

BRACKET GUIDE

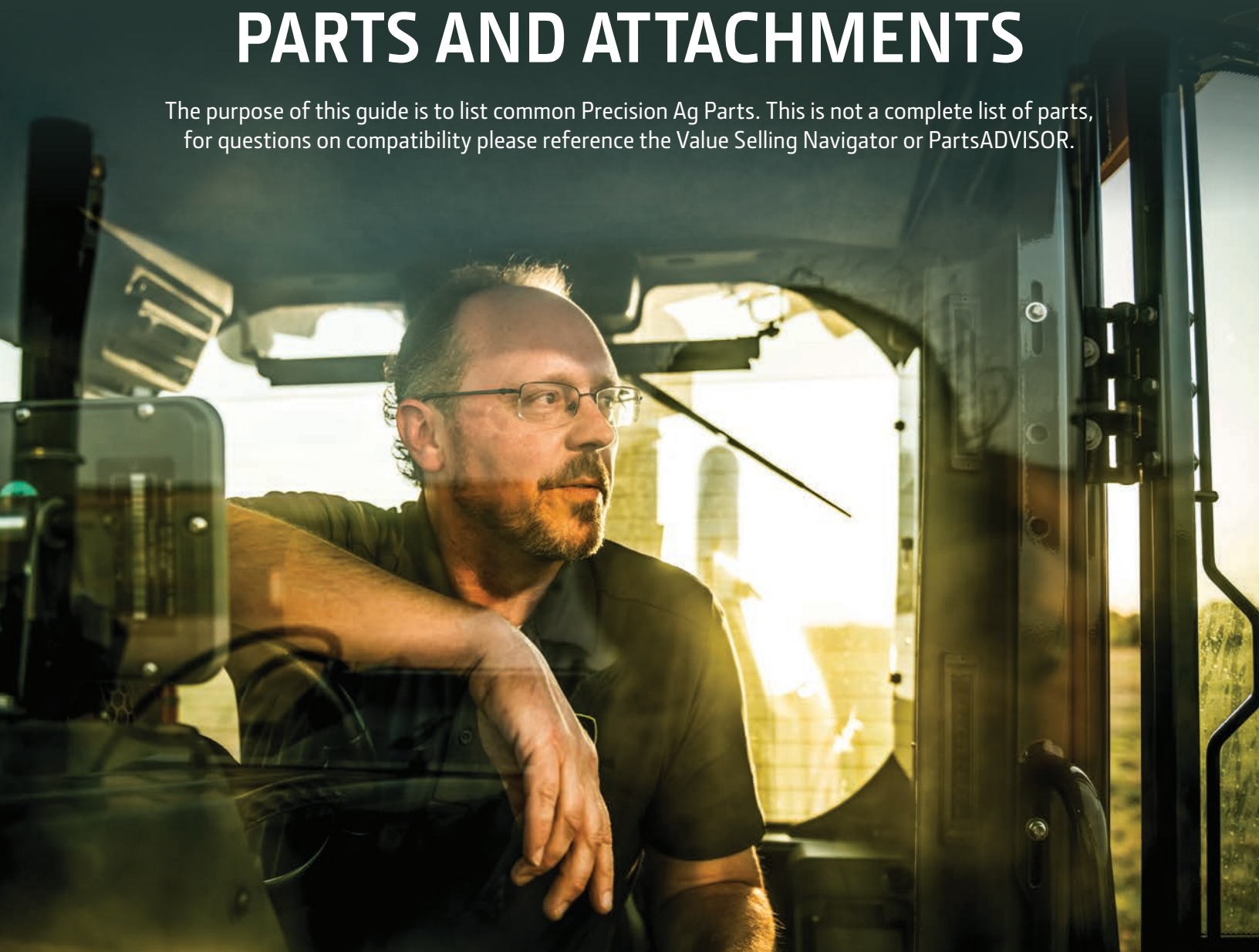
Common Components for Precision Ag



JOHN DEERE

COMMON PRECISION AG BRACKET PARTS AND ATTACHMENTS

The purpose of this guide is to list common Precision Ag Parts. This is not a complete list of parts, for questions on compatibility please reference the Value Selling Navigator or PartsADVISOR.



CONTENTS

GreenStar Display Brackets	3 – 5
Common Accessory Brackets.....	6 – 7
RAM Mounting Solutions.....	8 – 9
Receiver Mounting Brackets.....	10 – 13

GREENSTAR DISPLAY BRACKETS

EXTENDED MONITOR MOUNTING BRACKET

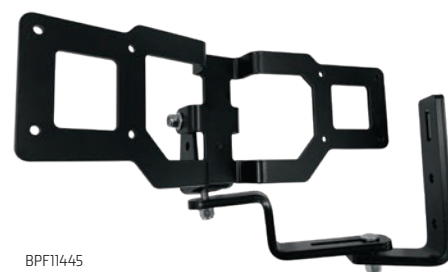
Extended monitor mounting bracket for dual screens.

Universal Extended Monitor Mounting Bracket

PART NUMBER: BPF11445

Compatibility

4240 Universal Display Mount, 4640 Universal Display



CORNERPOST BRACKET FOR G2/G3/ G4 DISPLAYS

Corner Post Display Bracket

PART NUMBER: BPF12124

Description

GreenStar display mounting bracket for original GreenStar display, GS2 and GS3 displays

Gen 4 and GreenStar Displays Bracket for Single Display -Tractor and Sprayer

GreenStar 2 1800, GreenStar 2 2100, GreenStar 2 2600, GreenStar 3 2630, and Gen 4 4640 Universal Display.

For complete machine compatibility details, refer to Value Selling Navigator. See BPF12124 for Gen 4 4240 display bracket.

Corner post display mounting bracket for GS2 / GS3 and Gen 4 displays (including 4240)

Replaces PF90385 and BPF11358

Compatibility

Tractors: 020, 7030, 7R, 8030, 8R, 9020, 9030, 9R Series

Sprayer: 4X20, 4X30 Series



Bracket Kits

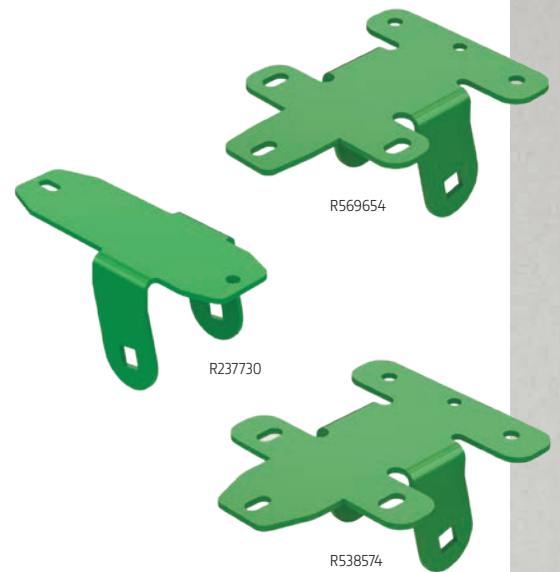
PART NUMBER: R237730, R538574, R569654

Description

Upgraded to work with Gen 4 Displays

Replaces part numbers PF90385 and BPF11358

- If a customer has PF90385, to install a Gen4 display order following brackets:
 - R538574 bracket is for 4640 only
 - R569654 bracket is for 4240 / 4640
 - Either of these will replace R237730 with existing hardware
 - Also obtain an additional (2) 19M7774 M6 screws
- If a customer has BPF11358, the only part that is needed to install a 4240 display is R569654



COMBINE DISPLAY BRACKETS

Cornerpost Display Bracket (GS2 and GS3)

PART NUMBER: BPF10277

Description

Greenstar Mounting Bracket for Combines and Windrowers

For use with GreenStar, Gen 4, GS2 and GS3 Displays.

Bracket allows for the display to be folded away for better visibility during road transport

For mounting either a Gen 4 4640 Universal Display, Gen 4 Extended Monitor, GreenStar 3 2630, or GreenStar 2 2600 in the cab. (bracket and hardware only).

Compatibility

Combines: S Series Combines, T Series, W Series (model year 2012 and newer)

Windrowers: W235, W260, W-Series (model year 2012 and newer), T-Series (model year 2012 and newer)



9060-9070 Series Combine Display Bracket

PART NUMBER: AXE16786

Description

GreenStar Display Corner post Bracket -S-Series Combines For mounting either a GreenStar 3 2630 or GreenStar 2 2600 Display in the cab.

To mount a Gen 4 Display, order adapter BPF11839

Compatibility

Combines: W Series (2007-2011) T Series (2007-2011), 60 series, 70 series

Cotton Pickers: 7700 and 7800 SPFH, 7660, CP690

Cotton Stripper: CS690

AXE16786



Display Mounting Adapter, Gen 4 Universal

PART NUMBER: BPF11839

Description

John Deere 4640 or 4240 Universal Display Mounting Adapter

Mounting hardware is included.

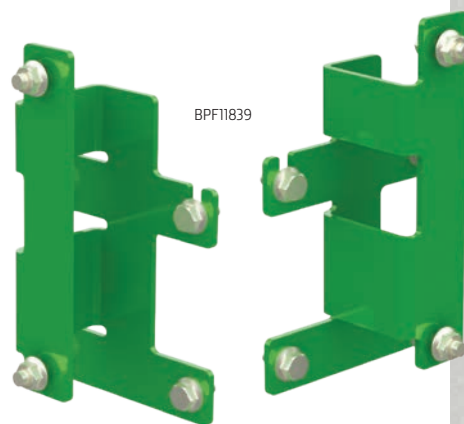
Compatibility

Combines: 70 Series

Cotton Pickers: CP690

Cotton Stripper: CS690

BPF11839



COMMON ACCESSORY BRACKETS

ACCESSORY BRACKETS

The brackets mount in the cab and are the mounting solution for a variety of displays, monitors, and universal mounts. The following accessory brackets include offerings for specific applications as well as universal RAM mounts.

Accessory Mounting Bracket Kit

PART NUMBER: RE343680

Description

Sized to attach directly to cabs equipped with 10mm threaded bosses



RE343680

Long Bar Bracket

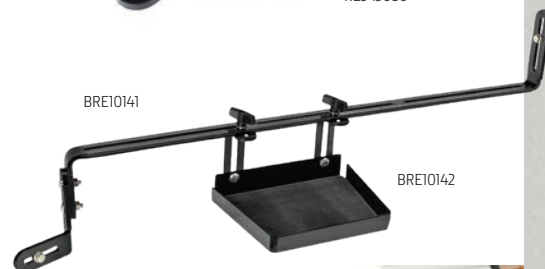
PART NUMBER: BRE10141

Tray Kit

PART NUMBER: BRE10142

Compatibility

Tractors: 7000, 7010, 7020, 7030, 8000, 8010, 8020, 8030, 9000, 9010, 9030 Series



BRE10141

BRE10142

Long Bar Bracket — R Series Tractors

PART NUMBER: RE317435

Compatibility

Tractors: 7R, 8R, 9R Series



RE317435



Guide Bar Mobile Mounting Bar, RH (MY2014 and Newer)

PART NUMBER (BRACKET): BXE10927

PART NUMBER (SLIDE MOUNT): BXE10480

Description

Sliding mounting clamps make fore/aft adjustment fast and simple

Compatibility

Combines: Model year 2014 and newer

Windrowers: W235 and W 260



Guide Bar, Mobile Mounting Bar, RH (MY2012 - MY2013)

PART NUMBER: BXE10481

Description

Developed specifically for John Deere combine cabs

Easy bolt-on installation

Horizontal and vertical mounting for ideal placement

Includes one (1) of BXE10480

Compatibility

Combines: Model year 2012 and 2013



6R Series Tractor Accessory Mount (w/o CommandArm)

PART NUMBER: BL15042

Corner Post Bracket –6M Tractors

PART NUMBER: BL15158

Compatibility

Tractors: 6R Series



Command Arm Bracket

PART NUMBER: BRE10147

Description

Command Arm bracket includes bracket and hardware only.

Compatibility

Tractors: 7R FT4 (S.N. 080001 -), 8RFT4 (S.N. 090001 -), 8RT FT4 (S.N. 912001 -)



RAM MOUNTING SOLUTIONS

RAM MOUNTING BRACKET KITS

Single Locking Suction Cup Mount

PART NUMBER: BXE10606

Description

Single suction mount securely holds 44-mm (1.75-in.) to 114-mm (4.5-in.) wide cell phones with adjustable spring-loaded rubber posts. Mounts to glass, painted surfaces, and gelcoat fiberglass. Requires smooth, non-porous, and flat or slightly curved surface



BXE10606



Dual Locking Suction Cup Mount

PART NUMBER: BXE10607

Description

Mounts to glass, painted surfaces, and gelcoat fiberglass. Requires smooth, non-porous, and flat or slightly curved surface

1.5" ball and socket holds heavier tablets steady and has adjustable positions

For tablet sizes up to 10" with access to all ports and buttons

Spring-loaded X-Grip cradle accommodates different sizes and has quick release levers for simple installation and removal



BXE10607

RAM Cell Phone Mount

PART NUMBER: BRE10015

Description

Fits to any 10mm threaded bosses and includes hardware to mount on any existing monitor bracket

Patented holder on the cell phone bracket fits most cell phones



BRE10015

RAM Tablet Mount

PART NUMBER: BRE10255

Description

Spring loaded cradle make a perfect fit for large tablets with or without a case

Includes two different size end cradles to fit multiple sizes of tablets.

Compatibility

Compatible with all tractor and combine brackets — BXE10477, BXE10481, RE343680, BRE10141



BRE10255

RAM Tablet Mount — X-Grip

PART NUMBER: BXE10479

Description

Spring loaded cradle make a perfect fit for large tablets

Expands and contracts to fit most 10-in. tablets with or without sleeves, as well as some smaller tablets with or without a case

Compatibility

Compatible with all tractor and combine brackets —
BXE10477, BXE10481, RE343680



BXE10479



PF11019

RAM display mount for GS2600 and GS2630 displays

PART NUMBER: PF11019

Compatibility

GS2600 and GS2630 displays

RAM display mount —GS4240 and GS4640 displays

PART NUMBER: UC17356

Compatibility

GS2600 and GS2630 displays



UC17356

RAM double socket arm

PART NUMBER: RE574454 or PF80459

Compatibility

Universal



RE574454

Universal clamp mount with RAM ball adapter

PART NUMBER: PF80460

Compatibility

Universal



PF80460

RAM ball adapter with 10mm threaded stud

PART NUMBER: RE576490

Compatibility

Universal



RE576490

RECEIVER MOUNTING BRACKETS

DELUXE SHROUD MOUNTING BRACKET KITS

Deluxe Shroud Conversion Bracket Kit

PART NUMBER: PF81190

Description

Required when converting from the Original Shroud to the Deluxe Shroud.

Deluxe Shroud not included, order separately.

Compatibility

Tractors: 5R, 6R, 7030, 7R, 8R, 9R Series

Combines: S Series, W Series and T Series



PF81190

Deluxe Shroud Conversion Bracket Kit

PART NUMBER: PF91009

Description

Required when converting from the Original

Shroud to the Deluxe Shroud.

Compatibility

Combines: 9010, 9050, 9060, and 9070 Series

Cotton Pickers: 7760, 9986, 9996 Series

Cotton Strippers: 7460 Series

Forage Harvesters: 7000 and 705 Series 0

Windrowers: 4890, 4990, 4895, and 4995 Series



PF91009



Deluxe Shroud Bracket Kit

PART NUMBER: PF91010

Description

Required when converting from the Original Shroud to the Deluxe Shroud.

Compatibility

Tractors: 7000–7030 Series, 8000–8030, Series and 9000–9030 Series

Sprayers: 4700, 4710, 4720–4920, and 4730–4930

PF91010



Deluxe Shroud Bracket

PART NUMBER: PF90780

Description

Required when converting from the Original Shroud to the Deluxe Shroud

Compatibility

Tractors: 6020 or 6030 Series or Small Frame 7000, 10, 20, or 30 Series

PF90780

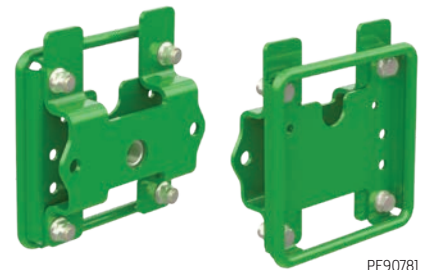


Deluxe Shroud Bracket

PART NUMBER: PF90781

Description

RTK Base Station and Tripod. Required when converting from the Original to the Deluxe Shroud.



PF90781

CAB ROOF MOUNTING BRACKET KITS

Cab Roof Mounting Bracket

PART NUMBER: RE559485

Compatibility

Tractors: R Series

Combines: S Series



RE559485



Cab Roof Mounting Bracket

PART NUMBER: AH211594

Compatibility

Combines: 9000, 9010, 9050, 9060, and 9070 Series

Cotton Picker: 7760

Cotton Stripper: 7460

SPFH: 7000 series 7050 Series



Cab Roof Mounting Bracket

PART NUMBER: RE175670

Compatibility

Tractors: 7000–7020, 8000–8020, and 9000–9020

Sprayers: 4710, 4720, and 4920



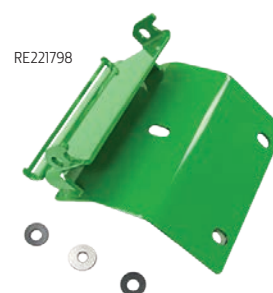
Cab Roof Mounting Bracket

PART NUMBER: RE221798

Compatibility

Tractors: 7630 –7930, 8130-8530

Sprayers: 4730, 4830, 4930, and 4940



Receiver Mounting Bracket

PART NUMBER: RE175036

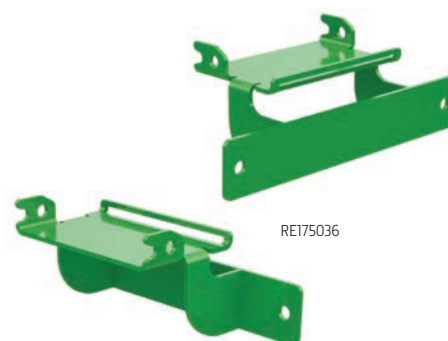
Description

RTK Base Station / Universal

Compatibility

Sprayers: 6700, 4730 and 4830

Universal applications



MISCELLANEOUS RECEIVER BRACKET KITS

StarFire6000 Locking Bracket Kit

PART NUMBER: BPF11074

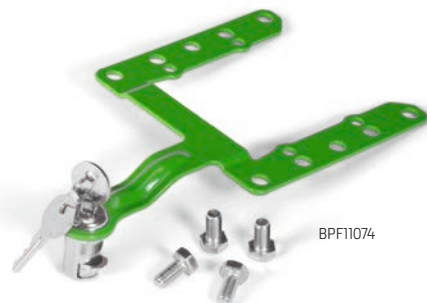
Description

Includes locking bracket and two keys used to secure a StarFire6000 Receiver to a machine or implement.

Compatibility

Tractors: 7R, 8R, 9R Series

Sprayers: R Series



StarFireReceiver Universal Mounting Bar Kit

PART NUMBER: BPF11356

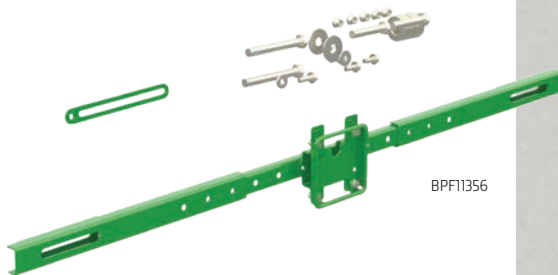
Description

Adjustable position receiver mounting bar for use with Deluxe Shroud in universal applications.

If not using the Deluxe Shroud, also order RE175036

Compatibility

Universal



Deluxe Receiver Shroud

PART NUMBER: PF90739 or PFA10072

Compatibility

Universal



900 mhz Rubber Antenna

PART NUMBER: PF81301

Compatibility

Universal

PF81301



Plastic Shroud for Radio that mounts on back of receiver

PART NUMBER: PF90740

Compatibility

Universal





JOHN DEERE

This literature has been compiled for worldwide circulation. While general information, pictures and descriptions are provided, some illustrations and text may include finance, credit, insurance, product options and accessories NOT AVAILABLE in all regions. PLEASE CONTACT YOUR LOCAL DEALER OR DISTRIBUTOR, AS APPLICABLE, FOR DETAILS. John Deere reserves the right to change specification, design and price of the products described in this literature without notice. John Deere's green and yellow color schemes, the leaping deer symbol, and JOHN DEERE are trademarks of Deere & Company.