

Bracket Guide

Bracket Guide –Common Components for Precision Ag
March 2020



Common Precision Ag Bracket Parts and Attachments

The purpose of this guide is to list common Precision Ag Parts. This is not a complete list of parts, for questions on compatibility please reference the Value Selling Navigator or PartsADVISOR.

CONTENT

GreenStar Display Brackets

Common Accessory Brackets

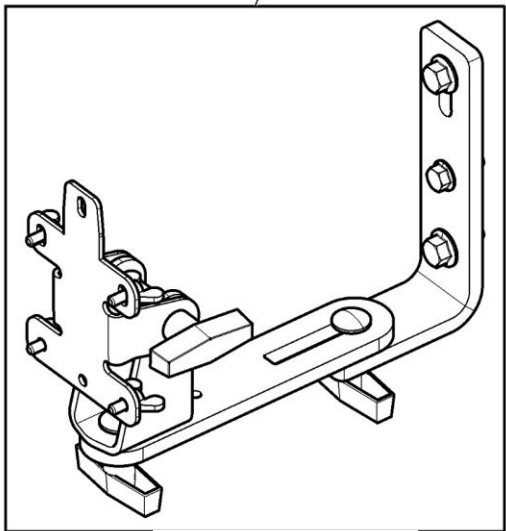
RAM Mounting Solutions

Receiver Mounting Brackets

CORNERPOST BRACKET FOR G2/G3 DISPLAY



PF90385

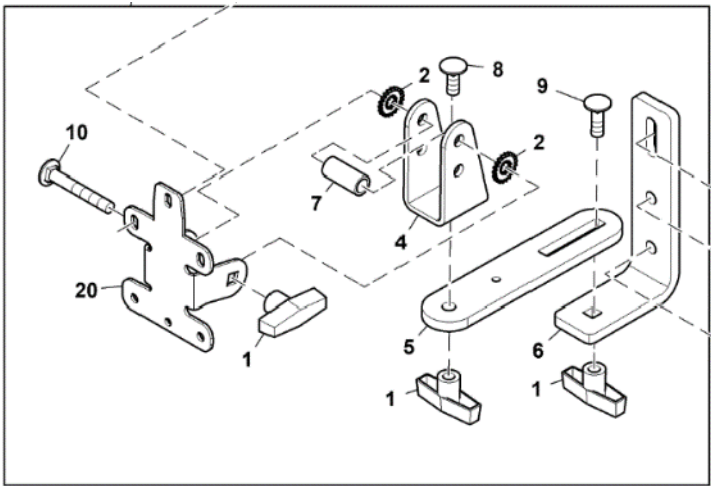


BPF11358

Description	Part Number
Corner Post Display Bracket	PF90385
<ul style="list-style-type: none">- GreenStar display mounting bracket for original GreenStar display, GS2 and GS3 displays <i>(part ended dated, subs to BP12124)</i>	
Series Models	
7020, 7030, 7R, 8030, 8R, 9020, 9030, 9R Series Tractors 4X20, 4X30 Series Sprayers	

Description	Part Number
Corner Post Display Bracket	BPF11358
<ul style="list-style-type: none">- Gen 4 and GreenStar Displays Bracket for Single Display - Tractor and Sprayer- GreenStar 2 1800, GreenStar 2 2100, GreenStar 2 2600, GreenStar 3 2630, and Gen 4 4640 Universal Display. For complete machine compatibility details, refer to Value Selling Navigator. See BPF12124 for Gen 4 4240 display bracket. <i>(Part end dated, subs to BP12124)</i>	
Series Models	
Multiple applications – cab corner post.	

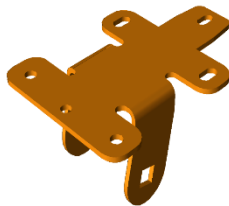
CORNERPOST BRACKET FOR G2/G3/ G4 Displays



BPF12124

Description		Part Number
Corner Post Display Bracket – NEWEST VERSION		BPF12124
Corner post display mounting bracket for GS2 / GS3 and Gen 4 displays (including 4240) (replaces PF90385 and BPF11358)		
Series	Models	
Multiple Applications		

R237730



R538574
Or
R569654

Upgrade bracket kits PF90385 or BPF11358 to work with Gen 4 Displays	
If a customer has PF90385, to install a Gen4 display order following brackets	
<ul style="list-style-type: none">• R538574 bracket is for 4640 only• R569654 bracket is for 4240 / 4640• Either of these will replace R237730 with existing hardware• Also obtain an additional (2) 19M7774 M6 screws	
If a customer has BPF11358, to install a 4240 display	
<ul style="list-style-type: none">• R569654 is the only part that is needed	

Combine Display Brackets



BPF10277

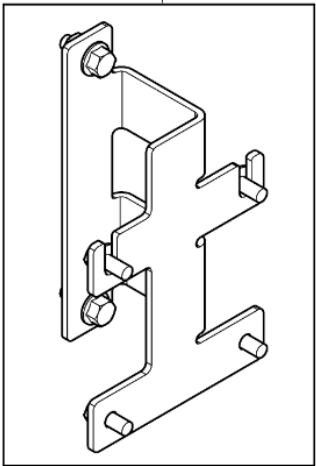


BPF11186

Description	Part Number
Cornerpost Display Bracket (GS2 and GS3)	BPF10277
<p>Greenstar Mounting Bracket for S Series and T Series Combines and W series Windrowers For use with GS2 and GS3 Displays.</p> <p>Bracket allows for the display to be folded away for better visibility during road transport</p>	
Series Models	
S Series Combines, T Series Combines, W235 and W260 Windrowers	

Description	Part Number
GreenStar and Gen 4 Corner post Bracket - S, W and T-Series Combines	BPF11186
<p>For mounting either a Gen 4 4640 Universal Display, Gen 4 Extended Monitor, GreenStar 3 2630, or GreenStar 2 2600 in the cab. (bracket and hardware only).</p> <p><i>For link to 4640 application chart, including bracket and power harness, click here.</i></p>	
Series Models	
W-Series (model year 2012 and newer), T-Series (model year 2012 and newer), S600 Series (model year 2017 and older), S700 Series Combines	

Combine Display Brackets



AXE16786

Description	Part Number
9060-9070 Series Combine Display Bracket	AXE16786
<ul style="list-style-type: none">- GreenStar Display Corner post Bracket - S-Series Combines For mounting either a GreenStar 3 2630 or GreenStar 2 2600 Display in the cab.- To mount a Gen 4 Display, order adapter BPF11839	
Series Models	
W Series Combines (2007-2011) T Series Combines (2007-2011), 60 series, 70 series Combines, 7700 and 7800 SPFH, 7660, CP690 Cotton Pickers, CS690 Cotton Stripper	

Description	Part Number
Display Mounting Adapter, Gen 4 Universal	BPF11839
<ul style="list-style-type: none">-John Deere 4640 or 4240 Universal Display Mounting Adapter-Mounting hardware is included.	
Series Models	
70 Series combines, CS690 Cotton Stripper, CP690 Cotton Picker	

Common Accessory Brackets

Accessory Brackets

The brackets mount in the cab and are the mounting solution for a variety of displays, monitors, and universal mounts. The following accessory brackets include offerings for specific applications as well as universal RAM mounts.



RE343680

Description	Part Number
Accessory Mounting Bracket Kit	RE343680
Sized to attach directly to cabs equipped with 10mm threaded bosses	

Accessory Mounting Bracket



BRE10141 Bracket only



BRE10142 Tray Kit

Description		Part Number
Long Bar Bracket Tray Kit		BRE10141 BRE10142
Series	Models	
	7000, 7010, 7020, 7030, 8000, 8010, 8020, 8030, 9000, 9010, 9030 Series Tractors	



RE317435

Description		Part Number
Long Bar Bracket – R Series Tractors		RE317435
Series	Models	
	7R, 8R, 9R Series Tractors	

Accessory Mounting Bracket – Harvester Cabs



BXE10477 Bracket



BXE10480 Slide Mount

Description	Part Number
Guide Bar, Mobile Mounting Bar, RH (MY2014 and Newer)	BXE10477
Sliding mounting clamps make fore/aft adjustment fast and simple Fits model year 2014 and new combines Fits W235 and W 260 Windrowers	



BXE10481 (Bracket only)

Description	Part Number
Guide Bar, Mobile Mounting Bar, RH (MY2012 - MY2013)	BXE10481
<ul style="list-style-type: none">Developed specifically for John Deere combine cabsEasy bolt-on installationHorizontal and vertical mounting for ideal placementIncludes one (1) of BXE10480Fits model year 2012 and 2013 combine cabs	

Accessory Mounting Bracket



BL15042



BL15158

Description	Part Number
6R Series Tractor Accessory Mount (w/o CommandArm)	BL15042
Corner Post Bracket – 6M Tractors	BL15158



BRE10147

Description	Part Number
Command Arm Bracket Note: CommandARM bracket includes bracket and hardware only.	BRE10147
Series Models	
Fits 7R FT4 (S.N. 080001 -), 8RFT4 (S.N. 090001 -), 8RT FT4 (S.N. 912001 -) Tractors	

RAM Mounting Bracket Kits



BXE10606



Description	Part Number
Single Locking Suction Cup Mount	BXE10606
Single suction mount securely holds 44-mm (1.75-in.) to 114-mm (4.5-in.) wide cell phones with adjustable spring-loaded rubber posts. Mounts to glass, painted surfaces, and gelcoat fiberglass. Requires smooth, non-porous, and flat or slightly curved surface	



BXE10607



Description	Part Number
Dual Locking Suction Cup Mount	BXE10607
Mounts to glass, painted surfaces, and gelcoat fiberglass. Requires smooth, non-porous, and flat or slightly curved surface <ul style="list-style-type: none">• 1.5" ball and socket holds heavier tablets steady and has adjustable positions• For tablet sizes up to 10" with access to all ports and buttons• Spring-loaded X-Grip cradle accommodates different sizes and has quick release levers for simple installation and removal	

RAM Mounting Bracket Kits



Description

Part Number

RAM Cell Phone Mount

BRE10015

Fits to any 10mm threaded bosses and includes hardware to mount on any existing monitor bracket

- Patented holder on the cell phone bracket fits most cell phones



Description

Part Number

RAM Tablet Mount

BRE10255

Compatible with all tractor and combine brackets (BXE10477, BXE10481, RE343680, BRE10141)

- Spring loaded cradle make a perfect fit for large tablets with or without a case
- Includes two different size end cradles to fit multiple sizes of tablets.



Description

Part Number

RAM Tablet Mount – X- Grip

BXE10479

Compatible with all tractor and combine brackets (BXE10477, BXE10481, RE343680, BRE10141)

- Spring loaded cradle make a perfect fit for large tablets with or without a case
- Expands and contracts to fit most 10-in. tablets with or without sleeves, as well as some smaller tablets



PF91109



UC17356



RE574454
PF80459



PF80460



RE576490

Description	Part Number
RAM display mount– GS2600 and GS2630 displays	PF91109
RAM display mount – GS4240 and GS4640 displays	UC17356
RAM double socket arm	RE574454 or PF80459
Universal clamp mount with RAM ball adapter	PF80460
RAM ball adapter with 10mm threaded stud	RE576490

Deluxe Shroud Mounting Bracket Kits



Description	Part Number
Deluxe Shroud Conversion Bracket Kit Required when converting from the Original Shroud to the Deluxe Shroud. Deluxe Shroud not included, order separately.	PF81190
Series Models	
Fits 5R, 6R, 7030, 7R, 8R, 9R series tractors, S Series, W Series and T Series Combines, 7000, 8000 and 9000 series SPFH, R series Sprayers	



Description	Part Number
Deluxe Shroud Conversion Bracket Kit Required when converting from the Original Shroud to the Deluxe Shroud.	PF91009
Series Models	
Fits 9010, 9050, 9060, 9070 Series Combines; 7760, 9986 or 9996 Cotton Pickers, 7460 Cotton Strippers, 7000 and 7050 Series Forage Harvesters, 4890, 4990, 4895, 4995 Windrowers	



Description	Part Number
Deluxe Shroud Bracket Kit Required when converting from the Original Shroud to the Deluxe Shroud.	PF91010
Series Models	
- Fits 7000 to 7030 Series, 8000-8030, series and 9000 to 9030 series tractors, 4700, 4710, 4720-4920, 4730-4930 sprayers	



Description	Part Number
Deluxe Shroud Bracket Required when converting from the Original Shroud to the Deluxe Shroud	PF90780
Series Models	
Fits 6020 or 6030 Series or Small Frame 7000, 10, 20, or 30 Series Tractors	

Description	Part Number
Deluxe Shroud Bracket RTK Base Station and Tripod. Required when converting from the Original to the Deluxe Shroud.	PF90781

Cab Roof Mounting Bracket Kits



Description	Part Number
Cab Roof Mounting Bracket	RE559485
Series Models	
S Series Combines and R series tractors	



Description	Part Number
Cab Roof Mounting Bracket	AH211594
Series Models	
9000, 9010, 9050, 9060, 9070 Series Combines, 7760 Cotton Picker, 7460 Cotton Stripper, 7000 series 7050 series SPFH,	



Description	Part Number
Cab Roof Mounting Bracket	RE175670
Series Models	
7000-7020, 8000-8020, 9000-9020 tractors, 4710, 4720, 4920 sprayers	

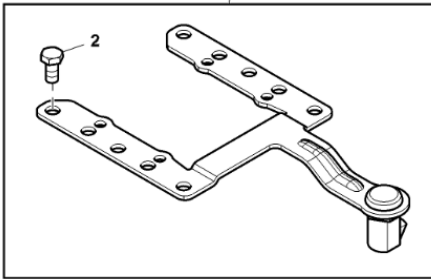


Description	Part Number
Cab Roof Mounting Bracket	RE221798
Series Models	
7630 – 7930, 8130-8530 Tractors, 4730, 4830, 4930, 4940 Sprayers	

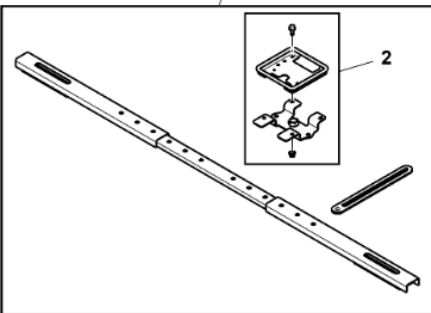


Description	Part Number
Receiver Mounting Bracket RTK Base Station / Universal	RE175036
Series Models	
6700, 4730 and 4830 Sprayers and universal applicaitons	

Misc. Receiver Bracket Kits



Description	Part Number
StarFire 6000 Locking Bracket Kit Includes locking bracket and two keys used to secure a StarFire 6000 Receiver to a machine or implement.	BPF11074
Series Models	
7R, 8R, 9R Series tractors, R Series Sprayers	



Description	Part Number
StarFire Receiver Universal Mounting Bar Kit	BPF11356
Adjustable position receiver mounting bar for use with Deluxe Shroud in universal applications. If not using the Deluxe Shroud, also order RE175036.	



Description	Part Number
Deluxe Receiver Shroud	PF90739 or PFA10072



Description	Part Number
900 mhz Rubber Antenna	PF81301

Description	Part Number
Plastic Shroud for Radio that mounts on back of receiver	PF90740