

# GATOR™

CROSSOVER UTILITY VEHICLES  
XUV SERIES



LIVE FOR WHAT YOU DO.  
**GO GATOR.**





# TOUGH AND TOUGHER

What you do matters. How you do it matters more. As sure as real work requires breaking a sweat, Gator™ Utility Vehicles are engineered to work as tough and play as hard as you do. We've got the lineup to prove it. Choose between:

Full-Size XUVs. We're the big boys, engineered for serious payloads with powerful engines. Check out page 10 for the dirt.

Mid-Size XUVs. You'll get true grit at a great price as well as exceptional comfort and performance. See what they can do on page 23.

Page after page, discover common sense innovations in our products that make what you live for come easy.

Then come see what Gator owners live for at [JohnDeere.com/Gator](http://JohnDeere.com/Gator).

Go Rugged. Go Big. Go Gator.



FULL  
SIZE

XUV825i S4

What's inside:

**Full-Size**

Engine	4-5
Real World Testing	6-7
High Performance	8-9
825i / 825i S4	10-11
825i S4 / 855D S4	12-13
Features / Attachments	14-17
825i / 825i S4 Specs	18-19
625i Specs	20
855D / 855D S4 Specs	21

**Mid-Size**

Introduction	22-23
550 / 550 S4	24-25
Features / Attachments	26-29
550 / 550 S4 Specs	30-31

MID  
SIZE

XUV550

XUV550 S4

MID  
SIZE



**FULL  
SIZE**

**50 hp' motor  
812cc displacement**

Serious muscle with enough power and torque to spare.

**Proven automotive strength**

Features durable, cast iron engine block with an all-aluminium head as well as automotive quality crank and thrust bearings. These heavy-duty components ensure that this engine lasts longer than lighter-weight sport engines typical in this class of vehicle.

**Patented vari-throttle**

Responds like a car. Lightly press the pedal, and the vehicle eases forward. Floor it, and the vehicle gives you its all. A first in the UTV market.

**Dual Overhead Cams (DOHC)**

Increase airflow to the cylinders and boost engine potential and performance in every situation.

**3 cylinders**

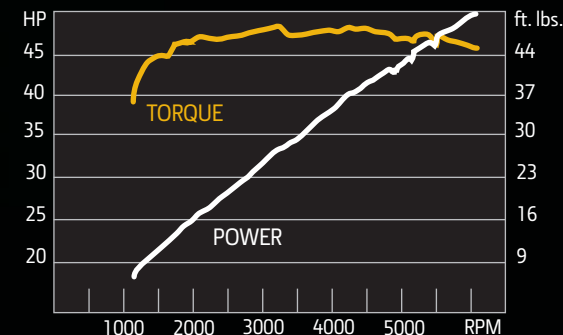
More cylinders guarantee consistent and smooth power at all RPM levels without the gaps between cycles found in gas engines with fewer cylinders.

**12 valves**

Four valves per cylinder (instead of just two) increase the flow of intake and exhaust gases, enhancing combustion efficiency and power.

**Torque through the power band**

Whether it's the low end or the top end, there's no shortage of torque.



**JOHN DEERE**  
DOHC 12 Valve - Inline 3 Cyl

**Massive 75 amp alternator generates 1012 watts**

The industry's highest electrical power generation by far. You'll have plenty of juice for every accessory you can imagine, from rally lights to a monster winch.

**Fully isolated**

Massive rubber mounts absorb shocks to give you a vibration free ride.



Power? Check.

You're looking at the most advanced engine available in a UTV. Featuring a breakthrough 50 hp\* with three cylinders, 12 valves, Dual Overhead Cams (for breathtaking aspiration) — plus a massive 75-amp alternator to power every accessory. Makes other UTV engines look ordinary.

Brute power isn't the whole story. A patented vari-throttle improves everything from low-speed creeping to the response needed to take on a rock-and-roll trail. EFI self-corrects for altitude, so it runs as smooth at base camp as it will on the summit.

In short, this is the engine that knows it can.



**855D Engine**

Diesel that delivers. 854cc's generate 22.8 hp\*, giving you the durability and confidence you'd expect from a John Deere.



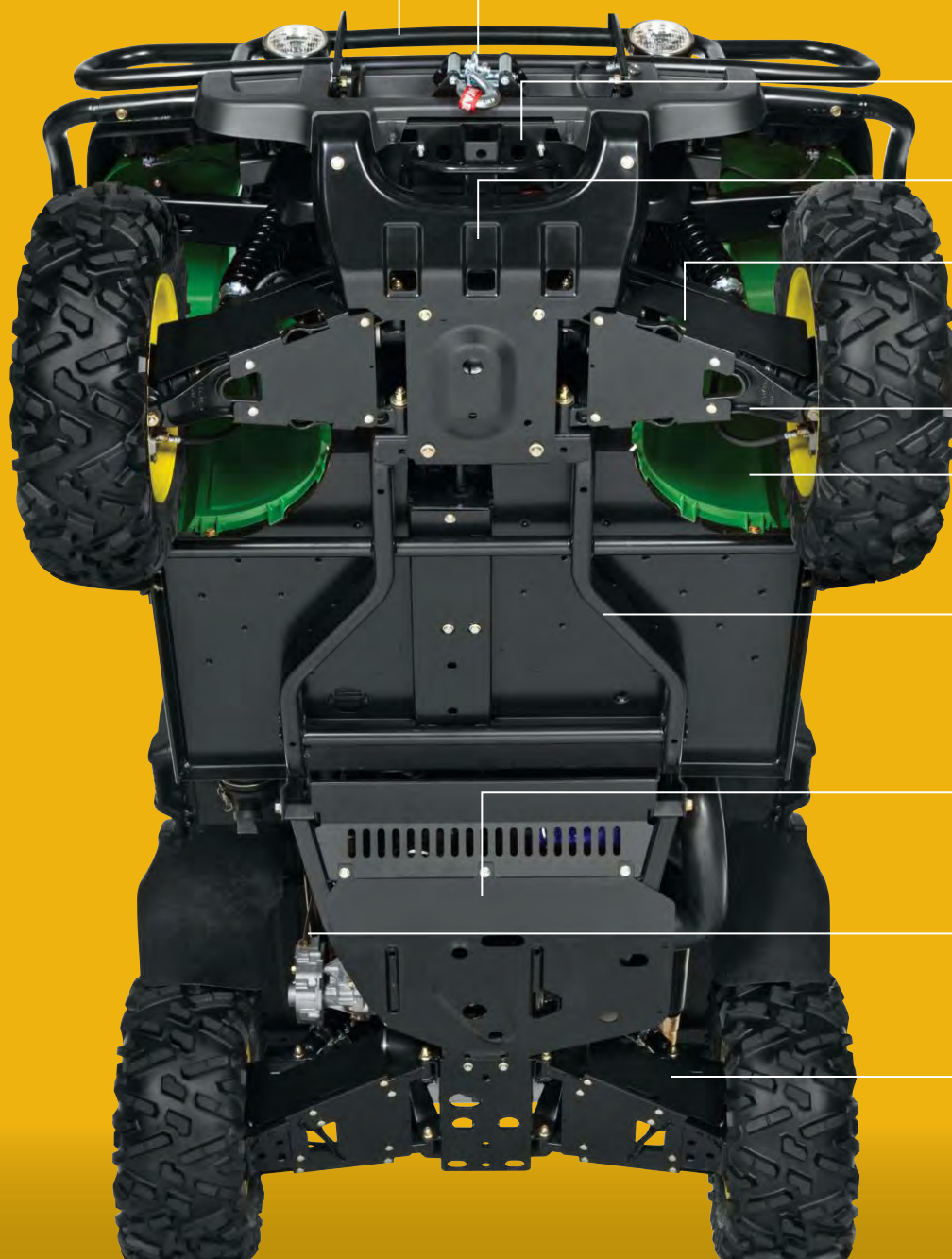
**625i Engine**

Smart power. 22.5 hp\* with a power management feature that increases horsepower when you need it, under load.

**GO POWERFUL.**



FULL  
SIZE



**Powder coat electrostatic paint**

Automotive-quality electrostatic paint fights corrosion by covering components more completely, providing a longer lasting, tougher finish.

**Integrated winch mount**

**2" front and rear receivers with integrated ridged steel tow hooks**

**Engineered tooled steel chin guard**

**Cast-Iron A-Arms**

Engineered ductile front cast-iron A-Arms balance strength and weight and are designed to withstand jackhammer trails.

**Automotive-tolerance ball joints**

**JD Loy plastic**

Advanced, paintable JD polymers on the XUV are much more scratch-, impact- and UV-resistant than standard polymers.

**Hydroformed frame**

Hydroformed steel frame allows for fewer welded and bolted joints providing superior durability and exceptional tolerance for twisting under heavy loads.

**Full-steel skid plates, not plastic.**

Mother Nature fights dirty. That's why Gator XUVs are equipped with 9-gauge steel underbody protection, not the plastic you'll find underneath other UTVs.

**Tough clutch belts**

Our double-cogged, high-wear-resistance belts are designed to wear slowly and virtually eliminate catastrophic tears.

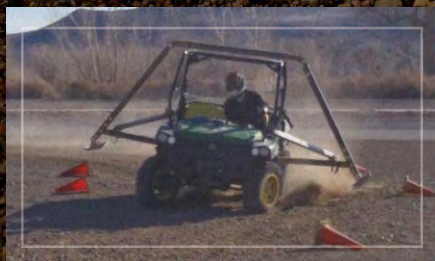
**High-strength steel stamping in rear carrier**

Underneath that largest cargo box in its class, you'll find an equally impressive foundation of carefully engineered steel mounts for the suspension.



# GO TOUGH.

It's not about tweaking specs so they look good on paper. It's about getting your hands dirty and your knuckles scraped out on real proving grounds—to make sure in advance that reality doesn't twist your engineering design into a pretzel. Only this level of punishing evaluation can guarantee that a vehicle can really perform like you expect, day in and day out.



These XUVs survived over 20,000 hours of blistering real-world testing in one of the harshest environments in the United States.





FULL  
SIZE

# GO FOR IT.

To attack any trail, you've got to have four things: A smooth ride that impresses you every time you turn the key. A seriously capable suspension. Brakes that keep you in control. And rock-solid stability (with and without a load in the back). These Full-Size XUVs have all four. Each model offers excellent stability thanks to a wide-

stance, low center of gravity and long wheelbase as well as one of the highest calculated Static Stability Factors in the industry. Plus, some XUVs feature dynamic engine braking\*, which keeps you in control when going downhill. Making the world your confidence course.

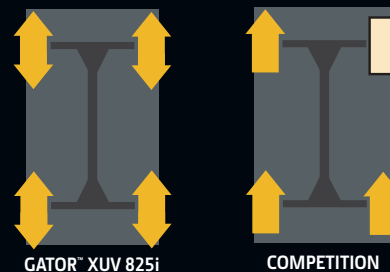


## Stable cornering

An unequal-length double wishbone suspension helps maintain excellent cornering force, but is designed to maintain control in challenging situations. Extensive skid-pad testing verified predictable handling with and without a fully loaded cargo box.

## Tires for any terrain

Pick from 27" Maxxis<sup>2</sup> BigHorn 2.0 Radials for best ride quality and durability, standard 26" Ancla XTs with stiff side walls and deep lugs, or 25" Terra Hawk ATs for excellent handling and low turf impact.



## True on-demand 4WD

Switch between turf friendly traction mode to a locked rear diff to On-Demand True 4WD for maximum traction for the most challenging terrain. (In this mode, an electronic interlock engages to prevent all power from being transferred to a wheel that has lost all traction.)

## Dynamic engine braking\*

The CVT belt stays engaged when cresting and descending a hill, offering dynamic resistance and ultimate control.

## OPS

Occupant Protection System with multiple passenger side handholds and 3-point seat belts is SAE, ANSI, and OSHA ROPS certified.<sup>4</sup> Includes ANSI certified occupant side retention nets (standard) or available half doors.

## Custom-engineered shocks

Long-travel suspension includes custom-engineered twin-tube shocks extensively modified and tested to ensure exceptional durability and a superior ride with max or no cargo.

## Independent double-wishbone suspension

Impressive front and rear suspension travel (8-in. in front and 9-in. to rear) provides great comfort when traversing rocks, stumps and whoa-nellies.

## High ground clearance

11 inches of ground clearance prevent the Full-Size XUV from getting high-centered even on extremely uneven terrain.

## Spring preload adjustment

Suspension can be easily adjusted for varying payloads.

## Automotive-style braking

Massive twin piston 8.25" hydraulic disc brakes bring you to a stop, pronto. And a 66% front brake bias helps prevent the rear axle from locking up during sudden stops, so you maintain control.

\*Available on 825i and 855D models only.

<sup>4</sup>Society of Automotive Engineers, American National Standards Institute, U.S. Occupational Safety and Health Administration rollover protection certified.

<sup>2</sup>MAXXIS is a third-party trademark used with permission.







FULL  
SIZE

TWO  
OR  
FOUR



## The XUV825i and the XUV855D.

Bring it. The 44 MPH, 50 HP EFI gas-powered 825i and 32 MPH 22.8 HP Diesel powered 855D Crossover Utility Vehicles are engineered to get things done, fast. Will seat a two-man team comfortably. Pulls through with a 3/4 ton towing capacity and is available with power steering (optional). Other two-seaters include the 625i.



An advanced digital dash Standard on every Full-Size XUV. Monitors fuel level, speed (mph or km/h), RPM\* and coolant temperature\*. Plus, includes a clock, trip and lifetime odometer, 4WD indicator and hour meter.

\*Only available on 825i and 855D.



## The XUV825i S4 and the XUV855D S4.

The off-road just got roomier. We've doubled your passenger space with room for four. Take control of any trail with standard power steering. Choose between the 44 MPH, 50 HP<sup>†</sup> EFI gas powered 825i S4, our fastest, most powerful four-seater, or the 32 MPH, 22.8 HP<sup>†</sup> diesel powered 855D S4.



**CVT intake**  
The CVT Intake system was designed for water fording, to lower belt temperatures and improve durability.



**Occupant Side Retention**  
Choose from ANSI certified OSR nets (standard) or available stylish half doors. Both offer easy single handed open and closing.



**Dynamic engine braking**  
Go downhill and be in control. It's easy with our dynamic engine braking system. Available on 825i and 855D models.



FULL  
SIZE



825i S4

Our fastest 4-seater.



# 855D S4

4 seats and diesel power.

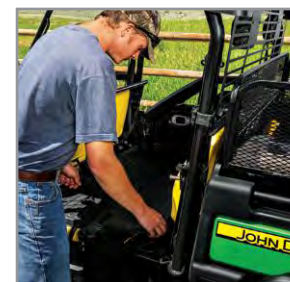


Now you can hunt in a pack. The 44 MPH 825i S4, our fastest 4-seater, and the 32 MPH Diesel 855D S4 make it easy. At work or play, these Full-Size XUVs have power, speed and payload capacity to spare. In fact, the back seat flips down into a convertible cargo rack with 200 lb. (91 kg) of extra cargo capacity, no problem. Plus, there's even more storage under the rear seat to stow tools, goggles and gear, so you will always be ready for whatever awaits you.



## Power Steering

Our power steering is engineered with an anti-kickback system for easy, car-like turns and greater control. And it's standard on our Full-Size XUV S4's.



## Convertible rear seat cargo rack

The rear seat folds in seconds without tools to become a 200 lb. (91 kg) capacity rack for more cargo.



## Under seat storage

Not only can you seat four, but the back seat lifts up and provides storage for all of your extra gear.



**FULL  
SIZE**

Get things done, fast. Every Full-Size XUV offers 1,500 pounds of towing and 1,400 pounds of payload capacity, plus is equipped with a cargo box that's the biggest in its class. Controls are smartly placed to maximize efficiency. You can add a power lift, a winch, and much

more. Plus our unique Quick Clamp system lets you install attachments without using a single tool. These rigs will get the heavy lifting done, leaving you with time to do what you really enjoy.



**Standard gas assist or automatic power lift**

A standard gas assist shock makes lifting and dumping effortless. Add an optional power lift kit and conveniently raise and lower bed with a press of a button.



**Flat-bed mode**

Composite cargo box sides can be removed in minutes to convert to a flat-bed— perfect for carrying large, awkward loads.

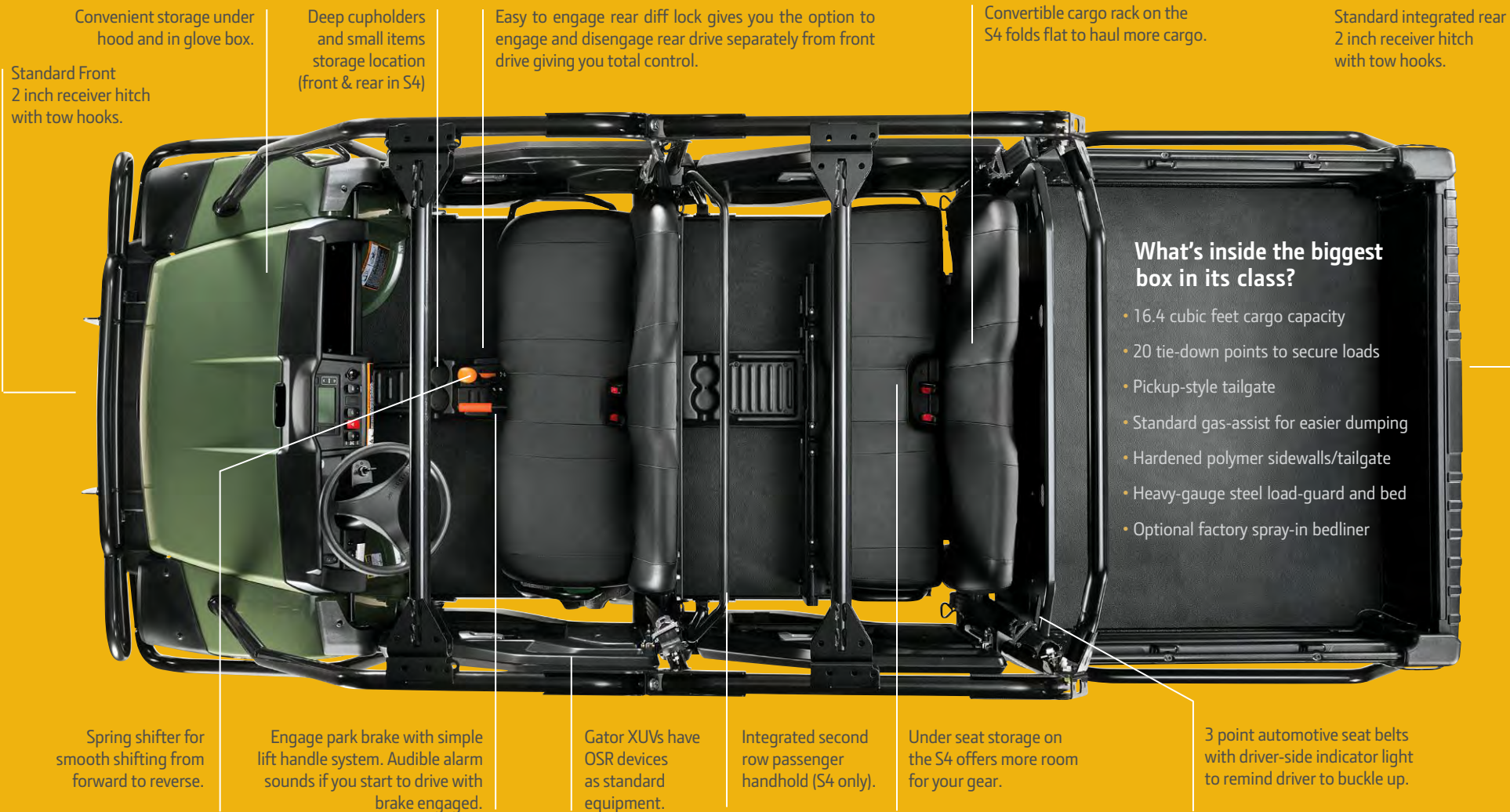


**1,000 lb. (453 kg) cargo capacity;  
1,400 lb. (635 kg) payload;  
1,500 lb. (680 kg) towing**

**The truth about towing capacity.**

Even though our XUVs feature powerful engines and advanced braking systems, we recommend that you not tow more than the weight of your Gator. Of note, other manufacturers follow different guidelines when calculating recommended towing capacities.





**Integrated cargo management**  
Quick-Clamp attaching system adds attachments like tool racks, divider walls and fuel containers to the cargo box in seconds. No tools needed. Clamps attach to rails, offering positioning flexibility.



**Balanced performance**  
With a full load in the box, you won't get a "seesaw" effect that lifts the front end and makes it hard to steer. The XUV keeps the front tires where they belong.



**Keep stuff close at hand**  
Handy center console storage includes 12-volt DC outlet, map pocket and pen holder. Bucket seat models only.



FULL  
SIZE

## FACTORY-INSTALLED PACKAGES



# GO ALL OUT.

These Factory Installed Packages make it easy to outfit your Gator.™

### XUV825i S4 and XUV855D S4 Utility and Protection Package:

#### Power and Protection

- Power Lift • Heavy Duty Front Brush Guard
- Heavy Duty Front Fender Guard
- Front and Rear Floor Mats

#### Rear Protection

- Rear Bumper • Bed Mat
- Cargo Box Heavy-duty Fender Guard

#### Also included,

- Alloy Wheels with Maxxis Bighorn 2.0 Tires
- OPS Poly Roof, Black
- Spray-on Bedliner
- Tail & Reverse Lights
- Taillight Protectors

### XUV625i, XUV825i and XUV855D Packages:

#### 1. Power and Front Protection

- Power Lift
- Heavy Duty Front Brush Guard
- Heavy Duty Front Fender Guard
- Floor Mats

*Package Priced at 10% discount.*

#### 2. Rear Protection

- Rear Bumper
  - Bed Mat
  - Cargo Box Heavy Duty Fender Guards
- Package Priced at 10% discount.*

## FACTORY-INSTALLED OPTIONS

### Colors



Green & Yellow (G&Y)

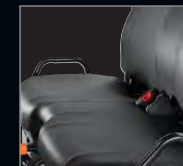


Olive & Black (O&B)\*



Camo  
REALTREE HARDWOODS  
HD® Pattern

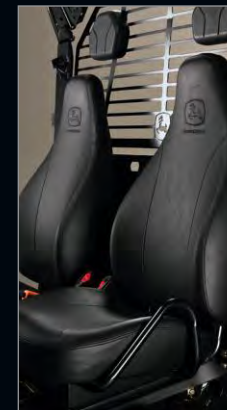
### Seats



Black bench seat  
O&B Camo



Yellow bench seat  
G&Y



Black John Deere branded  
high-performance  
sport seat\*  
G&Y O&B Camo



Yellow high-back  
21-in. bucket seat\*  
G&Y



Black high-back  
21-in. bucket seat\*  
O&B Camo

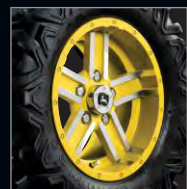
### Alloy Wheels



14" Matte Black  
O&B Camo



14" Silver  
O&B Camo



14" Yellow  
G&Y

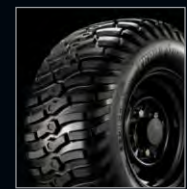
### Tires



Maxxis BigHorn 2.0  
Radials for extreme  
terrain (alloy wheels only)  
Front 27x9xR14  
Rear 27x11-R14



Ancla XTs for good  
mudding/extreme  
terrain  
Front 26x9xR12  
Rear 26x11-R12



Terra Hawk AT® tires for  
excellent handling and  
low impact on turf.  
Front 25x9-R12  
Rear 25x11-R12

\*Not available on S4 models



## FACTORY-INSTALLED OPTIONS

Want great weather protection and visibility?

Upgrade to a factory-installed Deluxe Cab Frame, with glass front and rear windshields and an electric console. Add heavy-duty automotive-glass doors for simply one of the finest cabs available anywhere. Cab is certified to SAE, ANSI, and OSHA standards for rollover and falling object protection.



Availability of Options and Attachments varies—  
See dealer for details.



**Rear screen**  
Provides additional protection to the rear. Includes attractive headrests.



**Heavy Duty Front Brush Guard**  
Protect the front end from anything that might get in your way.



**Occupant Side Retention**  
ANSI certified half doors match the color of your Gator.



**Front rack**  
Generously sized rack (48" long, 13.5" wide by 3.5" deep) will carry up to 100 lb. (45 kg) of gear.



**OPS Poly Roof**  
All-year-round weather protection. Includes molded-in water troughs. Black (shown) or Camo\*.



**Spray on bedliner**  
Protects just like a pickup truck's bedliner.

## SELECT ATTACHMENTS

See [JohnDeere.com/Gator](http://JohnDeere.com/Gator) or  
[JohnDeere.ca/Gator](http://JohnDeere.ca/Gator) for the full list.

### Mid-Range Light Kit (2 per)

Halogen lights mount on front or rear (shown.)

### Hella<sup>®1</sup> Performance Spot Lights

Halogen lights (two) produce a great short-range pattern (shown).

### Warn<sup>®</sup> ProVantage Winch

4500 lb (2041 kg) or 3500-lb (1588 kg) Winch. The ultimate winch for your Full-Size XUV.

<sup>1</sup>Hella and Warn are a third-party trademarks used with permission.

### Deluxe Light Kit

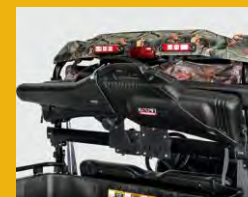
Includes Turn Signals, 4-Way Flashers, plus for 625i & 855D models Brake & Taillights.

### CAMOPLAST T4S Track System

Four-Season track system improves flotation and traction taking you where wheels simply can't go.



**Front/Rear CV Guards**  
Protect A-Arms and CV half-shafts. Easy installation. Steel construction.



**OPS Gun Mount Kit**  
Mount 2 Gun Boots to the OPS and keep your cargo box free for more gear.



**Long-Range Light Kit**  
Halogen lights help illuminate long distances for driving.



**Quick Clamp Attachments**  
See dealer for full collection of easily repositioned Quick Clamp attachments.



**72-in. POWERtack<sup>™</sup> Blade**  
Joystick-controlled. High-strength design, reinforced moldboard, heavy-duty springs.



**Fox<sup>™</sup> High Performance Racing Shox<sup>™</sup>**—Shocks give a consistent heavy-duty fade-free damping performance.



Front

Back

**Long Sleeve Riding Jersey M-3XL**

**Goggles by Scott<sup>™</sup>**  
All day comfort



**John Deere Branded Vega<sup>™</sup> Viper Helmet XS-2XL**



<sup>™</sup>POWERtack, FOX, Scott and Vega are third party trademarks used with permission.



FULL  
SIZE

# 825i / 825i S4

Full-Size power and speed.







## SPECS

### Engine and Electrical

Type  
Cylinders/Valving  
Horsepower<sup>1</sup>  
Displacement  
Maximum Torque  
Cooling System  
Battery  
Alternator

### Lights

Headlights

### On-demand True 4WD System

Front Differential  
Rear Differential

### Transmission Type

Ground Speed, mph (km/h)

Transaxle  
Front/Rear Brakes  
Park Brake  
Wheel Bearings

### Suspension and Steering

Front Suspension  
Front Suspension Travel  
Rear Suspension

Rear Suspension Travel  
Turning Radius

### Hitches

Front and Rear

### Occupant Protective System (OPS)

Tubular Overhead Structure  
Seat Belts  
Certification

### Ground Clearance

Ground Clearance  
Under Foot Platform

### Dimensions

Length  
Width  
Front/Rear-tread Centers  
Height (with OPS)  
Wheelbase  
Weight (dry weight)  
Towing Capacity  
Payload Capacity  
Sound Rating (driver's ear)

### Cargo Box

Material  
Dimensions, in. (mm)  
Volume  
Weight  
Dump  
  
Tailgate

### Tires, Front / Rear

Maxxis Big Horn 2.0, Radial  
Ancla MT (Mud Terrain)  
Terrahawk AT (All Terrain)

### Color options

## Gator XUV 825i

4-cycle gas, Electronic Fuel Injection (EFI)  
3 Dual Overhead Cam (DOHC) per cylinder  
50 (37 kW)  
812 cc  
47 ft.-lbs. (64 Nm) @3200 rpm  
Liquid  
34OCCA  
75 amp @ 6000 rpm, regulated, 1012 watts

Two 37.5 watt halogen

Auto-locking (on/off rocker switch)  
Positive locking, mechanically actuated

Continuously Variable Transmission (CVT) with clutch enclosure & engine braking  
0-44 (0-71) Hi Forward, 0-27 (0-43) Lo Forward, 0-30 (0-48) Reverse  
Two speed (hi-lo), oil bath  
Front/rear hydraulic disk  
Driveline mechanical disk, hand operated  
Sealed, double-row ball

Fully Independent Dual A-Arm with adjustable coils  
8 in. (203 mm)  
Fully Independent Dual A-Arm with adjustable coils and sway bar  
9 in. (228.6 mm)  
12.4 ft. (3.8 m)

Standard 2 in. (50.8 mm) receiver

1.75 in. (44.4 mm) steel tube  
3-point seat belts  
SAE J2194 and OSHA ROPS

11.0 in. (267 mm)  
12.25 in. (311 mm)

119 in. (3035 mm)  
62 in. (1571 mm)  
51.2 in. (1300 mm)  
75 in. (1903 mm)  
79 in. (2007 mm)  
1,630 lb. (739 kg)  
1,500 lb. (680 kg)  
1,400 lb. (635 kg)  
89.4 dB(A)

Hybrid steel/glass-filled poly  
45 x12 x52 (1143 x304.8x1320)  
16.4 ft<sup>3</sup> (0.46 m<sup>3</sup>)  
1,000 lb. (454 kg)  
Manual with lift assist shock (factory installed power lift option)  
Center truck-style latch

27x9xR14 / 27x11xR14  
26x9xR12 / 26x11xR12  
25x9xR12 / 25x11xR12

Green & Yellow, Camouflage, Olive & Black

## Gator XUV 825i S4

4-cycle gas, Electronic Fuel Injection (EFI)  
3 Dual Overhead Cam (DOHC) per cylinder  
50 (37 kW)  
812 cc  
47 ft.-lbs. (64 Nm) @3200 rpm  
Liquid  
34OCCA  
75 amp @ 6000 rpm, regulated, 1012 watts

Two 37.5 watt halogen 1125 +/- 75

Auto-locking (on/off rocker switch)  
Positive locking, mechanically actuated

Continuously Variable Transmission (CVT) with clutch enclosure & engine braking  
0-44 (0-71) Hi Forward, 0-27 (0-43) Lo Forward, 0-30 (0-48) Reverse  
Two speed (hi-lo), oil bath  
Front/rear hydraulic disk  
Driveline mechanical disk, hand operated  
Sealed, double-row ball

Fully Independent Dual A-Arm with adjustable coils  
8 in. (203 mm)  
Fully Independent Dual A-Arm with adjustable coils and sway bar  
9 in. (228.6 mm)  
17 ft. (5.2 m)

Standard 2 in. (50.8 mm) receiver

1.75 in. (44.4 mm) steel tube  
3-point seat belts  
SAE J2194 and OSHA ROPS

11.0 in. (267 mm)  
12.25 in. (311 mm)

154 in. (3921 mm)  
62 in. (1571 mm)  
51.2 in. (1300 mm)  
75 in. (1903 mm)  
114 in. (2895.6 mm)  
2059 lb. (934 kg)  
1,500 lb. (680 kg)  
1,400 lb. (635 kg)  
89.4 dB(A)

Hybrid steel/glass-filled poly  
45 x12 x52 (1143 x304.8x1320)  
16.4 ft<sup>3</sup> (0.46 m<sup>3</sup>)  
1,000 lb. (454 kg)  
Manual with lift assist shock (factory installed power lift option)  
Center truck-style latch

27x9xR14 / 27x11xR14  
26x9xR12 / 26x11xR12  
25x9xR12 / 25x11xR12

Green & Yellow, Camouflage



FULL  
SIZE

# 625i

Our base model workhorse.



## SPECIFICATIONS

### Engine and Electrical

Type  
Cylinders/Valving  
Horsepower  
Displacement  
Maximum Torque  
Cooling System  
Battery  
Alternator

4-cycle gas, Electronic Fuel Injection (EFI)  
2, OHV  
23 (16.8 kW)  
617cc  
34.6 ft.-lbs. (46.9 Nm) @2100 rpm  
Liquid  
340CCA  
25.5 amp @ 3200 rpm, regulated, 306 watts

### Lights

Headlights

Two 37.5 watt halogen

### On-demand True 4WD System

Front Differential  
Rear Differential

Auto-locking  
Positive locking, mechanically actuated

### Transmission Type

Ground Speed, mph (km/h)

Continuously Variable Transmission (CVT)  
with full clutch enclosure  
0-25 (0-48) Hi Forward, 0-17 (0-27) Lo Forward,  
0-20 (0-32) Reverse  
Two speed (hi-lo), oil bath  
Hydraulic disc with twin piston front calipers  
Driveline, internal wet multi-disc  
Sealed, double-row ball

Transaxle  
Front/Rear Brakes  
Park Brake  
Wheel Bearings

### Suspension and Steering

Front Suspension

Fully independent dual control arm with  
adjustable spring preload

Front Suspension Travel  
Rear Suspension

8 in. (203 mm)  
Fully independent dual control arm with  
adjustable spring preload and sway bar  
9 in. (228.6 mm)  
12.4 ft. (3.8 m)

Rear Suspension Travel  
Turning Radius

### Hitches

Front and Rear

Standard 2 in. (50.8 mm) receiver

### Occupant Protective System (OPS)

Tubular Overhead Structure  
Seat belts  
Certification

1.75 in. (44.4 mm) steel tube  
3-point seat belts  
SAE J2194 and OSHA ROPS

### Ground Clearance

Ground Clearance  
Under Foot Platform

Front - 11.0 in. (280 mm), Rear - 11.0 in. (280 mm)  
12.25 in. (311 mm)

### Dimensions

Length  
Width  
Front/Rear-tread Centers  
Height (with OPS)  
Wheelbase  
Weight (dry weight)  
Towing Capacity  
Payload Capacity  
Sound Rating (driver's ear)

119 in. (3035 mm)  
62 in. (1571 mm)  
51.4 in. (1305mm)/ 51.4 in. (1305mm)  
75 in. (1903 mm)  
79 in. (2007 mm)  
1,440 lb. (653 kg)  
1,500 lb. (680 kg)  
1,400 lb. (635 kg)  
86.5 dB(A)

### Cargo Box

Material  
Dimensions, in. (mm)  
Volume  
Weight  
Dump

Hybrid steel/glass-filled poly  
45 x12 x52 (1143 x304.8x1320)  
16.4 ft<sup>3</sup> (0.46 m<sup>3</sup>)  
1,000 lb. (454 kg)  
Manual with lift assist shock (factory installed  
power lift option)  
Center truck-style latch

Tailgate

### Tires, Front / Rear

Maxxis Big Horn 2.0, Radial  
Ancla MT (Mud Terrain)  
TerraHawk AT (All Terrain)

27x9xR14 / 27x11xR14  
26x9xR12 / 26x11xR12  
25x9xR12 / 25x11xR12

### Color options

Green & Yellow, Camouflage, Olive & Black



## Gator XUV 855D

### Engine and Electrical

4-cycle diesel  
3, OHV  
23 hp (17.0 kW)  
854cc  
36.9 ft.-lbs. (50 Nm) @2400 rpm  
Liquid  
480CCA  
55 amp @ 3200 rpm, regulated, 540 watts

### Lights

Two 37.5 watt halogen

### On-demand True 4WD System

Auto-locking  
Positive locking, mechanically actuated

Continuously Variable Transmission (CVT)  
with full clutch enclosure  
0-32 (0-52) Hi Forward, 0-15 (0-24) Lo Forward,  
0-18 (0-29) Reverse  
Two speed (hi-lo), oil bath  
Hydraulic disc with twin piston front calipers  
Driveline, internal wet multi-disc  
Sealed, double-row ball

### Suspension and Steering

Fully independent dual control arm with  
adjustable spring preload  
8 in. (203 mm)  
Fully independent dual control arm with  
adjustable spring preload and sway bar  
9 in. (228.6 mm)  
12.4 ft. (3.8 m)

### Hitches

Standard 2 in. (50.8 mm) receiver

### Occupant Protective System (OPS)

1.75 in. (44.4 mm) steel tube  
3-point seat belts  
SAE J2194 and OSHA ROPS

### Ground Clearance

Front - 11.0 in. (280 mm), Rear - 11.0 in. (280 mm)  
12.25 in. (311 mm)

### Dimensions

119 in. (3035 mm)  
62 in. (1571 mm)  
51.4 in. (1305mm)/ 51.4 in. (1305mm)  
75 in. (1903 mm)  
79 in. (2007 mm)  
1,640 lb. (744 kg)  
1,500 lb. (680 kg)  
1,400 lb. (635 kg)  
86.8 dB(A)

### Cargo Box

Hybrid steel/glass-filled poly  
45 x12 x52 (1143 x304.8x1320)  
16.4 ft³ (0.46 m³)  
1,000 lb. (454 kg)  
Manual with lift assist shock (factory installed  
power lift option)  
Center truck-style latch

### Tires, Front / Rear

27x9xR14 / 27x11xR14  
26x9xR12 / 26x11xR12  
25x9xR12 / 25x11xR12

Green & Yellow, Camouflage, Olive & Black

## Gator XUV 855D S4

4-cycle diesel  
3, OHV  
23 hp (17.0 kW)  
854cc  
36.9 ft.-lbs. (50 Nm) @2400 rpm  
Liquid  
480CCA  
55 amp @ 3200 rpm, regulated, 540 watts

Two 37.5 watt halogen

Auto-locking  
Positive locking, mechanically actuated

Continuously Variable Transmission (CVT)  
with full clutch enclosure  
0-32 (0-52) Hi Forward, 0-15 (0-24) Lo Forward,  
0-18 (0-29) Reverse  
Two speed (hi-lo), oil bath  
Hydraulic disc with twin piston front calipers  
Driveline, internal wet multi-disc  
Sealed, double-row ball

Fully independent dual control arm with  
adjustable spring preload  
8 in. (203 mm)  
Fully independent dual control arm with  
adjustable spring preload and sway bar  
9 in. (228.6 mm)  
17 ft. (5.2 m)

Standard 2 in. (50.8 mm) receiver

1.75 in. (44.4 mm) steel tube  
3-point seat belts  
SAE J2194 and OSHA ROPS

Front - 11.0 in. (280 mm), Rear - 11.0 in. (280 mm)  
12.25 in. (311 mm)

119 in. (3035 mm)  
62 in. (1571 mm)  
51.4 in. (1305mm)/ 51.4 in. (1305mm)  
75 in. (1903 mm)  
114 in. (2895.6 mm)  
1,640 lb. (744 kg)  
1,500 lb. (680 kg)  
1,400 lb. (635 kg)  
86.8 dB(A)

Hybrid steel/glass-filled poly  
45 x12 x52 (1143 x304.8x1320)  
16.4 ft³ (0.46 m³)  
1,000 lb. (454 kg)  
Manual with lift assist shock (factory installed  
power lift option)  
Center truck-style latch

27x9xR14 / 27x11xR14  
26x9xR12 / 26x11xR12  
25x9xR12 / 25x11xR12

Green & Yellow, Camouflage

# 855D / 855D S4

Diesel power to spare.





MID  
SIZE

# TWO OR FOUR



#### User friendly cockpit.

Enjoy easy-to-reach car-like controls, like the dash mounted gear selector, 4WD engagement, and differential lock lever, plus ample leg room.

#### Bench seats

Wide and comfortable for all day riding comfort. Black available on Camo and Olive. Yellow seat on green and yellow.





## The XUV550 and 550 S4.

We've loaded these smaller machines with powerful engines, a fully independent double wishbone suspension, four-wheel drive, room for up to four passengers and more—all at a great price with Gator-level power and performance to spare. And with 75+ optional attachments, there's no limit to what your Gator can do for you.

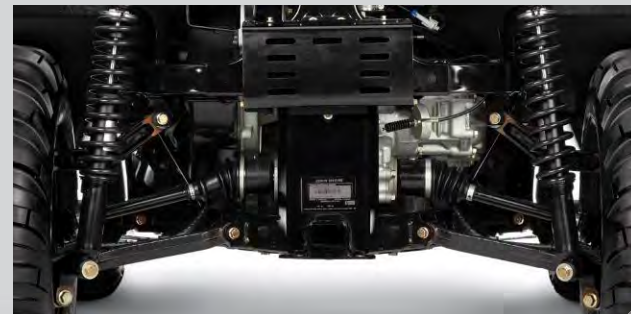


### Digital dash

Bright, clear digital display includes hour meter for maintenance plus driver's seatbelt and park brake alerts. Optional dash mounted speedometer, shown, adds digital speed.

### Fully independent suspension

Four-wheel independent suspension takes bumps out of the equation, making the ride smoother and tackling tough trails a no-brainer.





MID  
SIZE

# 550 / 550S4

Our most affordable 4x4's.



Mid-Size. Affordable. We call it a lot of things, but we'd like to call it your next Gator. With car-like controls and surprisingly smooth suspension, tough four-wheel drive and an attractive price tag, the 550 was designed to get you off the fence and onto the nearest trail.

And you'll need more friends with the 550 S4. Not only do you get independent double wishbone suspension, four-wheel drive, and a convertible rear seat cargo rack, you get a back seat. The S4 Gator takes on a couple of extra passengers, so you can take on the trails together—and tackle some bigger jobs, too.





#### Convertible cargo rack

Flip a switch and convert your rear seat into an additional cargo area. Keeps tools secure while allowing you to raise and lower the rear cargo box. Rack adds 4.3 cu. ft. of space and holds up to 200 lbs. (550 S4 only)



#### Underseat storage

Optional underseat storage provides additional 1.2 ft<sup>3</sup> to optimize space and keep items safe and secure on the trail. (550 S4 only)



#### Occupant Side Retention

ANSI certified OSR nets are standard and feature easy single handed open and closing.



#### Best-in-class sealed storage

1.82 cubic feet of sealed storage lets you put your gear in a safe, dry place.



#### Compact size

Take the 550 almost anywhere, even in the back of a full-size pickup truck.



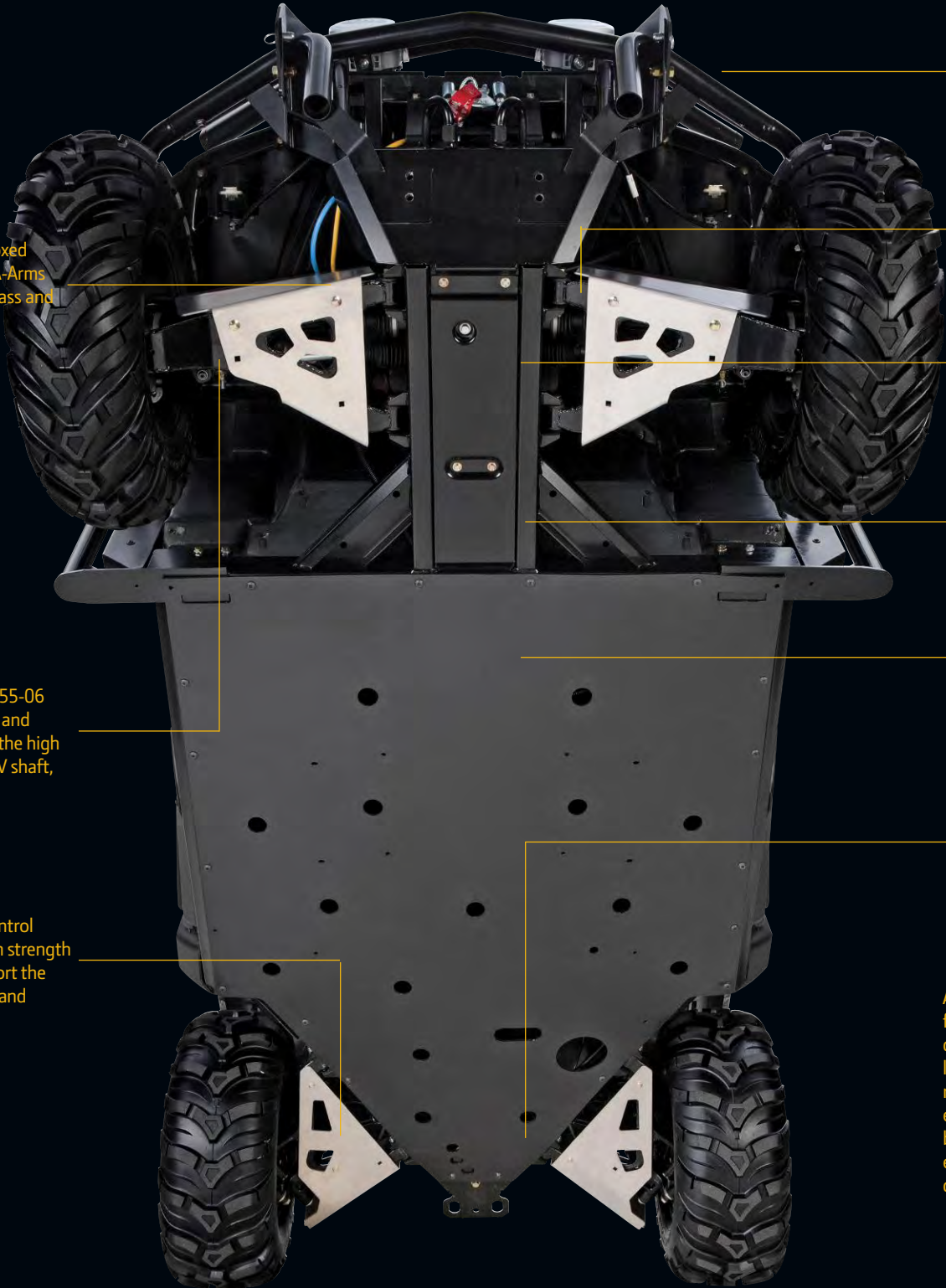
MID  
SIZE

# GATOR VS GATOR

You're going to want to kick the tires in person, but until then, we've combed every inch of these XUVs for you. And what you'll notice first is the perfect mix of toughness and convenience. Up top you'll see great ergonomics and storage volume, double-digit tie-down points and ample cargo box space. Underneath, these machines are built like tanks, with robotically welded frames and powerful disc brakes. Not to mention an engine with enough torque to go fast, faster (from zero—15 mph {24 km/h} in 3.2 sec).







Automotive style fully boxed and welded steel lower A-Arms to minimize unsprung mass and maximize strength.

High Strength ASTM 80-55-06 ductile cast-iron knuckle and upper A-Arm to support the high stresses of the shocks, CV shaft, and wheels.

Rear upper and lower control arms are made from high strength ductile cast iron to support the high stresses of the trail and impacts with rocks.

1.75 in. diameter heavy duty tubular steel front bumpers and fender guards ensure protection to the front end.

Tough polymer CV joint guards protect against rocks and debris. Optional aluminum CV guard, shown, adds strength without weight.

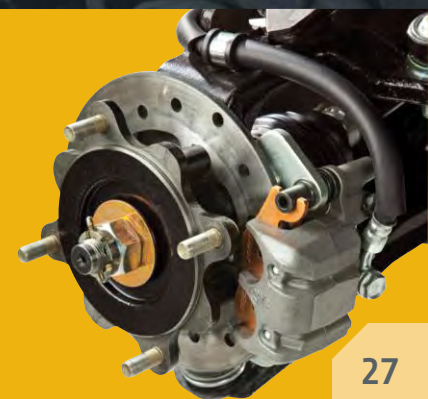
Full, robotically welded frame design provides a solid foundation for the ROPS certified occupant protection structure.

Frame is E-coated and powder painted for maximum durability in extreme temperatures, salt, and moisture.

Optional Underbody Skid Protection under critical components such as front differential, fuel tank, and power train. (not available on S4 models)

Distinct rear frame design shields the rear suspension and CV shafts from sticks and rocky terrain.

Automotive-style four-wheel hydraulic disc brakes with front left/rear right and front right/rear left circuits ensure front and rear braking capability even in the event of a damaged line.





MID  
SIZE

FACTORY-INSTALLED OPTIONS

# GO ALL IN.

Want to get all you can out of your XUV550? Choose the package that'll outfit your Gator with the attachments you want and need. See your package choices below.

Choose the right package and let our factory put it together for you.

Get all you can out of your Gator. Our factory installed packages serve up a professionally installed trim—from the optional OPS Poly Roof to the alloy wheels with Maxxis Bighorn 2.0 radial tires. All it needs is a little mud on it to make it yours.



## Utility & Protection Package\*

Includes:

- Front Brushguard
- OPS Black Poly Roof
- Cargo Box Rail

Stocker models with this package also include Yellow (or black) Alloy Wheels, Maxxis Bighorn Radial Tires, Bench Seat, Manual Lift, OPS w/Brake/Taillight.

## Protection Package\*

Includes:

- Front Brushguard
- Rear Bumper

\*Models and availability of packages may vary. See dealer for details.



## FACTORY-INSTALLED OPTIONS

Availability of Options and Attachments varies— See dealer for details.

### Colors



Green & Yellow (G&Y)



Camo  
REALTREE HARDWOODS HD® Pattern



Olive & Black



Front Brushguard  
Protects the front end from whatever comes your way.



Rear Bumper  
2" tubing protects cargo box and tailgate.



Warn® Winch  
3,500 lb. (1361 kg) winch. Includes a water-resistant remote control.



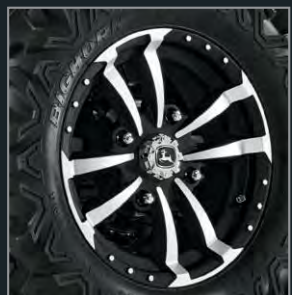
Brake/Taillight  
Attaches to rear bar of OPS.



OPS Roof & Rear screen  
Provides additional protection from the elements and rear. Includes headrests.



Optional Seat Storage (550 S4 only)  
Optimize space with 1.2 ft³ of underseat storage.



14" Matte Black  
Tires



14" Silver Alloy



14" Yellow Alloy



Maxxis BigHorn 2.0 Radials for extreme terrain (alloy wheels only)  
Front 25x8-14 Rear 25x10-14



Ancla XTs for good mudding/ extreme terrain  
Front 25x8-14 Rear 25x10-14



Terra Hawk ATs for excellent handling and low impact on turf  
Front 25x8-14 Rear 25x10-14

## OPTIONAL ATTACHMENTS

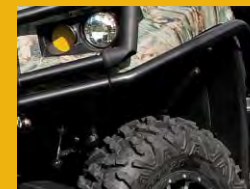
See [JohnDeere.com/Gator](http://JohnDeere.com/Gator) or [JohnDeere.ca/Gator](http://JohnDeere.ca/Gator) for the full list.



Standard Straight Blade, 66"  
Quick-attaching front blades have replaceable cutting edges, skid shoes, power lift and three-position angling.



Front/Rear CV Guards  
Protect A-Arms and CV half-shafts. Easy installation. Steel construction.



Front Fender Guards  
Protects front and side molding with heavy duty 2" steel tubing.



Front hood rack  
Generously sized rack (48" long, 13.5" wide by 3.5" deep) will carry up to 100 lbs. of gear.



Hella® Performance Spot Lights  
Halogen lights (two) produce great short-range pattern.



Windshields  
Half, full (shown), and full glass with wiper. Tool-less installation.



Cargo Box Wall Extensions  
Extend your cargo space with these Quick-Clamp extensions.



OPS Poly Roof  
All-year-round weather protection. Molded water troughs. Black or Camo.



Seat Belt Comfort Strap  
Increases comfort by lowering seat belt cross point.

OPS Poly Cab  
All-weather protection and comfort. (Requires Poly Roof, rear panel and Full Windshield).





MID  
SIZE

# 550 / 550 S4

Our most affordable 4x4's.







## SPECIFICATIONS

### Engine and Electrical

Type  
Cylinders/Valving  
Horsepower<sup>1</sup>  
Displacement  
Maximum Torque  
Cooling System  
Battery  
Alternator

### Lights—Headlights

### On-demand True 4WD System

Front Differential  
Rear Differential

### Transmission Type

Ground Speed, mph (km/h)

Transaxle  
Front/Rear Brakes

Park Brake  
Wheel Bearings

### Suspension and Steering

Front Suspension  
Front Suspension Travel  
Rear Suspension  
Rear Suspension Travel  
Turning Circle

### Hitches (Front and Rear)

### Occupant Protective System (OPS)

Tubular Overhead Structure  
Seat Belts  
Certification

### Ground Clearance

Ground Clearance  
Under Foot Platform

### Dimensions

Length/Width  
Front/Rear-tread Centers  
Height (with OPS)  
Wheelbase  
Weight (dry weight)  
Towing Capacity  
Payload Capacity  
Seating Capacity

### Cargo Box

Material  
Dimensions, in. (cm)

Volume, cu. ft. (m<sup>3</sup>)

Weight  
Dump

Tailgate

### Tires, Front / Rear

Maxxis Big Horn 2.0, Radial  
Ancla MT (Mud Terrain)  
Terrahawk AT (All Terrain)

### Color options

### Storage

## Gator XUV 550

4 cycle gas, dynamically tuned carb  
V-Twin, OHV  
16 hp (11.9 kw)  
570cc  
28.6 ft.-lb. (38.8 Nm) @2400 rpm  
Air cooled  
340 CCA  
16 amp @ 4100 rpm, regulated  
Two 37.5 watt halogen

Limited slip- lever engagement  
Positive locking, mechanically actuated

Continuously Variable Transmission (CVT)  
with full clutch enclosure  
0-28 (0-45) Hi Forward,  
0-17 (0-27) Lo Forward, 0-20 (0-32) Reverse  
Two speed (hi-lo), oil bath  
Front/rear hydraulic disc w/twin  
piston calipers and stainless steel rotors  
Foot operated, mechanical disc  
Sealed, double-row ball

Independent; double A-arm w/coil over shock  
9 in. (229mm)  
Independent; H-arm and control link w/coil over shock  
8 in. (203 mm)  
12.3 ft. (3.4 m)  
Optional 2-in receiver (front),  
Integrated 2-in receiver (rear)

1.75 in. (44.4 mm) steel tube  
3-point seat belts  
SAE J2194 and OSHA ROPS

10.5 in. (267 mm)  
10.5 in. (267 mm)

113 in (2.9 m) / 56.5in(1435mm)  
48 in. (1220 mm)/46 in. (1170 mm.)  
73.5 in. (1867 mm)  
72.8in. (1950 mm)  
1,220 lbs. (553 kg.)  
1,100 lb. (499 kg)  
800 lb.(363 kg.)  
2

Composite  
32.3L x 47.6W x 11.7D  
(820L x 1209W x 297D)  
8.9 (0.25)

400 lb. (181 kg)  
2-sided - Manual release  
(optional factory installed power lift)  
Center truck-style latch

25x8-14/25x10-14  
25x8-12/25x10-12  
25x8-12/25x10-12

Green & Yellow, Camouflage, Olive & Black  
Sealed oversized Glove Box, Under hood storage  
1.82 ft<sup>3</sup> (0.052m<sup>3</sup>)

## Gator XUV 550 S4

4 cycle gas, dynamically tuned carb  
V-Twin, OHV  
16 hp (11.9 kw)  
570cc  
28.6 ft.-lb. (38.8 Nm) @2400 rpm  
Air cooled  
340 CCA  
16 amp @ 4100 rpm, regulated  
Two 37.5 watt halogen

Limited slip- lever engagement  
Positive locking, mechanically actuated

Continuously Variable Transmission (CVT)  
with full clutch enclosure  
0-28 (0-45) Hi Forward,  
0-17 (0-27) Lo Forward, 0-20 (0-32) Reverse  
Two speed (hi-lo), oil bath  
Front/rear hydraulic disc w/twin  
piston calipers and stainless steel rotors  
Foot operated, mechanical disc  
Sealed, double-row ball

Independent; double A-arm w/coil over shock  
9 in. (229mm)  
Independent; H-arm and control link w/coil over shock  
8 in. (203 mm)  
19.7 ft. (6 m)  
Optional 2-in receiver (front),  
Integrated 2-in receiver (rear)

1.75 in. (44.4 mm) steel tube  
3-point seat belts  
SAE J2194 and OSHA ROPS

9.5 in. (241 mm)  
9.5 in. (241 mm)

144 in. (3658 mm) / 56.5 (1435 mm)  
48 in. (1220mm)/46 in. (1170mm)  
74 in. (188mm)  
108 in (2.7 m)  
1,455 in. (660 mm)  
1,100 lb. (499 kg)  
1,200 lb. (544 kg)  
4

Composite  
32.3L x 47.6W x 11.7D  
(820L x 1209W x 297D)  
8.9 (0.25) – Additional 4.3 ft.<sup>3</sup>  
convertible cargo rack, Total = 13.2  
400 lb. (181 kg)  
2-sided - Manual release  
(optional factory installed power lift)  
Center truck-style latch

25x8-14/25x10-14  
25x8-12/25x10-12  
25x8-12/25x10-12

Green & Yellow, Camouflage, Olive & Black  
Sealed oversized Glove Box, Under hood storage  
1.82 ft<sup>3</sup> (0.052m<sup>3</sup>). Optional underseat storage





[JohnDeere.com/Gator](http://JohnDeere.com/Gator) | [JohnDeere.ca/Gator](http://JohnDeere.ca/Gator)

\*The engine horsepower and torque information are provided by the engine manufacturer to be used for comparison purposes only. Actual operating horsepower and torque will be less. Refer to the manufacturer's web site for additional information. \*\*Features, specs and attachments subject to change without notice. Before operating or riding, always refer to the safety and operating information on the vehicle, and in the Operator's Manual. Actual vehicle top speed may vary based on belt wear, tire selection, vehicle weight, fuel condition, terrain and other environmental factors. Travel responsibly on designated roads, trails or areas, respect the rights of others, and avoid sensitive areas such as meadows, lakeshores, wetlands and streams. This literature has been compiled for worldwide circulation. While general information, pictures and descriptions are provided, some illustrations and text may include finance, credit, insurance, product options and accessories NOT AVAILABLE in all regions. PLEASE CONTACT YOUR LOCAL DEALER FOR DETAILS. John Deere reserves the right to change specification, design and price of the products described in this literature without notice. John Deere's green and yellow color scheme, the leaping deer symbol, and JOHN DEERE are trademarks of Deere & Company. DSTA63704 (6-15)



**JOHN DEERE**

Nothing runs like a Deere™