


6M Series

110–195 Engine Horsepower Tractors



*Made to perform
at a higher level.*



A close-up, low-angle shot of the front of a John Deere 6155M tractor. The hood is painted in the iconic John Deere green, with a bright yellow stripe running along the top edge. The "JOHN DEERE" logo is visible in yellow on the left side of the hood. Below the stripe, the model number "6155M" is printed in yellow. A black mesh grille is visible on the right side of the hood. A single round headlight is mounted on the front right corner. The background is dark, making the green of the tractor stand out.

The capable, ready-for-anything 6M

- *Mid-size with a higher level of performance*
- *Built on a foundation of durability and versatility*
- *Fuel efficient Final Tier 4 engines*
- *Increased horsepower for every model*



Hardworking versatility. Delivered.

If it's hard work you have in mind, the 6M is ready to help you get the job done. It fits right between the 6E value-spec utility tractor and the ultimate comfort and performance of the premium 6R. The perfect mix of options, performance features, automation, comfort, and economy. Made to fit the way you work ... 2WD, MFWD, open station, cab, high-output hydraulics, and multiple transmission choices.



Small chassis: 6110M – 6130M

Mid chassis: 6145M – 6155M

Large chassis: 6175M – 6195M

CONTENTS

Introduction	4-5
Cab Open Operator Station	6-7
PowerTech™ engines	8-9
Transmission options	10-11
Hydraulics Hitch	12-13
PTO Systems.....	14-15
Compatible loaders	16-17
6110M – 6130M	18-21
6145M – 6155M	22-25
6175M – 6195M	26-29
Frontier	30-31
PowerGard™ GreenStar™ Attachments	32-35



If you need a tractor that can deliver on the promise of productivity, the 6M gets the job done. And then some.

When your day calls for mixing feed in the morning, cleaning bunks before lunch, and an afternoon filled with chores like baling, moving gravel, and roadside mowing, you need a tractor that's not just versatile, but tough enough to handle it all.

Welcome to the 6M

It's the mid-size, mid-range tractor made to perform at a higher level. It features the hydraulic capacity to cycle heavier loads and lift rear implements, the engine power and torque to pull through tough conditions, and the comfort to keep you going strong ... all day long.

Mid-spec ... not middle of the pack

With the 6M, utility, performance, and durability are the name of the game.



6110M 6120M 6130M | 6145M 6155M | 6175M 6195M



Settle in for longer days

The quiet, smooth ride and easy operation will keep you going ... and working hard.

Maximizing comfort is how you maximize what you get done in a day.

The 6M delivers.

It starts with a high-quality John Deere seat designed to keep you relaxed and in the right position. Add in controls that are intuitive and easy-to-use, ample floor space for your feet to move around, plenty of glass for visibility, plus gauges that are easy to read, and there's a great recipe for reducing fatigue.

Up your comfort even more by adding the optional mechanical cab suspension. It allows you to ride over rougher ground at higher speeds with less stress on your back and legs.

Boost visibility with the optional loader view roof.



The open operator station doesn't take a back seat to comfort or control. There's easy access, a spacious, flat floor, and an adjustable seat with arm rests.





Part of 6M productivity is the spacious, well-appointed cab, good visibility, intuitive controls, and a 15-degree swivel seat that puts you in a better position when hooking up to implements, or keeping tabs on wide-working tillage tools.

The Final Tier 4 John Deere PowerTech™ engine in every 6M takes uptime, cost of operation, and fluid efficiency to the next level.

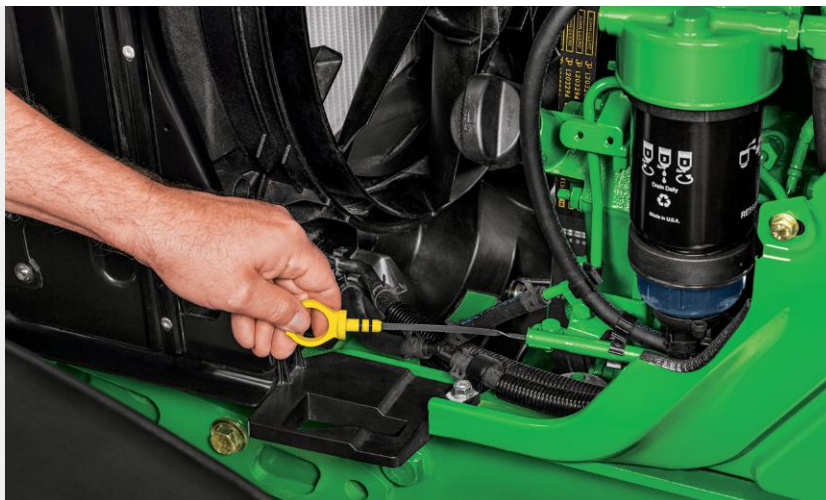
That begins with intelligent technology. Like an engine control unit that checks conditions 100 times each second. Before you even realize your power requirements have changed, your 6M has responded, delivering smooth power to meet the changing conditions. Productivity goes up while the need for shifting gears, fuel consumption, and operator fatigue goes down. And with plenty of torque you won't bog down during tough PTO and transport jobs.

Another smart feature ... common rail fuel injection produces nearly instantaneous throttle response, smooth power and plenty of low-end grunt. All at lower engine speeds, which reduces fuel consumption and engine wear.

Economy meets performance: *The FT4 PowerTech engine brings the muscle while also delivering fluid efficiency and responsiveness.*

*At the heart of
better performance*





Easy access to daily maintenance checks and service intervals of 750 hours (on 6 cylinder engines) reduce downtime and save you money over the life of your tractor. Add in JD Link™ Universal to monitor machine location, performance, and maintenance schedules.

6M engines are built on a legacy of reliability ... so your tractor will deliver years or durable service.

6M TRACTORS ARE BASED ON THREE FRAME SIZES AND WHEELBASES:

6110M, 6120M and 6130M	2,580 mm	101.6 in.
6145M and 6155M	2,765 mm	108.9 in.
6175M and 6195M	2,800 mm	110.3 in.

The right speed for the job

Three different transmissions and many different variations ... so you can take your day into overdrive.

The right gears makes all the difference. And with the transmissions available on the 6M, you'll have plenty of options for your applications, budget, and the way you work.

NEW CommandQuad™ PLUS is a 20F/20R (25 mph/40 km/h) transmission available on the 6175M and 6195M, and maintains the reliability of an AutoQuad™ transmission while enhancing operator convenience and productivity through increased automatic shifting capabilities. The transmission is equipped with left-hand reverser, and four power-shiftable gears in five fully synchronized ranges. The selected gear is displayed on the digital display (1 to 4).

The PowrQuad™ comes in three versions ... the 24F/24R (25 mph/40 km/h), the 20F/ 20R and the 16F/16R (19 mph/ 30 km/h). Each offers four, clutch-free shifts in each range.

The AutoQuad PLUS™ is a 24F/24R (25 mph/40 km/h) or 20F/20R (25 mph/40 km/h) that lets you program the shifts automatically within a range depending on the load.

If you do loader work or need to work at super slow speeds, the 6M delivers there, too. All available transmissions come with a left-hand reverser for clutch-free forward and reverse direction changes. You can also get a creeper option for super slow speeds to .15 mph (.25 km/h).



TRANSMISSION CHOICES FOR 6M CAB TRACTORS:

TRANSMISSION	SPEED	6110M	6120M	6130M	6145M	6155M	6175M	6195M
CommandQuad PLUS	25 mph (40 km/h)	NA	NA	NA	NA	NA	20/20	20/20
PowrQuad PLUS	19 mph (30 km/h)	16/16	16/16	16/16	16/16	16/16	16/16	16/16
PowrQuad PLUS	25 mph (40 km/h)	24/24	24/24	24/24	24/24	20/20	20/20	20/20
AutoQuad PLUS	25 mph (40 km/h)	24/24	24/24	24/24	24/24	20/20	20/20	20/20

TRANSMISSION CHOICES FOR 6M SERIES OPEN OPERATOR STATION TRACTORS

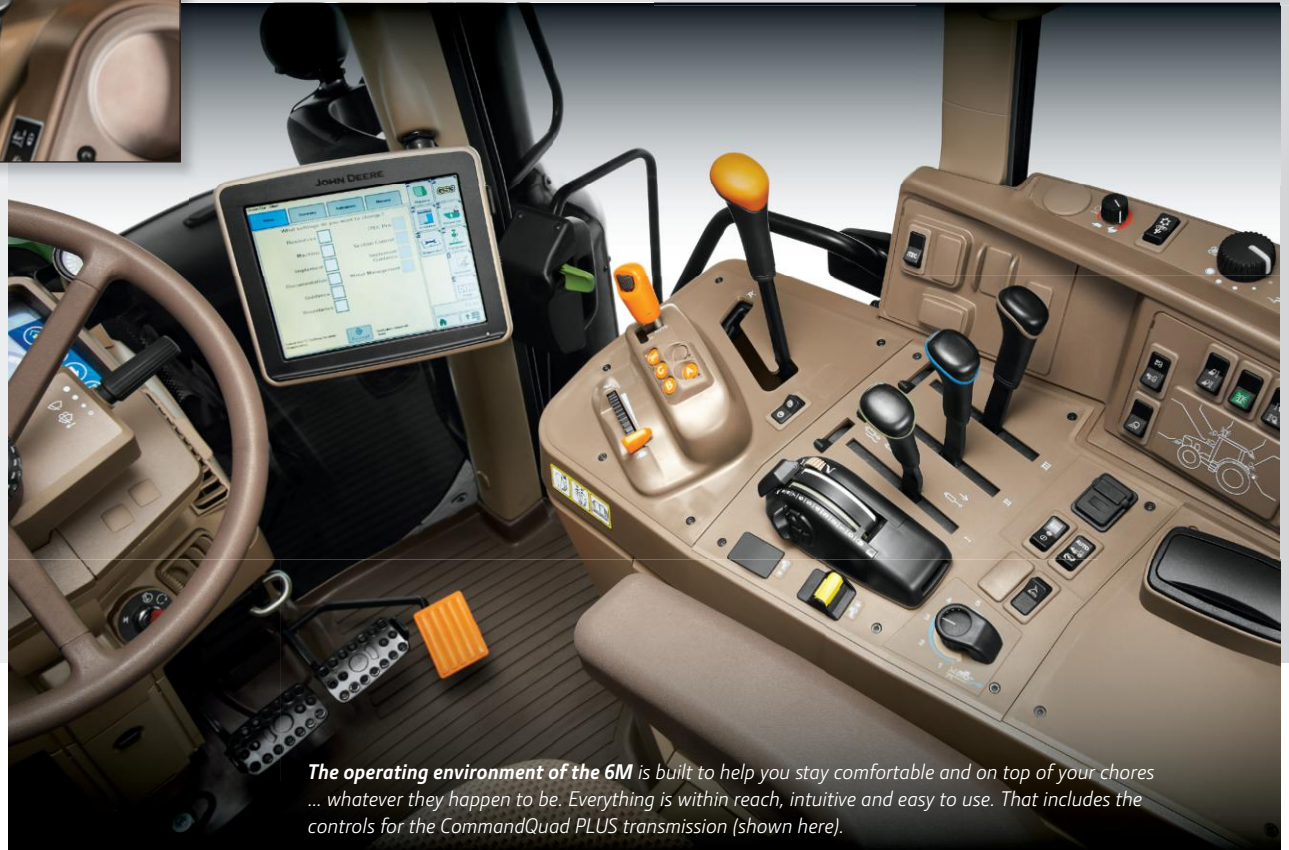
TRANSMISSION	SPEED	6110M	6120M	6130M	6145M	6155M
PowrQuad	19 mph (30 km/h)	16/16	16/16	16/16	16/16	NA
PowrQuad	25 mph (40 km/h)	24/24	24/24	24/24	24/24	20/20

When you need to slow down, you have PowerFill™ brakes that are liquid cooled for more power and longevity.



Joystick with push button
activation lets you shift and control the loader with one lever.

Left-hand PowrReverser™ makes clutch-free forward and reverse shifts easy and will help you handle loader work more efficiently.



The operating environment of the 6M is built to help you stay comfortable and on top of your chores ... whatever they happen to be. Everything is within reach, intuitive and easy to use. That includes the controls for the CommandQuad PLUS transmission (shown here).

*Ready to tackle the impossible?
The 6M is ...*

Big days call for big hydraulic performance. And the 6M has the muscle to handle large implements with ease.

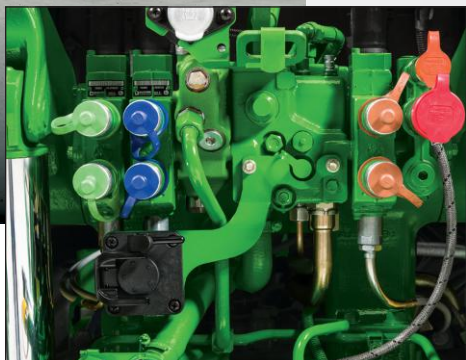
The pressure and flow compensated hydraulic system – with load sensing – delivers up to 30 gpm (113 lpm) of hydraulic flow, so you can take on tough jobs in a hurry.

Lift two 5' x 6' bales, load a trailer or truck in no time, and dig deep into compacted feed bunks with up to 4,523 pounds (2056 kg) and 2,900 psi of front-end capacity. And with a rear hitch-lift capacity up to 10,582 pounds (4799 kg) you can hook up to large implements without slowing down.

Easy, intuitive controls make loader chores a snap.



Get ready to flex some muscle



Up to three SCVs with premium couplers make it fast and easy to hook up and go.



***Big lift:** With 30 gpm (113 lpm) and up to 10,582 pounds (4,535 kg) of hitch-lift capacity, you'll be ready for loader chores and big implements.*

Hook up the reversible, 540/1000 rpm PTO and chew through your to-do list.

Balers, flex-wing mowers, post-hole diggers, feed mixers... whatever you've got, the 6M is versatile enough to take it on. And then some.

That starts with power.

PTO horsepower for the 6M ranges from 86 (64 kw) all the way up to 158 (117 kw), depending on the model. And you can move from one implement – and chore – to the next by simply reversing the shaft. The dry sump means quick changeover without oil loss. With the electrohydraulic switch (pictured below), the PTO engages smoothly. Just activate it and the PTO glides into action.

*The power to connect ...
the versatility to do what you need*



The 540/1000 RPM reversible PTO on the 6M can be removed and replaced in less than 30 seconds without a mess.

Versatility is part of the 6M package

An electrohydraulic PTO clutch makes engaging simple and easy. The independent PTO will continue to work regardless of the gear you're in or during stop and start performance.



*PTO power and versatility ...
both are built into every 6M tractor.*



With an R or H Series Loader on the front of a 6M, you'll be ready to make things happen.

The 6M was born to load. So if you've got bales to move, trucks to load, seed boxes to stack, snow to clear, or dirt to dig, it's ready to get down to the tough stuff.

It starts with hydraulic flow of up to 30 gpm (113 lpm).

That translates into fast cycles times, even for the heaviest loads you've got. Productivity goes up and you get more done. And with the full frame of the 6M – coupled with the solid, cast-iron loader frame, you're not going to feel any flex while you work. Or worry about the durability of your perfectly integrated tractor/loader team.



Dig into your day



Easy direction changes:

All 6M transmissions feature a left-hand reverser that allows you to make clutch-free direction changes for increased productivity during loader work.



Choose between the heavy-duty H Series Loaders ... or go for even higher lift capacity, rollback, and breakout force with the hard-hitting R Series Loaders, which also feature Automatic Mast Latch for our fastest tool-free attachment and removal.

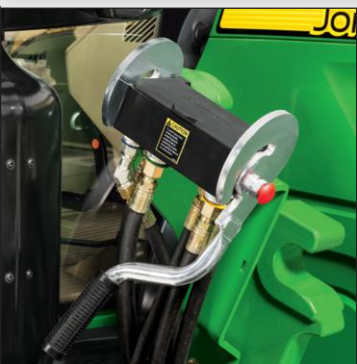
See more and do more with an optional loader view roof that will help you see your work up high and make you more efficient.



False rod bucket cylinders require a smaller displacement of oil on the head end of the cylinder allowing the cylinder to dump significantly faster than a normal cylinder. The result? Faster bucket dumping cycle times. (False rod bucket cylinders are only available on Mechanical Self-Leveling configurations.)

Concealed oil lines, routed through the boom arm and torque tube, protect the hydraulic system and give the loader a more attractive appearance.

Cast steel components add strength and durability.



Convenient single-point hydraulic connections save time while eliminating connection error with virtually no oil loss. Plus, electrical connections are integrated in the single-point connection.



LOADER COMPATIBILITY CHART - UTILITY TRACTORS

TRACTOR MODELS		620R NSL	620R MSL	640R NSL	640R MSL	H360 NSL	H360 MSL	H380
6M Series (Small Chassis)								
6110M, 6120M, and 6130M	2WD	X	X	X ¹³				
6110M, 6120M, and 6130M	MFWD	X	X	X ¹³	X ¹³			
6M Series (Mid Chassis)								
6145M and 6155M	2WD			X	X			
6145M and 6155M	MFWD			X	X			
6M Series (Large Chassis)								
6175M and 6195M	2WD					X	X	X
6175M and 6195M	MFWD					X	X	X

NOTES: Loaders are not compatible with high clearance, high crop, mudder, or track tractors. For complete tire and fender compatibility, as well as ballasting requirements, refer to the Ag Sales Manual and/or Loader Operators Manual.
¹³ - 640R loader requires the Cylinder Stop Kit for optimum performance with 6110R/M, 6120R/M, and 6130R/M tractors. For loader ready tractors, order code 1996 to receive the kit, for field installation of the loader, the Cylinder stop kit is included in mounting frame code 1621.

The 110 to 130 horsepower 6M Series
feature 4.5 liter John Deere PowerTech engines known for fuel efficiency and delivering long-term durability. They're perfect if you're working with limited space and need a tractor that can deliver the goods.

It's available in 2WD, MFWD, open station and cab. Choose from two transmissions with many variations, and a variety of other options that allow you to tailor your 6M to the application and work style.

If it's performance you want, that's what you get.

With a standard 21 gpm (79 lpm) or an optional 30 gpm (113 lpm) of hydraulic flow, standard hitch-lift capacity of 5,154 pounds (2,338 kg) or an optional capacity of 6,247 pounds (2,834 kg), and PTO horsepower of up to 102 hp (75 kw), it won't just hold its own, but will own the day.

The small-chassis tractor big on ability

Just because this 6M can go where bigger tractors can't doesn't mean it won't deliver big performance.

The small-chassis 6M is made for utility chores where agility and performance are part of getting the job done.

6110M | 6120M | 6130M



6110M | 6120M | 6130M Series Specifications



6M Series Specifications 6110M | 6120M | 6130M

	6110M	6120M	6130M
POWER * estimated			
Rated PTO power (hp SAE) at rated engine speed (2100 rpm)	86 hp (64 kW)	95 hp (71 kW)	102 hp (76 kW)
Rated Engine power hp (hp ISO) at 2100 engine rpm (97/68EC)*	110 hp (81 kW)	120 hp (88 kW)	130 hp (96 kW)
Max Engine power hp (hp ISO) at 1900 engine rpm (97/68EC)*	116 hp (85 kW)	127 hp (93 kW)	137 hp (101 kW)
ENGINE			
Manufacturer	John Deere PowerTech™ PSS (B20 Diesel Compatible)		
Rated Speed	2100 rpm		
Type	Diesel, in-line, 4-cylinder, wet-sleeve cylinder liners with 4 valves-in-head		
Aspiration	(US EPA Final Tier4/Stage IV) Dual Series Turbocharger w/fixed geometry first stage-variable geometry second stage - air-to-air aftercooling and cooled exhaust gas recirculation		
Filter, engine air	PowerCore G2 Air Filter with Pre-cleaning		
After treatment type	Cooled exhaust gas recirculation (EGR), Diesel Particle Filter (DPF) with Diesel Oxidation Catalyst (DOC) and Selective Catalytic Reduction (SCR) using DEF		
Displacement	4 / 4.5 L		
TRANSMISSION			
12F/4R SyncroPlus™ transmission 30K (OOS Only)	x	x	x
16 Speed PowrQuad Transmission 30K (OOS Only)	x	x	x
24 Speed PowrQuad Transmission 40K (OOS Only)	x	x	x
16 Speed PowrQuad PLUS™ Transmission 30K (Cab Only)	x	x	x
24 Speed PowrQuad PLUS Transmission 40K (Cab Only)	x	x	x
24 Speed AutoQuad PLUS Transmission 40K (Cab Only)	x	x	x
ELECTRICAL SYSTEM			
Alternator/Battery	14V, 12o amps (14V, 200 amp Optional on cab only)/12V		
REAR AXLES AND WHEEL EQUIPMENT			
	Group 45/46	Group 45/46	Group 45/46
Flanged axle, 2-position fixed steel wheels	Option	Option	Option
Flanged axle, 8-position adjustable steel wheels	Base	Base	Base
79.45 x 2555 mm (3.1 In. x 100.6 In.) with 2-Position Fixed Cast Wheels	Option	Option	Option
79.45 x 2555 mm (3.1 In. x 100.6 In.) with 2-Position Fixed Steel Wheels	Option	Option	Option
FRONT AXLES			
2WD – tread range 60.4 to 80.4 in. (1534 to 2042 mm)	Option	Option	Option
MFWD - Fixed rims	Option	Option	Option
MFWD - Adjustable rims	Base	Base	Base
HYDRAULIC SYSTEM			
Selective control valves (rear/mid)	Pressure Compensated (PC) / Pressure & Flow Compensated (PFC) System with Load Sensing Function (with PFC) up to 3 rear mechanical or 3 with powerbeyond / 3 mid mount mechanical		
Main pump, axial piston (displacement)	35cc 45cc		
Maximum pressure	2,900 psi (20,000 kPa)		
Rated flow	21.1 U.S. GPM (80 L/min or PFC of 30 gpm (114 L/min))		
Available flow at a single SCV	21.1 U.S. gpm/80 lpm		
Take out oil capacity without/with additional tank	6.6/9.8 gal. (25/37 liters)		
3-POINT HITCH (rear) - Electrohydraulic Sensing	Category 2/3N		
Lift Capacities - Standard	5,582 lb. (2500 kg)	5,582 lb. (2500 kg)	6,474 lb. (2900 kg)
Lift Capacities - Optional	7,431 lb. (3400 kg)	7,431 lb. (3400 kg)	8,456 lb. (3800 kg)
DRAWBAR			
	Cat 2 1400 kg (3085 lb.) - 2450 kg (5400 lb.) Maximum Vertical Load dependent on drawbar position - Standard		
PTO			
	Independent 1-3/8 in., 540/1000 reversible shaft		
PTO Speed @ Engine RPM	540 rpm @ 1932 engine rpm 1000 rpm @ 1932 engine rpm		
Front Hitch and PTO	NA	NA	NA
CAPACITIES			
Fuel Tank, Standard	51 gal. (195L)	51 gal. (195L)	51 gal. (195L)
DEF Tank	3.4 gal. (13L)	3.4 gal. (13L)	3.4 gal. (13L)
Cooling System	5.8 gal. (22L)	5.8 gal. (22L)	5.8 gal. (22L)
WHEELBASE			
2WD	101.6 in. (2580 mm)	101.6 in. (2580 mm)	101.6 in. (2580 mm)
MFWD	101.6 in. (2580 mm)	101.6 in. (2580 mm)	101.6 in. (2580 mm)
MFWD axle ground clearance with standard MFWD tyres	20.47 in. (520 mm)	20.47 in. (520 mm)	20.47 in. (520 mm)
AVERAGE STANDARD WEIGHT less front weights			
MFWD/AQ Plus/TLS/drawbar/base weight	11,040 lbs. (5,007 kg)	11486 lbs. (5210 kg)	11519 lbs. (5225 kg)
Max Ballast Level			
	Maximum recommended ballast is 163 lbs./SAE PTO HP -see OM for specific ballast instructions		
Max Payload Capacity	19,069 lbs. (8650 kg)	20,172 lbs. (9150 kg)	20,172 lbs. (9150 kg)

* 97/68/EC power refers to average (50% MOE) net brake power measured and corrected for ambient conditions according to the EC emissions directive. It is equivalent to internal Deere Standard RES10080, and SAE Standards J1349, J1995. Nominal data is metric. Standard data is converted from metric data. Use metric for all calculations

The 145 and 155 engine horsepower 6M Series are medium-chassis tractors made for beef and dairy producers, municipal operations, and farms needing real muscle in a mid-size, versatile, do-it-all tractor.

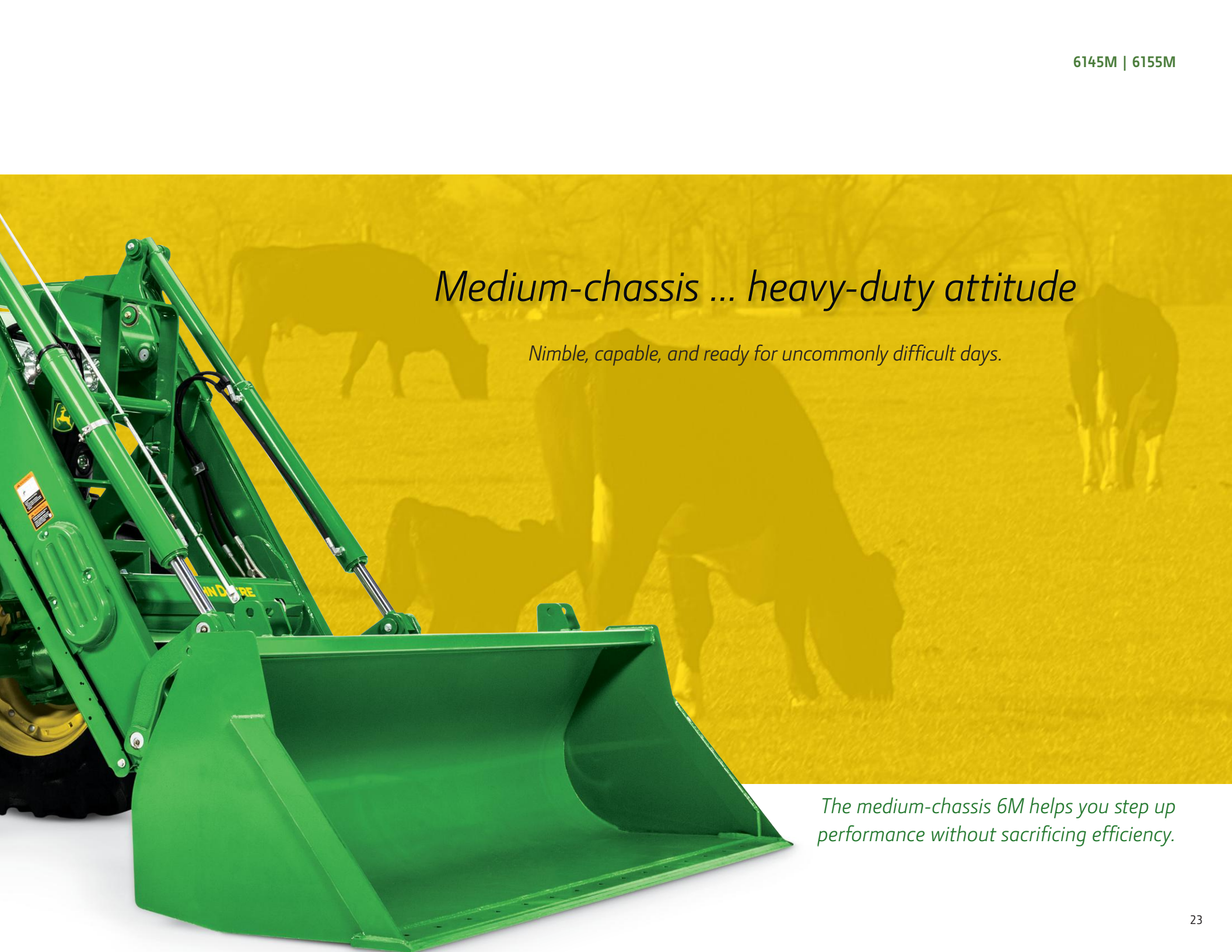
Loader chores? Hay to cut and bale? Miles of roadway to mow? The medium-chassis 6M will say yes to a long list of big jobs.

It all starts with a higher level of performance. With 21 gpm (79 lpm) of hydraulic power, hitch lift capacity of up to 8,984 pounds (4,075 kg) and up to 123 PTO horsepower, you've got the muscle to move from one job to the next.

Up performance and go even bigger with optional hydraulic flow of 30 gpm (113 lpm) and a hitch lift capacity of 10,141 pounds (4,600 kg). And with both the 4.5 and 6.8 liter John Deere PowerTech engines, you have the power to stay on top of changing demands while maintaining fuel efficiency.

The mid-chassis 6M is available in 2WD, MFWD, open station, and cab models.





Medium-chassis ... heavy-duty attitude

Nimble, capable, and ready for uncommonly difficult days.

The medium-chassis 6M helps you step up performance without sacrificing efficiency.

6145M | 6155M Series Specifications



	6145M	6155M
POWER * estimated		
Rated PTO power (hp SAE) at rated engine speed (2100 rpm)	114 hp (85 kW)	123 hp (91 kW)
Rated Engine power hp (hp ISO) at 2100 engine rpm (97/68EC)*	145 hp (107 kW)	155 hp (114 kW)
Max Engine power hp (hp ISO) at 1900 engine rpm (97/68EC)*	153 hp (113 kW)	164 hp (120 kW)
ENGINE		
Manufacturer	John Deere PowerTech™ PSS (B20 Diesel Compatible)	John Deere PowerTech™ PVS (B20 Diesel Compatible)
Rated Speed	2100 rpm	
Type	Diesel, in-line, 4-cylinder, wet-sleeve cylinder liners with 4 valves-in-head	Diesel, in-line, 6-cylinder, wet-sleeve cylinder liners with 4 valves-in-head
Aspiration	(US EPA Final Tier4/Stage IV) Dual Series Turbocharger w/fixed geometry first stage-variable geometry second stage - air-to-air aftercooling and cooled exhaust gas recirculation	Variable Geometry Turbocharger second stage - air-to-air aftercooling and cooled exhaust gas recirculation
Filter, engine air	PowerCore G2 Air Filter with Pre-cleaning	
After treatment type	Cooled exhaust gas recirculation (EGR), Diesel Particle Filter (DPF) with Diesel Oxidation Catalyst (DOC) and Selective Catalytic Reduction (SCR) using DEF	
Displacement	4 / 4.5 L	6 / 6.8 L
TRANSMISSION		
16 Speed PowrQuad Transmission 30K (OOS Only)	x	x
20 Speed PowrQuad Transmission 40K (OOS Only)	N/A	x
24 Speed PowrQuad Transmission 40K (OOS Only)	x	N/A
16 Speed PowrQuad PLUS™ Transmission 30K (Cab Only)	x	x
20 Speed PowrQuad PLUS Transmission 40K (Cab Only)	N/A	x
24 Speed PowrQuad PLUS Transmission 40K (Cab Only)	x	N/A
20 Speed AutoQuad PLUS™ Transmission 40K (Cab Only)	N/A	x
24 Speed AutoQuad PLUS Transmission 40K (Cab Only)	x	N/A
ELECTRICAL SYSTEM		
Alternator/Battery	14V, 120 amps (14V, 200 amp Optional)/12V	
REAR AXLES AND WHEEL EQUIPMENT		
Flanged axle, 8 position adjustable steel wheels	Group 46/47 Base	Group 46/47 Base
86 x 2550 mm (3.385 x 100.4 in.) with 2-Position Fixed Cast Wheels	Option	Option
FRONT AXLES		
2WD – tread range 60.4 to 80.4 in. (1534 to 2042 mm)	Option	N/A
2WD – tread range 63.3 to 87.4 in. (1610 to 2220 mm)	N/A	Option
MFWD - Adjustable rims	Base	Base
HYDRAULIC SYSTEM		
Selective control valves (rear/mid)	Pressure Compensated (PC) / Pressure & Flow Compensated (PFC) System with Load Sensing Function (option) up to 3 rear mechanical or 3 with powerbeyond / 3 mid mount mechanical	Pressure & Flow Compensated (PFC) System with Load Sensing Function
Main pump, axial piston (displacement)	35cc	45cc
Maximum pressure	2,900 psi (20,000 kPa)	
Rated flow	21.1 U.S. gpm (80 L/min)	30 U.S. gpm (114 L/min)
Available flow at a single SCV	21.1 U.S. gpm/80 lpm	26.4 U.S. gpm (100 L/min)
Take out oil capacity without/with additional tank	6.6/9.8 gal. (25/37 liters)	9.2/12.4 gal. (35/47 liters)
3-POINT HITCH (rear) - Electrohydraulic Sensing		
Lift Capacities - Standard	8,456 lb. (3800 kg)	8,198 lb. (3700 kg)
Lift Capacities - Optional	9,546 lb. (4300 kg)	9,193 lb. (4200 kg)
DRAWBAR		
	Cat 2 1400 kg (3085 lb.) - 2450 kg (5400 lb.) Maximum Vertical Load dependent on drawbar position - Standard	
PTO		
PTO Speed @ Engine RPM	540 rpm @ 1932 engine rpm 1000 rpm @ 1932 engine rpm	
Front Hitch and PTO	NA	NA
CAPACITIES		
Fuel Tank, Standard	70 gal. (265L)	71 gal. (270L)
DEF Tank	4 gal. (16L)	4 gal. (16L)
Cooling System	7 gal. (27L)	7.4 gal. (28.2L)
WHEELBASE		
2WD	108.9 in. (2765 mm)	108.9 in. (2765 mm)
MFWD	108.9 in. (2765 mm)	108.9 in. (2765 mm)
MFWD axle ground clearance with standard MFWD tyres	20.47 in. (520 mm)	20.47 in. (520 mm)
AVERAGE STANDARD WEIGHT less front weights		
MFWD/AQ Plus/TLS/drawbar/base weight	12,200 lbs. (5534 kg.)	13,073 lbs (5930 kg)
Max Ballast Level		
Max Payload Capacity	22,046 lbs. (10000 ka)	24,250 lbs. (11000 ka)

* 97/68/EC power refers to average [50% MOE] net brake power measured and corrected for ambient conditions according to the EC emissions directive. It is equivalent to internal Deere Standard RES10080, and SAE Standards J1349, J1995. Nominal data is metric. Standard data is converted from metric data. Use metric for all calculations

The 175 and 195 horsepower 6M Series are ready to stand up to the challenge.

If you need to bring the muscle, the large-chassis 6M has a can do attitude ... and the numbers to back it up.

That starts with a hard-hitting 6.8 liter, 6 cylinder John Deere PowerTech engine that features a power bulge to meet rising demands. Coupled with a hitch-lift capacity of up to 10,582 pounds (4799 kg), PTO muscle of 158 horsepower, you'll tear through work, even when jobs are at their hardest.

Up front, 30 gpm (114 lpm) of pressure-and-flow compensated hydraulic power lets you breeze through large loading chores and cycle through big jobs with ease.

The 6175M and 6195M are available with MFWD and cab configurations.



Prepared for precision: The 6M is ready for hands-free guidance. Just go for the optional, factory installed StarFire™ receiver and AutoTrac™ Universal ... you'll reduce overlap, work faster, and improve productivity.

For big jobs, demand big power

The toughest planting, tillage and livestock chores have met their match.

Get the perfect combination of big performance and utility tractor versatility with the large-chassis 6M.

6175M | 6195M



6175M | 6195M Series Specifications



	6175M	6195M
POWER * estimated		
Rated PTO power (hp SAE) at rated engine speed (2100 rpm)	142 hp (106 kW)	158 hp (117 kW)
Rated Engine power hp (hp ISO) at 2100 engine rpm (97/68EC)*	175 hp (129 kW)	195 hp (145 kW)
Max Engine power hp (hp ISO) at 1900 engine rpm (97/68EC)*	185 hp (136 kW)	206 hp (151 kW)
ENGINE		
Manufacturer	John Deere PowerTech™ PVS (B20 Diesel Compatible)	John Deere PowerTech™ PSS (B20 Diesel Compatible)
Rated Speed	2100 rpm	
Type	Diesel, in-line, 6-cylinder, wet-sleeve cylinder liners with 4 valves-in-head	
Aspiration	(US EPA Final Tier4/Stage IV) Variable Geometry Turbocharger second stage - air-to-air aftercooling and cooled exhaust gas recirculation	Dual Series Turbocharger w/fixed geometry first stage-variable geometry second stage - air-to-air aftercooling and cooled exhaust gas recirculation
Filter, engine air	PowerCore G2 Air Filter with Pre-cleaning	
After treatment type	Cooled exhaust gas recirculation (EGR), Diesel Particle Filter (DPF) with Diesel Oxidation Catalyst (DOC) and Selective Catalytic Reduction (SCR) using DEF	
Displacement	6 / 6.8 L	
TRANSMISSION		
16 Speed PowrQuad PLUS™ Transmission 30K (Cab Only)	x	x
20 Speed PowrQuad PLUS Transmission 40K (Cab Only)	x	x
20 Speed AutoQuad PLUS™ Transmission 40K (Cab Only)	x	x
20 Speed CommandQuad PLUS™ Transmission 40K (Cab Only)	x	x
ELECTRICAL SYSTEM		
Alternator/Battery	14V, 120 amps (14V, 200 amp Optional)/12V	
REAR AXLES AND WHEEL EQUIPMENT		
92 x 2550 mm (3.622 x 100.4 in.) with 2-Position Fixed Cast Wheels	Group 46/47 Base	Group 46/47 Base
FRONT AXLES		
2WD – tread range 63.3 to 87.4 in. (1610 to 2220 mm)	Option	Option
MFWD - Adjustable rims	Base	Base
HYDRAULIC SYSTEM		
Selective control valves (rear/mid)	Pressure & Flow Compensated (PFC) System with Load Sensing Function	
Main pump, axial piston (displacement)	45cc	
Maximum pressure	2,900 psi (20,000 kPa)	
Rated flow	30 U.S. gpm (114 L/min)	
Available flow at a single SCV	26.4 U.S. gpm (100 L/min)	
Take out oil capacity without/with additional tank	9.2/12.4 gal. (35/47 liters)	
3-POINT HITCH (rear) - Electrohydraulic Sensing		
Lift Capacities - Standard	10,696 lb. (4850 kg)	10,696 lb. (4850 kg)
Lift Capacities - Optional	n/a	n/a
DRAWBAR		
	Cat 2 1400 kg (3085 lb.) - 2450 kg (5400 lb.) Maximum Vertical Load dependent on drawbar position - Standard	
PTO		
PTO Speed @ Engine RPM	Independent 1-3/8 in., 540/1000 reversible shaft 540 rpm @ 1932 engine rpm 1000 rpm @ 1932 engine rpm	
Front Hitch and PTO	Option	Option
CAPACITIES		
Fuel Tank, Standard	85 gal. (325L)	85 gal. (325L)
DEF Tank	5 gal. (20L)	5 gal. (20L)
Cooling System	6 gal. (23.2L)	6 gal. (23.2L)
WHEELBASE		
2WD	110.2 in. (2800 mm)	110.2 in. (2800 mm)
MFWD	110.2 in. (2800 mm)	110.2 in. (2800 mm)
MFWD axle ground clearance with standard MFWD tyres	20.47 in. (520 mm)	20.47 in. (520 mm)
AVERAGE STANDARD WEIGHT less front weights		
MFWD/AQ Plus/TLS/drawbar/base weight	15,664 lbs. (7105 kg)	15,664 lbs. (7105 kg)
Max Ballast Level		
Max Payload Capacity	27,116 lbs. (12300 kg)	27,116 lbs. (12300 kg)

* 97/68/EC power refers to average (50% MOE) net brake power measured and corrected for ambient conditions according to the EC emissions directive.

It is equivalent to internal Deere Standard RES10080, and SAE Standards J1349, J1995. Nominal data is metric. Standard data is converted from metric data. Use metric for all calculations

John Deere and Frontier Equipment: *The Perfect Fit*

Stacking bales, moving pallets, cleaning pens, hauling brush... the 6M Series Tractors can get the job done. But to do the job right, you need the right implements. That's where John Deere and Frontier Equipment can help.

With a complete line of tools covering a wide array of jobs, Frontier Equipment is your first and last stop for front- or rear-mounted implements and attachments.

Stop by your John Deere dealer, or visit us online to find out more about our complete line of implements from John Deere and Frontier Equipment, including:

Box blades

Overseeders

Rotary rakes

Soil pulverizers

Manure spreaders

Disc mowers

Core aerators

Offset disks

Wood chippers

Bale huggers

Bale spears

Rotary cutters

Rotary tillers

Disks

Sickle mowers

Posthole diggers

Wheel rakes

Rear blades

Grooming mowers

Tedders

Snowblowers

Bale wrapper

Food plot seeders

Land planes





1. Handle large round bales with a 6M Tractor and a Frontier Equipment Bale Carrier. BC1108 Bale Carrier shown.

2. Make cleanup easy with a Frontier LP1196 Land Plane.

3. Save money by grinding and mixing your own feed with a 6M Tractor and a Frontier Equipment Grinder Mixer. GX1117 Grinder Mixer shown.

4. Move, stack and transport round bales easily with a wide selection of front and rear bale spears from Frontier. You can get single- and double-tine bale spears.



John Deere PowerGard™[‡] Protection Plan

All John Deere tractors come with a 24 total month/2,000 total hour factory basic limited warranty.** For greater control over the unexpected, it pays to check out our PowerGard Protection Plans. A broad range of plans are available to match your usage, trade cycles, and budget.

See your dealer for pricing and details, or go online to www.powergard.com or www.powergard.ca.

Time tested, farmer approved

Producers around the world know we work to help them succeed, making John Deere a trusted name in agricultural equipment. They know they can rely on our products, service, and support.

When you invest in a John Deere, you get more than the latest tractor technology. You get the support of your John Deere dealer. Whether you need routine service and parts, in-field repair... or just some friendly advice, John Deere and your local dealer are committed to your success. Your success is our success... and it's been that way for 175 years.

**Warranty coverage includes both parts and labor when your dealer installs the component on your machine, otherwise the coverage is for parts only. See your dealer or www.deere.com or deere.ca for details. Hour and/or usage limitations apply and vary by model. See the WARRANTY FOR NEW JOHN DEERE TURF AND UTILITY EQUIPMENT at dealer for details.

‡PowerGard Protection Plan extended warranty covers failures due to defective materials or original workmanship of covered components. Customers have a choice between either the Limited (engine & powertrain) coverage form or the Comprehensive (full-machine) coverage form. See your dealer or www.deere.ca/powergard.ca for details.



The system that grows with you.

With the 6M Series you can choose from a broad range of optional John Deere Precision Ag and location-based applications designed to meet the needs of a growing operation. That includes GreenStar guidance, documentation, monitoring and ISOBUS capabilities. Your choice starts with the GreenStar display. Choose the GS3 2630 Display and you get immediate access to basic documentation, on-screen mapping, manual guidance, and section control for select John Deere implements. With the 2630 Display, you'll also get touch-screen access to advanced documentation and performance monitoring, plus advanced implement and tractor guidance.



Add More

Performance, muscle, comfort, convenience and versatility.

Tackle any job, anytime, anywhere with John Deere attachments on your 6 Family of tractors. Need access to important documents while you're out in the field? Get our Field Office™ and add more organization to your workday. Looking to add more protection to your tractor investment? Consider adding a hood guard, or new front fenders. Regardless of the task at hand, John Deere attachments fit every need and add more potential to what you can do.

Read on to discover the latest in John Deere attachments, then visit your John Deere dealer to take a look at the genuine John Deere parts that keep your tractor running strong. Then, visit your local John Deere dealer to find out how you can Add More value to your tractor.

Not enough time in your day?

 **Add more.**

Optional LED lighting technology provides daytime color output for improved night-time illumination and field definition. Plus, LED bulbs have a significantly longer service life compared to hallogen bulbs, and reduce drain on the battery and alternator.



Add more comfort, convenience, security, productivity ...

Set your tractor up just the way you want by adding quality John Deere attachments. Plus, when it comes time to trade or sell, your investment could be worth more. This is just a sampling of the attachments available for the 6M Series Tractors.

See your John Deere dealer for all your parts and attachments needs.



Instructional Seat

Retractable seat belt bolts securely to the cab. Seat features rear netting for additional cab storage.



Door locks

The door lock kit features a new handle and high-security dedicated cab door key that is different from the standard ignition key.



Lockable fuel and DEF caps

Protect yourself against vandalism or theft. Caps are designed to fit on current and previous tractor models.



Electrical cooling compartment

No matter how long you're in the field, this refrigerator – with a 5 liter capacity – will keep your food and drinks cool. There is an on-off switch, but the fridge runs only if the tractor is on.



Accessory mounting bracket kit

The new mounting bracket kit allows the operator to mount, adjust and position key controls and displays within the cab for maximum accessibility without compromising visibility. Shown with Cell Phone Mount and Tablet Mount Kits.

Rear wheel weights

Keep your tractor balanced for better stability and improved traction when using front loaders.

Part numbers and applications:

- L28228: Rear Wheel Weight 121 Lb. (55 Kg)
- R167153: Starter Weight, Wheel, 159 Lb. (72 Kg)
- R56920: Rear Wheel Weight, 110 Lb. (50 Kg)
- R207782: Rear Wheel Weight, 450lb. (204 Kg)

FieldOffice™

The FieldOffice provides a place for everything, all within your reach and it's removable so you can take valuable contents with you when you go.



Windshield washer & wiper kits

Keep the job at hand in clear sight with John Deere washer and wiper kits. They help keep the cab glass clean and clear in dusty and wet conditions.





Tool box

This lockable tool box with a convenient carrying handle holds tools and a selection of linkage balls, hitch and lynch pins for implement attachment

Front fenders

Made from durable rubber, these fenders will outlast the harshest conditions to protect and keep your tractor clean. The John Deere logo adds the right amount of style. (Not compatible with tractors equipped with front loaders.)



AM/FM CD radio

Stay current on crop prices or enjoy your favorite CD or radio show with powerful frequency reception. These high-quality radios are built tough to handle the grit and grime of life in the field.



Beacon lights

Being visible to others on the road is important. John Deere beacon light kits bring on-road visibility to a whole new level. For your convenience, a cab-mounted rocker switch turns the light on and off.

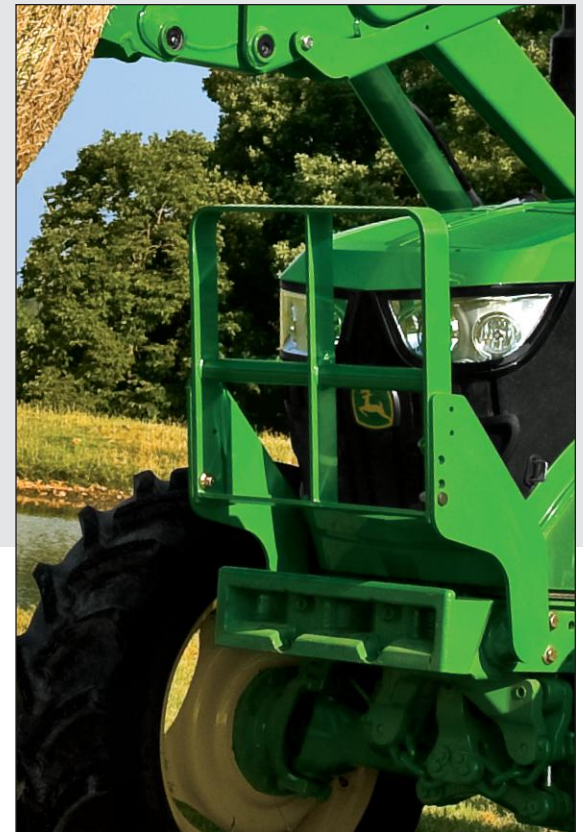


Tractor utility box

With loads of capacity, two removable shelves and innovative front door and lid design, this new tractor utility box breaks new ground for convenience, versatility and rugged design.

Hood guards

Protect your investment and your pocket book from potentially costly repairs by installing a John Deere hood guard. Built to withstand tough daily chores, the hood guard provides protection from tough conditions and potential operational mishaps.



You have a loyal sidekick. So should your operation.



As you face the demands of your day, it's good to have company you can count on. You can rely on us when you need financing for your operation. With John Deere Financial, you have a trusted resource that gives you many options to choose from.

At the end of the day — and every day forward — we'll be there at your side.



U.S.A. www.JohnDeereFinancial.com | Canada www.JohnDeereFinancial.ca



This literature has been compiled for worldwide circulation. While general information, pictures, and descriptions are provided, some illustrations and text may include finance, insurance, product options and accessories NOT AVAILABLE in all regions. PLEASE CONTACT YOUR LOCAL DEALER FOR DETAILS. John Deere reserves the right to change specification, design and price of products described in this literature without notice. John Deere, the leaping deer symbol, and John Deere's green and yellow trade dress are the trademarks of Deere & Company.

DSAA66571 Litho in U.S.A. (16-05)

JohnDeere.com/Ag | JohnDeere.ca/Ag

