



2017 Product Guide



Frontier Equipment



More than 600 tools for meeting your challenges

Few things are more satisfying than reaching into your toolbox and finding just the right tool for the job. That's the same feeling you get from the expansive line of Frontier Equipment, with more than 600 implements and attachments – and counting. Whether you farm or ranch on a large or small scale, are a landscape contractor with a few crews or multiple locations, or you simply have property you need to maintain, we have just the right products for getting the job done.

Browse through our product guide to see how we can make your operation more efficient and convenient. And then visit your local John Deere dealer, the only place you will find Frontier Equipment.

Contents

Landscape Equipment

Box Blades, Rear Blades	5
3-Point Trenchers, Box Blades – Hydraulic Scarifiers, Box Scrapers, Post Hole Augers, Post Hole Diggers	6
Core Aerators, Land Planes, Soil Pulverizers, Wood Chippers	7
3-Point Debris Blower, Landscape Rakes, Power Rakes, Power Rake Seeder Attachments	8

Tillage Equipment

Disks, Heavy Offset Disks	10
3-Point Offset Disks, Rotary Tillers, Row-Crop Tillers, Tandem Disks	11
Field Cultivator, Middle Buster, Mulch Finishers, One-Row Cultivator, Plows, Subsoiler	12

Planting and Seeding Equipment

Conservation Seeders, End-Wheel Grain Drills, Food Plot Seeders, Overseeders	14
Broadcast Spreaders, Pendular Spreaders	15

Cutting and Mowing Equipment

Flex-Wing Grooming Mowers, Grooming Mowers, Rotary Cutters	17
--	----

Hay and Forage Equipment

Carted Wheel Rakes, Heavy-Duty Wheel Rake, High-Capacity Carted Wheel Rakes, High-Capacity Wheel Rakes	19
Disc Mowers, Disc Mower Caddy, Hay Tedders, Rotary Rakes	20
Bale Carriers, Hay Mergers, Inline Bale Wrappers, Sickle Bar Mowers	21
3-Point Bale Handling, Bale Spears, Round-Bale Hugger, Small Square-Bale Fork	22
Large Square Bale Squeeze	23

Cotton Equipment

Cotton Module Handler	24
-----------------------	----

Header Transport Equipment

Combine Header Transports	25
---------------------------	----

Livestock and Equine Equipment

Chain-Unloading Manure Spreaders, Hydraulic-Push Manure Spreaders, Side-Discharge Manure Spreaders	27
Free-Stall Scrapers, Grinder-Mixer, Manure Forks with Grapple	28

Snow Removal Equipment

3-Point Snowblowers	29
Front Blades, Hydraulic Power Packs, Loader-Mount Rotary Brooms, Loader-Mount Snowblowers, Snow Push	30

Material Handling Equipment (Loader Attachments)

Bale Spears, Pallet Forks, Round-Bale Hugger	32
Debris Grapples, Manure Forks with Grapple, Silage Defacer, Small Square-Bale Fork	33
4-In-1 Buckets, Free-Stall Scrapers, Rock Buckets, Root Grapples	34
Hydraulic Power Packs, Loader-Mount Debris Blower, Loader-Mount Rotary Brooms, Loader-Mount Snowblowers	35
Front Blades, Large Square Bale Squeeze, Snow Push	36

Government and Commercial Equipment

Box Blades-Hydraulic Scarifiers, Drawn Box Scrapers, Land Planes, Rear Blades	38
Flex-Wing Grooming Mowers, Power Rakes, Power Rake Seeder Attachments, Sickle Bar Mowers	39
Core Aerators, Landscape Rakes, Grooming Mowers, Loader Attachments	40
3-Point Debris Blower, Conservation Seeders, End-Wheel Grain Drills, Overseeders	41
3-Point Snowblowers, Broadcast Spreaders, Hydraulic Power Packs, Loader-Mount Snowblowers, Pendular Spreaders	42
Hydraulic Power Packs, Loader-Mount Debris Blower, Loader-Mount Rotary Brooms	43

Landscape Equipment



Rugged products that make the grade



Rear Blades

Put your gardening, landscaping, driveway, and ditch-maintenance chores behind you with a sturdy Rear Blade.

- Easy adjustment simplifies grading and leveling
- iMatch™ or Quick-Coupler compatible

Model	Duty / Working Width	PTO HP ²	Hitch
RB5048L	Economy / 48 in. (121.9 cm)	18 hp (13.4 kW) maximum	Ltd. Cat. 1
RB5060L	Economy / 60 in. (152.4 cm)	18 hp (13.4 kW) maximum	Ltd. Cat. 1
RB2060L	Economy / 60 in. (152.4 cm)	25 hp (18.6 kW) maximum	Ltd. Cat. 1
RB2060	Standard / 60 in. (152.4 cm)	19 - 45 hp (14.1 - 33.6 kW)	Cat. 1
RB5060	Standard / 60 in. (152.4 cm)	20 - 56 hp (14.9 - 41.8 kW)	Cat. 1
RB2160 ²	Medium / 60 in. (152.4 cm)	65 hp (48.5 kW) maximum	Cat. 1
RB2160H ²	Standard Plus / 60 in. (152.4 cm)	50 hp (37.3 kW) maximum	Cat. 1
RB2072	Standard / 72 in. (182.9 cm)	23 - 55 hp (17.1 - 41.0 kW)	Cat. 1
RB5072	Standard / 72 in. (182.9 cm)	20 - 56 hp (14.9 - 41.8 kW)	Cat. 1
RB2172 ²	Medium / 72 in. (182.9 cm)	65 hp (48.5 kW) maximum	Cat. 1
RB2172H ²	Standard Plus / 72 in. (182.9 cm)	65 hp (48.5 kW) maximum	Cat. 1
RB2272 ²	Medium Plus / 72 in. (182.9 cm)	80 hp (59.6 kW) maximum	Cat. 2
RB2084	Standard / 84 in. (213.4 cm)	27 - 55 hp (20.1 - 41.0 kW)	Cat. 1
RB5084	Standard / 84 in. (213.4 cm)	20 - 56 hp (14.9 - 41.8 kW)	Cat. 1
RB2184 ²	Medium / 84 in. (213.4 cm)	65 hp (48.5 kW) maximum	Cat. 1
RB2184H ²	Standard Plus / 84 in. (213.4 cm)	50 hp (37.3 kW) maximum	Cat. 1
RB2284 ²	Medium Plus / 84 in. (213.4 cm)	80 hp (59.6 kW) maximum	Cat. 2
RB2307 ^{1,2}	Heavy / 84 in. (213.4 cm)	120 hp (89.5 kW) maximum	Cat. 2
RB5096	Standard / 96 in. (243.8 cm)	20 - 56 hp (14.9 - 41.8 kW)	Cat. 1
RB2308 ^{1,2}	Heavy / 96 in. (243.8 cm)	120 hp (89.5 kW) maximum	Cat. 2
RB2196 ²	Medium / 96 in. (243.8 cm)	65 hp (48.5 kW) maximum	Cat. 1
RB2196H ²	Standard Plus / 96 in. (243.8 cm)	50 hp (37.3 kW) maximum	Cat. 1
RB2296 ²	Medium Plus / 96 in. (243.8 cm)	80 hp (59.7 kW) maximum	Cat. 2
RB2408 ^{1,2}	Heavy Plus / 96 in. (243.8 cm)	160 hp (119.3 kW) maximum	Cat. 2 and 3
RB2309 ^{1,2}	Heavy / 108 in. (274.3 cm)	120 hp (89.5 kW) maximum	Cat. 2
RB2409 ^{1,2}	Heavy Plus / 108 in. (274.3 cm)	160 hp (119.3 kW) maximum	Cat. 2 and 3
RB2310 ^{1,2}	Heavy / 120 in. (304.8 cm)	120 hp (89.5 kW) maximum	Cat. 2
RB2410 ^{1,2}	Heavy Plus / 120 in. (304.8 cm)	160 hp (119.3 kW) maximum	Cat. 2 and 3

¹Hydraulic tilt, angle, and offset function available ²Reduce the hp requirement by 10 hp if the tractor has MFWD



Box Blades

Frontier Box Blades level uneven ground and simplify grading tasks.

- Tailgate can be fixed or float
- Shanks are easily replaceable
- iMatch and/or Quick-Coupler compatible

Model	Working Width	PTO HP	Hitch
BB2048L	48 in. (121.9 cm)	25 hp (18.6 kW) maximum	Cat. 0 / Ltd. Cat. 1
BB2048	48 in. (121.9 cm)	45 hp (33.5 kW) maximum	Cat. 1
BB5048L	48 in. (121.9 cm)	18 hp (13.4 kW) maximum	Ltd. Cat. 1
BB2060	60 in. (152.4 cm)	55 hp (41 kW) maximum	Cat. 1
BB5060L	60 in. (152.4 cm)	18 hp (13.4 kW) maximum	Ltd. Cat. 1
BB5060	61.5 in. (156.2 cm)	17 - 56 hp (12.8 - 41.8 kW) maximum	Cat. 1
BB2065	66 in. (167.6 cm)	55 hp (41.0 kW) maximum	Cat. 1
BB2072	72 in. (182.9 cm)	55 hp (41.0 kW) maximum	Cat. 1
BB2172	72 in. (182.9 cm)	70 hp (52.2 kW) maximum	Cat. 1
BB3272	72 in. (182.9 cm)	80 hp (59.6 kW) maximum	Cat. 1 and 2
BB5072	73.5 in. (186.7 cm)	56 hp (41.8 kW) maximum	Cat. 1
BB2184	84 in. (213.4 cm)	70 hp (52.2 kW) maximum	Cat. 1
BB3284	84 in. (213.4 cm)	80 hp (59.6 kW) maximum	Cat. 1 and 2
BB5084	85.5 in. (217.2 cm)	56 hp (41.8 kW) maximum	Cat. 1
BB3296	96 in. (243.8 cm)	80 hp (59.6 kW) maximum	Cat. 1 and 2
BB5096	97.5 in. (247.7 cm)	56 hp (41.8 kW) maximum	Cat. 1

Landscape Equipment



Box Blades – Hydraulic Scarifiers

Prepare even really tough soil for planting, landscaping, or construction projects with a Box Blade and Hydraulic Scarifier. They are ideal for shattering and conditioning soil on the farm, roadside, and construction sites.

- Hydraulically operated scarifier bar
- Heat-treated scarifier points for long work life
- Tough tubular scarifier beam
- iMatch and/or Quick-Coupler compatible

Model	Working Width	PTO HP	Hitch
BB4160 ¹	60 in. (152.4 cm)	50 hp (37.3 kW) maximum	Cat. 1
BB4166 ¹	66 in. (167.6 cm)	50 hp (37.3 kW) maximum	Cat. 1
BB4172 ¹	72 in. (182.9 cm)	50 hp (37.3 kW) maximum	Cat. 1
BB4178	78 in. (198.1 cm)	90 hp (67.1 kW) maximum	Cat. 1 and 2
BB4278	78 in. (198.1 cm)	90 hp (67.1 kW) maximum	Cat. 1 and 2
BB4284	84 in. (213.4 cm)	90 hp (67.1 kW) maximum	Cat. 1 and 2
BB4184	84 in. (213.4 cm)	90 hp (67.1 kW) maximum	Cat. 1 and 2
BB4196	96 in. (243.8 cm)	90 hp (67.1 kW) maximum	Cat. 1 and 2
BB4296	96 in. (243.8 cm)	90 hp (67.1 kW) maximum	Cat. 1 and 2

¹Available in green only. Others in green and construction yellow.



3-Point Trencher

Dig uniform trenches for any small drainage or utility project with the 3-Point Trencher. Just hitch up to a compact tractor and go.

- Chain-type digging model
- 6 in. wide x 36 in. deep (.2 m x .9 m) maximum trench
- Adjustable depth control

Model	Auger Length	PTO HP	Hitch
DT1136	14 in. (35.6 cm)	15 - 30 hp (11.2 - 22.4 kW) Hydrostatic Transmission Only	Cat. 1



Box Scrapers

Box Scrapers smooth driveways, yards, and fields. These heavy-duty scrapers stand up to your really tough jobs.

- Drawbar and single SCV compatibility
- Optional notched cutting edge for hard soil
- Rear attachments optional

Model	Working Width	PTO HP	Drawn
LL1160	5 ft. (1.5 m)	20 - 50 hp (14.9 - 37.3 kW)	Pull-Type / Clevis
LL1172	6 ft. (1.8 m)	20 - 50 hp (14.9 - 37.3 kW)	Pull-Type / Clevis
LL1208	8 ft. (2.4 m)	35 - 100 hp (26.1 - 74.6 kW)	Pull-Type / Clevis
LL1210	10 ft. (3.0 m)	35 - 125 hp (26.1 - 93.2 kW)	Pull-Type / Clevis
LL1212	12 ft. (3.7 m)	35 - 125 hp (26.1 - 93.2 kW)	Pull-Type / Clevis
LL1372	6 ft. (1.8 m)	35 - 100 hp (26.1 - 74.6 kW)	Pull-Type / Clevis
LL1384	7 ft. (2.1 m)	35 - 125 hp (26.1 - 93.2 kW)	Pull-Type / Clevis
LL1396	8 ft. (2.4 m)	35 - 125 hp (26.1 - 93.2 kW)	Pull-Type / Clevis



Post Hole Diggers/Augers

Drill down quickly and deeply, on the farm or on the jobsite, with a Post Hole Digger.

- 2 in. (5.1 cm) output shaft in gearbox
- Heavy-duty shielded PTO shaft

Model	Auger Length	PTO HP	Hitch
PHD100	36 in. (91.4 cm)	15 - 25 hp (10.8 - 18.6 kW)	Cat. 1
PHD200	48 in. (121.9 cm)	18 - 40 hp (13.4 - 29.8 kW)	Cat. 1
PHD300	48 in. (121.9 cm)	18 - 50 hp (13.4 - 37.3 kW)	Cat. 1 and 2
PHD400	48 in. (121.9 cm)	40 - 90 hp (29.8 - 67.1 kW)	Cat. 1 and 2

Augers

Model	Compatible With	Diameter
PHA006	PHD100	6 in. (15.2 cm)
PHA009	PHD100	9 in. (22.9 cm)
PHA012	PHD100	12 in. (30.5 cm)
PHA106	PHD200 / 300 / 400	6 in. (15.2 cm)
PHA109	PHD200 / 300 / 400	9 in. (22.9 cm)
PHA112	PHD200 / 300 / 400	12 in. (30.5 cm)
PHA118	PHD300 / 400	18 in. (45.7 cm)
PHA124	PHD300 / 400	24 in. (61.0 cm)
PHA130	PHD300 / 400	30 in. (76.2 cm)



Land Planes

Level driveways, fill potholes, or recondition gravel areas with the all-purpose Land Planes. Durable frame allows you to smooth over challenging terrain. Heavy-duty options available.

- Pull-type or 3-point-hitch-mounted models
- Two cutting edges promote ground leveling
- Optional adjustable scarifier shanks (LP12 Series only)
- iMatch and/or Quick-Coupler compatible
- Adjustable skid shoes (LP12 Series only)

Model	Working Width	PTO HP	Hitch
LP1048	48 in. (121.9 cm)	20 hp (14.9 kW) maximum	1.875 in. ball (.05 m)
LP1060	60 in. (152.4 cm)	30 hp (22.3 kW) maximum	1.875 in. ball (.05 m)
LP1160	60 in. (152.4 cm)	18 - 50 hp (13.4 - 37.3 kW)	Cat. 1
LP1172	72 in. (182.9 cm)	18 - 50 hp (13.4 - 37.3 kW)	Cat. 1
LP1184	84 in. (213.4 cm)	22 - 75 hp (16.4 - 55.9 kW)	Cat. 1 and 2
LP1196	96 in. (243.8 cm)	22 - 75 hp (16.4 - 55.9 kW)	Cat. 1 and 2
LP1207	84 in. (213.4 cm)	35 - 75 hp (26.1 - 55.9 kW)	Cat. 1 and 2
LP1208	96 in. (243.8 cm)	50 - 95 hp (37.3 - 59.7 kW)	Cat. 1 and 2
LP1210	120 in. (304.8 cm)	50 - 105 hp (37.3 - 74.6 kW)	Cat. 2



Core Aerators

Keep your lawn, park, or golf course healthy with a Core Aerator. These tools help reduce soil compaction, and promote air, water, and nutrient circulation.

- Reduces compaction and increases soil vitality
- Two bronze bushings per rotor for wear resistance
- Penetrates to depth of 4.5 in. (11.4 cm)
- iMatch compatible

Model	Duty / Working Width	PTO HP	Hitch
CA2048E	Economy / 48 in. (121.9 cm)	20 - 50 hp (14.9 - 37.3 kW)	Cat. 1
CA2060E	Economy / 60 in. (152.4 cm)	20 - 50 hp (14.9 - 37.3 kW)	Cat. 1
CA2060	Economy / 60 in. (152.4 cm)	25 - 70 hp (18.6 - 52.2 kW)	Cat. 1 and 2
CA2072E	Economy / 72 in. (182.9 cm)	20 - 50 hp (14.9 - 37.3 kW)	Cat. 1
CA2072	Standard / 72 in. (182.9 cm)	25 - 70 hp (18.6 - 52.2 kW)	Cat. 1 and 2



Wood Chippers

Wood Chippers make big cleanup jobs fast and easy. They quickly chew up tree branches, turning them into wood chips or wood chip mulch.

- Gravity or hydraulic feed system
- Feed stop control bar with reverser (WC1205 & WC1208 only)
- iMatch and/or Quick-Coupler compatible (iMatch only on WC1103)

Model	Feed Opening	Limb	PTO HP	Hitch
WC1103	3 x 5.5 in. (7.6 x 14.0 cm)	3 in. (7.6 cm)	18 - 40 hp (13.4 - 29.8 kW)	Cat. 1
WC1105	5.5 x 8 in. (14.0 x 20.3 cm)	5 in. (12.7 cm)	25 - 85 hp (18.6 - 63.4 kW)	Cat. 1 and 2
WC1205	5.5 x 8 in. (14.0 x 20.3 cm)	5 in. (12.7 cm)	35 - 95 hp (26.1 - 70.8 kW)	Cat. 1 and 2
WC1208	9 x 16 in. (22.9 x 40.6 cm)	8 in. (20.3 cm)	75 - 115 hp (55.9 - 86 kW)	Pull-type



Soil Pulverizers

Sod growers, landowners, landscapers, and contractors can prepare soil for seeding or sodding with a Soil Pulverizer.

- Standard single roller with self-aligning 1 in. (2.5 cm) bearings
- Optional second roller with 80 lb. (36.3 kg) compression springs
- Rugged 10 in. (25 cm) H-beam design adds strength and operating weight
- iMatch compatible

Model	Duty / Working Width	PTO HP	Scarifier Teeth	Hitch
SP2048B	Standard / 48 in. (121.9 cm)	30 - 45 hp (22.3 - 33.6 kW)	Bar Type	Cat. 1
SP2060B	Standard / 60 in. (152.4 cm)	30 - 45 hp (22.4 - 33.6 kW)	Bar Type	Cat. 1
SP2072B	Standard / 72 in. (182.9 cm)	30 - 45 hp (22.4 - 33.6 kW)	Bar Type	Cat. 1
SP2272B	Heavy / 72 in. (182.9 cm)	30 - 70 hp (22.3 - 52.2 kW)	Bar Type	Cat. 1
SP2284B	Heavy / 84 in. (213.4 cm)	30 - 70 hp (22.3 - 52.2 kW)	Bar Type	Cat. 1

Landscape Equipment



Power Rakes

Versatile Power Rakes make it fast and convenient to cultivate, level, grade, or restore soil surfaces.

- Carbide tooth roller
- Manually adjustable rollback barrier
- Hydraulically adjustable angle
- iMatch compatible

Model	Working Width	PTO HP	Hitch
PR1148	Hydraulic / 48 in. (121.9 cm)	15 - 22 hp (11.2 - 16.4 kW)	Cat. 1
PR1160	Hydraulic / 60 in. (152.4 cm)	18 - 35 hp (13.4 - 26.1 kW)	Cat. 1
PR1172	Hydraulic / 72 in. (182.9 cm)	30 - 40 hp (22.4 - 29.8 kW)	Cat. 1
PR1184	Hydraulic / 84 in. (213.4 cm)	42 - 80 hp (31.3 - 59.6 kW)	Cat. 1 and 2



Landscape Rakes

Cleaning up and grooming landscape is simple with a Landscape Rake. From debris and brush removal to surface leveling and final seed preparation, this attachment is up to the challenge of tough landscaping jobs.

- Rugged tubular steel frame
- Long-lasting steel spring tines
- iMatch compatible

Model	Duty / Working Width	PTO HP	Hitch
LR5048L	Economy / 48 in. (121.9 cm)	18 hp (13.4 kW) maximum	Ltd. Cat. 1
LR2060L	Economy / 60 in. (152.4 cm)	25 hp (18.1 kW) maximum	Ltd. Cat. 1
LR5060L	Economy / 60 in. (152.4 cm)	18 hp (13.4 kW) maximum	Ltd. Cat. 1
LR5060	Standard / 60 in. (152.4 cm)	12 - 40 hp (8.9 - 29.8 kW)	Cat. 1
LR2072	Standard / 72 in. (182.9 cm)	19 - 40 hp (14.2 - 29.8 kW)	Cat. 1
LR5072	Standard / 72 in. (182.9 cm)	20 - 38 hp (14.9 - 28.3 kW)	Cat. 1
LR2172	Medium / 72 in. (182.9 cm)	23 - 55 hp (17.2 - 41.0 kW)	Cat. 1
LR2084	Standard / 84 in. (213.4 cm)	19 - 40 hp (14.2 - 29.8 kW)	Cat. 1
LR5084	Standard / 84 in. (213.4 cm)	20 - 50 hp (14.9 - 37.3 kW)	Cat. 1
LR2184	Medium / 84 in. (213.4 cm)	23 - 55 hp (17.2 - 41.0 kW)	Cat. 1
LR5096	Standard / 96 in. (243.8 cm)	20 - 50 hp (14.9 - 37.3 kW)	Cat. 1
LR2196	Medium / 96 in. (243.8 cm)	27 - 55 hp (20.1 - 41.0 kW)	Cat. 1



Power Rake Seeder Attachments

Reduce equipment, fuel, and labor costs with a Power Rake Seeder Attachment. You can level, till, and seed in just one pass.

- Attaches to Frontier PR1160 or PR1172 Power Rakes
- Standard roller basket ensures good seed to soil contact

Compatibility	Capacity	Working Width	Seed Rate
PR1160	3.75 bushel	60 in. (152.4 cm)	Adjustable
PR1172	4.5 bushel	72 in. (182.9 cm)	Adjustable



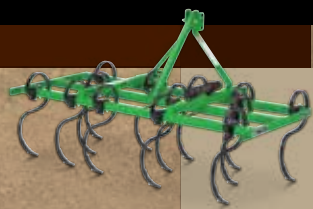
3-Point Debris Blower

Put the final touches on landscape projects with a 3-Point Debris Blower. It is ideal for quick cleanup of sidewalks, driveways, and golf courses.

- 141 mph (227 kph) maximum air velocity
- 6,000 CFM (169.9 m³/min) maximum air flow
- Discharge outlet is adjustable from side to side

Model	PTO HP	Hitch
BL1130	25 hp (18.6 kW) minimum	Cat. 1 and 2

Tillage Equipment



Working the land



Tillage Equipment



Disks

When it's time to work your land, Frontier Disks are built to handle a variety of unpredictable soil conditions.

- Notched or spherical blades available for aggressive or smooth cutting
- Adjustable front-to-rear leveling

Model	Working Width/ Front / Rear Blade Spacing	PTO HP	Hitch
DH1048	4 ft. (1.2 m) / 7.5 in. (19.1 cm) space ¹	14 - 28 hp (10.4 - 20.9 kW)	3-Pt. / Cat. 1 ²
DH1066	5 ft. 6 in. (1.7 m) / 7.5 in. (19.1 cm) space ¹	14 - 28 hp (10.4 - 20.9 kW)	3-Pt. / Cat. 1 ²
DH1166	5 ft. 6 in. (1.7 m) / 7.5 in. (19.1 cm) space ¹	22 - 45 hp (16.4 - 33.6 kW)	3-Pt. / Cat. 1 ²
DH1176	6 ft. 4 in. (1.9 m) / 9 in. (22.9 cm) space ¹	22 - 45 hp (16.4 - 33.6 kW)	3-Pt. / Cat. 1 ²
DH1180	6 ft. 8 in. (2.0 m) / 7.5 in. (19.1 cm) space ¹	22 - 45 hp (16.4 - 33.6 kW)	3-Pt. / Cat. 1 ²
DH1276	6 ft. 4 in. (1.9 m) / 9 in. (22.9 cm) space ¹	30 - 55 hp (22.4 - 41.0 kW)	3-Pt. / Cat. 1 ²
DH1280	6 ft. 8 in. (2.0 m) / 7.5 in. (19.1 cm) space ¹	30 - 55 hp (22.4 - 41.0 kW)	3-Pt. / Cat. 1 ²
DH1280	6 ft. 8 in. (2.0 m) / 9 in. (22.9 cm) space	30 - 55 hp (22.4 - 41.0 kW)	3-Pt. / Cat. 1 ²
DH1296	8 ft. (2.4 m) / 7.5 in. (19.1 cm) space ¹	30 - 55 hp (22.4 - 41.0 kW)	3-Pt. / Cat. 1 ²
DH1296	8 ft. (2.4 m) / 9 in. (22.9 cm) space ¹	30 - 55 hp (22.4 - 41.0 kW)	3-Pt. / Cat. 1 ²
DH1376	6 ft. 4 in. (1.9 m) / 9 in. (22.9 cm) space ¹	40 - 75 hp (29.8 - 55.9 kW)	3-Pt. / Cat. 1 and 2 ²
DH1380	6 ft. 8 in. (2.0 m) / 7.5 in. (19.1 cm) space ¹	40 - 75 hp (29.8 - 55.9 kW)	3-Pt. / Cat. 1 and 2 ²
DH1396	8 ft. (2.4 m) / 7.5 in. (19.1 cm) space ¹	40 - 75 hp (29.8 - 55.9 kW)	3-Pt. / Cat. 1 and 2 ²
DH1396	8 ft. (2.4 m) / 9 in. (22.9 cm) space ¹	40 - 75 hp (29.8 - 55.9 kW)	3-Pt. / Cat. 1 and 2 ²
DH1508	8 ft. (2.4 m) / 7.5 in. (19.1 cm) space ¹	35 - 55 hp (26.1 - 41.0 kW)	Drawn / Clevis
DH1508	8 ft. (2.4 m) / 9 in. (22.9 cm) space ¹	35 - 55 hp (26.1 - 41.0 kW)	Drawn / Clevis
DH1508	8 ft. (2.4 m) / 9 in. (22.9 cm) space ¹	35 - 55 hp (26.1 - 41.0 kW)	Drawn / Clevis
DH1509	9 ft. 6 in. (2.9 m) / 7.5 in. (19.1 cm) space ¹	40 - 65 hp (29.8 - 48.5 kW)	Drawn / Clevis
DH1509	9 ft. 6 in. (2.9 m) / 9 in. (22.9 cm) space ¹	40 - 65 hp (29.8 - 48.5 kW)	Drawn / Clevis
DH1509	9 ft. 6 in. (2.9 m) / 9 in. (22.9 cm) space ¹	40 - 65 hp (29.8 - 48.5 kW)	Drawn / Clevis
DH1510	10 ft. 6 in. (3.2 m) / 7.5 in. (19.1 cm) space ¹	45 - 75 hp (33.6 - 55.9 kW)	Drawn / Clevis
DH1510	10 ft. 6 in. (3.2 m) / 9 in. (22.9 cm) space ¹	45 - 75 hp (33.6 - 55.9 kW)	Drawn / Clevis
DH1510	10 ft. 6 in. (3.2 m) / 9 in. (22.9 cm) space ¹	45 - 75 hp (33.6 - 55.9 kW)	Drawn / Clevis
DH1512	12 ft. (3.7 m) / 7.5 in. (19.1 cm) space ¹	55 - 85 hp (41.0 - 59.7 kW)	Drawn / Clevis
DH1512	12 ft. (3.7 m) / 9 in. (22.9 cm) space ¹	55 - 85 hp (41.0 - 59.7 kW)	Drawn / Clevis
DH1512	12 ft. (3.7 m) / 9 in. (22.9 cm) space ¹	55 - 85 hp (41.0 - 59.7 kW)	Drawn / Clevis
DH1610	10 ft. 6 in. (3.2 m) / 9 in. (22.9 cm) space ¹	60 - 80 hp (44.7 - 59.7 kW)	Drawn / Clevis
DH1612	12 ft. (3.7 m) / 9 in. (22.9 cm) space ¹	75 - 115 hp (55.9 - 85.8 kW)	Drawn / Clevis
DH1613	13 ft. 6 in. (4.1 m) / 9 in. (22.9 cm) space ¹	75 - 125 hp (55.9 - 93.2 kW)	Drawn / Clevis
DH1615	15 ft. (4.6 m) / 9 in. (22.9 cm) space ¹	80 - 140 hp (59.7 - 104.4 kW)	Drawn / Clevis

¹Front and rear spacing is identical. ²Match and/or Quick-Coupler compatible



Heavy Offset Disks

Break up hard, fallow ground with a Heavy Offset Disk. Large, heavy-duty blades on rugged, reinforced frames provide ground breaking force, penetration, and high load absorption to withstand punishing tillage jobs.

- 240 to 868 lb. (108.9 to 393.7 kg) per blade
- Tapered roller gang bearings with oil bath lubrication
- Adjustable disk blade scrapers keep disk blades working in wet and sticky soils
- DH51 and DH52 Series feature 26 to 28 in. (66 to 71.1 cm) diameter disk blades (available in smooth or notched)
- DH53 Series features 28 to 32 in. (71.1 to 81.3 cm) diameter disk blades (available in notched only)
- DH54, DH55, and DH56 Series deliver 503 lb. to 868 lb. (228.2 to 393.7 kg) per blade
- Two independent control arms for transport and ground leveling

Model	Working Width	PTO HP	Hitch
DH5108	8 ft. (2.4 m) rigid	94 - 106 hp (71.6 - 79 kW)	Cast link
DH5110	10 ft. (3.0 m) rigid	106 - 129 hp (79 - 96.2 kW)	Cast link
DH5112	12 ft. (3.7 m) rigid	129 - 159 hp (96.2 - 118.6 kW)	Cast link
DH5114	14 ft. (4.3 m) rigid	165 - 188 hp (123 - 140.2 kW)	Cast link
DH5116	16 ft. (4.9 m) rigid	188 - 212 hp (140.2 - 158.1 kW)	Cast link
DH5210	10 ft. (3.0 m) rigid	118 - 141 hp (88 - 105.1 kW)	Cast link
DH5212	12 ft. (3.7 m) rigid	129 - 159 hp (96.2 - 118.6 kW)	Cast link
DH5214	14 ft. (4.3 m) rigid	147 - 182 hp (109.7 - 135.7 kW)	Cast link
DH5216	16 ft. (4.9 m) rigid	176 - 194 hp (131.2 - 144.7 kW)	Cast link
DH5217	17 ft. (5.2 m) rigid	188 - 212 hp (140.2 - 158.1 kW)	Cast link
DH5219	19 ft. (5.8 m) rigid	200 - 235 hp (149.1 - 175.2 kW)	Cast link
DH5221	21 ft. (6.4 m) rigid	212 - 247 hp (158.1 - 184.2 kW)	Cast link
DH5221F	21 ft. (6.4 m) folding	212 - 259 hp (158.1 - 193 kW)	Cast link
DH5222F	22 ft. (6.7 m) folding	224 - 282 hp (167 - 211 kW)	Cast link
DH5224F	24 ft. (7.3 m) folding	235 - 306 hp (175 - 228 kW)	Cast link
DH5308	8 ft. (2.4 m) rigid	118 - 153 hp (88 - 114.1 kW)	Cast link
DH5310	10 ft. (3.0 m) rigid	141 - 176 hp (105.1 - 131.2 kW)	Cast link
DH5312	12 ft. (3.7 m) rigid	165 - 200 hp (123 - 149.1 kW)	Cast link
DH5314	14 ft. (4.3 m) rigid	200 - 235 hp (149.1 - 175.2 kW)	Cast link
DH5316	16 ft. (4.9 m) rigid	212 - 247 hp (158.1 - 184.2 kW)	Cast link
DH5410	10 ft. (3.1 m)	175 - 225 hp (130.5 - 167.8 kW)	Cast link
DH5411	11 ft. (3.4 m)	200 - 225 hp (149.1 - 167.8 kW)	Cast link
DH5412	12 ft. (3.7 m)	225 - 250 hp (167.8 - 186.4 kW)	Cast link
DH5413	13 ft. (4.0 m)	275 - 300 hp (205.1 - 223.7 kW)	Cast link
DH5414	14 ft. (4.3 m)	300+ hp (223.7+ kW)	Cast link
DH5510	10 ft. (3.1 m)	200+ hp (149.1+ kW)	Cast link
DH5511	11 ft. (3.4 m)	225+ hp (167.8+ kW)	Cast link
DH5513	12 ft. 6 in. (3.8 m)	250+ hp (186.4+ kW)	Cast link
DH5514	13 ft. 9 in. (4.2 m)	300+ hp (223.7+ kW)	Cast link
DH5610	10 ft. (3.1 m)	225+ hp (167.8+ kW)	Cast link
DH5612	11 ft. 6 in. (3.5 m)	275+ hp (205.1+ kW)	Cast link
DH5613	13 ft. (4.0 m)	325+ hp (242.4+ kW)	Cast link
DH5615	14 ft. 6 in. (4.4 m)	350+ hp (261+ kW)	Cast link



Tandem Disks

Large producers and commercial operators want to cover a lot of ground in a hurry, and they can do just that with a Tandem Disk from Frontier Equipment. Large blades, deep penetration, and heavy-duty frames make even the largest projects manageable.

- Tapered roller gang bearings with oil bath lubrication
- Penetrates soil up to 9 in. (22.9 cm)
- 10.5 in. (26.7 cm) blade spacing
- 26 to 28 in. (66 to 71.1 cm) diameter disk blades (available in smooth, notched, or wavy)
- 265 to 370 lb. (120.2 to 167.8 kg) per blade

Model	Working Width	Drawbar HP	Hitch
TM5118	18 ft. (5.5 m) folding	160 - 180 hp (119.3 - 134.2 kW)	Cast link
TM5120	19 ft. 6 in. (6.1 m) folding	170 - 200 hp (126.8 - 149.1 kW)	Cast link
TM5121	21 ft. (6.4 m) folding	190 - 210 hp (141.7 - 156.6 kW)	Cast link
TM5124	23 ft. 6 in. (7.3 m) folding	220 hp (164 kW) minimum	Cast link
TM5129	29 ft. (8.8 m) folding	260 hp (194 kW) minimum	Cast link
TM5132	32 ft. (9.8 m) folding	280 hp (209 kW) minimum	Cast link



3-Point Offset Disks

Your land may be tough, but 3-Point Offset Disks are even tougher. As many as 24 notched disk blades enable you to level, cut, and mix soil to full working depth, all in one pass.

- High strength for adverse conditions
- Adjustable front and rear gang angles
- Optional adjustable blade scrapers for working in wet, sticky soil
- iMatch and/or Quick-Coupler compatible

Model	Working Width	PTO HP	Hitch
DH3263	5 ft. 3 in. (1.6 m)	30 - 75 hp (22.4 - 55.9 kW)	3-Pt. / Cat. 1 and 2
DH3272	6 ft. (1.8 m)	30 - 75 hp (22.4 - 55.9 kW)	3-Pt. / Cat. 1 and 2
DH3280	6 ft. 8 in. (2.0 m)	30 - 75 hp (22.4 - 55.9 kW)	3-Pt. / Cat. 1 and 2
DH3290	7 ft. 6 in. (2.3 m)	45 - 75 hp (33.6 - 55.9 kW)	3-Pt. / Cat. 1 and 2
DH3299	8 ft. 4 in. (2.5 m)	45 - 75 hp (33.6 - 55.9 kW)	3-Pt. / Cat. 1 and 2
DH3474	6 ft. 2 in. (1.9 m)	60 - 130 hp (44.7 - 96.9 kW)	3-Pt. / Cat. 2 and 3
DH3480	6 ft. 8 in. (2.0 m)	60 - 130 hp (44.7 - 96.9 kW)	3-Pt. / Cat. 2 and 3
DH3490	7 ft. 6 in. (2.3 m)	60 - 130 hp (44.7 - 96.9 kW)	3-Pt. / Cat. 2 and 3
DH3499	8 ft. 4 in. (2.5 m)	60 - 130 hp (44.7 - 96.9 kW)	3-Pt. / Cat. 2 and 3
DH3409	9 ft. (2.7 m)	60 - 130 hp (44.7 - 96.9 kW)	3-Pt. / Cat. 2 and 3



Row-Crop Tillers

Making multiple passes to prepare hard ground for planting can waste both time and money. Do the job in only one pass with an efficient Row-Crop Tiller. From specialized cropland to construction sites, these rugged tools help you break through heavy residue and compacted ground with ease.

- "L" blade type
- Helical-shaped rollers
- PTO shaft with slip clutch
- Oil cooler standard on RC13 Series
- Optional hydraulic tailgate kit for RC13 Series
- Optional side disk available
- Hydraulic cage roller adjustment available on RC22 & RC13 Series
- Quick-Coupler compatible

Model	Working Width	PTO HP	Hitch
RC2210	10 ft. 1 in. (3.1 m)	130 - 170 hp (96.9 - 126.8 kW)	3-Pt. / Cat. 2 or 3N
RC1310	10 ft. 1 in. (3.1 m)	180 - 255 hp (134.2 - 190.2 kW)	3-Pt. / Cat. 3N
RC1310R	10 ft. 1 in. (3.1 m)	180 - 255 hp (134.2 - 190.2 kW)	3-Pt. / Cat. 3N
RC1313	13 ft. 4 in. (4.1 m)	220 - 255 hp (164.1 - 190.2 kW)	3-Pt. / Cat. 3N
RC1313R	13 ft. 4 in. (4.1 m)	220 - 255 hp (164.1 - 190.2 kW)	3-Pt. / Cat. 3N



Rotary Tillers

Put the final touches on gardens or seedbeds before planting with a Rotary Tiller.

- "C" and/or "L" shaped blades, depending on model
- Helical-shaped rotors
- All models offer skid shoes for depth control
- iMatch and/or Quick-Coupler compatible

Model	Duty / Working Width	PTO HP	Hitch
RT1142	Standard / 42 in. (106.7 cm)	15 - 25 hp (11.2 - 18.6 kW)	3-Pt. / Cat. 0 and 1
RT1149	Standard / 49 in. (124.5 cm)	20 - 25 hp (14.9 - 18.6 kW)	3-Pt. / Cat. 1
RT1157	Standard / 57 in. (144.8 cm)	25 - 40 hp (18.6 - 29.8 kW)	3-Pt. / Cat. 1 and 2
RT1165	Standard / 65 in. (165.1 cm)	30 - 40 hp (22.4 - 29.8 kW)	3-Pt. / Cat. 1 and 2
RT1173	Standard / 73 in. (185.4 cm)	45 - 60 hp (33.6 - 44.7 kW)	3-Pt. / Cat. 1 and 2
RT1181	Standard / 81 in. (205.7 cm)	50 - 60 hp (37.3 - 44.7 kW)	3-Pt. / Cat. 2
RT1265	Medium / 65 in. (165.1 cm)	30 - 60 hp (22.4 - 44.7 kW)	3-Pt. / Cat. 1 and 2
RT1273	Medium / 73 in. (185.4 cm)	50 - 80 hp (37.3 - 59.7 kW)	3-Pt. / Cat. 2
RT2283	Medium / 83 in. (210.8 cm)	60 - 100 hp (44.7 - 74.6 kW)	3-Pt. / Cat. 2
RT2293	Medium / 93 in. (236.2 cm)	70 - 100 hp (52.2 - 74.6 kW)	3-Pt. / Cat. 2
RT2383	Heavy Duty / 83 in. (210.8 cm)	80 - 130 hp (59.7 - 96.9 kW)	3-Pt. / Cat. 2
RT2308	Heavy Duty / 102 in. (259.1 cm)	80 - 130 hp (59.7 - 96.9 kW)	3-Pt. / Cat. 2
RT2310	Heavy Duty / 121 in. (307.3 cm)	100 - 130 hp (74.6 - 96.9 kW)	3-Pt. / Cat. 2

Tillage Equipment



One-Row Cultivator

Control weeds with the One-Row Cultivator. Adjustable row widths make this tool valuable for gardeners and small farm operators.

- Six cultivator tines with 1.75 in. x 10 in. (4.5 cm x 25.4 cm) long reversible curved points
- Tine spacing is adjustable

Model	Row Width	PTO HP	Hitch
PC1001	30 - 60 in. (76.2 - 152.4 cm)	18 - 45 hp (13.4 - 33.6 kW)	3-Pt. / Cat. 1



Field Cultivator

Prepare seedbeds, mix crop residue into soil, and blend soil to provide water and nutrients to crops with a versatile Field Cultivator.

- 13 S-tines with optional tillage points for unsurpassed tillage action
- John Deere Parts offers optional shovels, sold separately
- iMatch compatible

Model	Working Width	PTO HP	Hitch
PC1072	72 in. (182.9 cm)	18 - 45 hp (13.4 - 33.6 kW)	3-Pt. / Cat. 1



Mulch Finishers

Seedbed preparation is a snap with Mulch Finishers. Choose from 6-, 8- or 12-disk blades to break through hard, layered soil.

- Vibrating S-tines ensure uniform tillage depth
- Three ground-management points are available. 9 in. (22.9 cm) sweeps are standard. Chisel spikes, and turning tips are available through John Deere Service Parts.
- Level seedbeds with an optional rolling basket
- iMatch and/or Quick-Coupler compatible

Model	Working Width	PTO HP	Hitch
MF2204	42 in. (106.7 cm)	30 - 50 hp (22.4 - 37.3 kW)	3-Pt. / Cat. 1
MF2206	60 in. (152.4 cm)	45 - 75 hp (33.6 - 55.9 kW)	3-Pt. / Cat. 1 and 2
MF2208	82 in. (208.3 cm)	60 - 100 hp (44.7 - 74.6 kW)	3-Pt. / Cat. 1 and 2



Middle Buster

Break up hard ground between garden rows with a convenient Middle Buster with a 15 x 11 in. (38.1 x 27.9 cm) double-wing cutting blade.

- Dig furrows for planting vegetables, digging potatoes or knocking out other small gardening chores
- iMatch compatible

Model	Working Depth	PTO HP	Hitch
PM1001	Up to 12 in. (30.5 cm)	18 - 45 hp (13.4 - 33.6 kW)	3-Pt. / Cat. 1



Subsoiler

Get higher yields from your garden with the handy Subsoiler. Featuring a 1 x 6 in. (2.5 x 15.2 cm) steel shank with reversible hitch point, this small tillage tool rips through hard ground to break up compaction, improving water drainage, and root growth.

- Standard duty for lower horsepower models

Model	Working Depth	PTO HP	Hitch
PS1001	Up to 24 in. (61.0 cm)	18 - 45 hp (13.4 - 33.6 kW)	3-Pt. / Cat. 1



Plows

Prepare garden space or planting areas with One- and Two-Bottom Plows. Our 3-Point Plows allow you to turn over sod in your field or backyard.

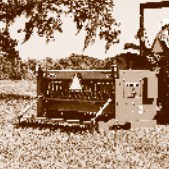
- 14 in. (35.6 cm) or 40 in. (101.6 cm) moldboard width
- Replaceable plow shares, shins, and landslides

Model	Moldboard Width	PTO HP	Hitch
PB1001	One - Bottom / 14 in. (35.6 cm)	25 - 50 hp (13.4 - 37.3 kW)	3-Pt. / Cat. 1
PB1002	Two - Bottom / 40 in. (101.6 cm)	25 - 50 hp (13.4 - 37.3 kW)	3-Pt. / Cat. 1

Planting and Seeding Equipment



Spread it thick or thin



Planting and Seeding Equipment



End-Wheel Grain Drills

An easy, mid-priced way to seed into conventional tillage.

- 8 to 13 ft. (2.5 to 4.0 m) working widths
- Drill cereal grains, legumes and forage crops
- Standard hydraulic lift cylinder raises and lowers the openers
- Optional combination seed/fertilizer box available

Model	Working Width	PTO HP	Hitch
BD1108	8 ft. (2.4 m) Wide, 7.5 in. (19.1 cm) row spacing	42 hp (31.3 kW) minimum	Pull-Type
BD1110	10 ft. 6 in. (3.2 m) Wide, 6 & 7.5 in. (15.2 & 19.1 cm) row spacings	42 hp (31.3 kW) minimum	Pull-Type
BD1113	13 ft. (4.0 m) Wide, 6 & 7.5 in. (15.2, 19.1 cm) row spacings	42 hp (31.3 kW) minimum	Pull-Type



Conservation Seeders

Renovate pastures or landscape roadsides with a Conservation Seeder. It makes quick work of any type of seeding, from native prairie grasses to large legumes.

- Work at speeds up to 7 mph (11.2 kph)
- Full-width coverage to prevent "pinstripe" effect
- Reinforced nylon or cast-iron rear cultipacker rings
- Includes various combinations of standard large-grain, native grass, small-seed legume, and stainless-steel fertilizer boxes
- iMatch and Quick-Coupler compatible (iMatch compatible CS1360 only)

Model	Working Width	PTO HP	Hitch
CS1360	5 ft. (1.5 m)	30 hp (22.4 kW) minimum	Cat. 1 and 2
CS1384	7 ft. (2.1 m)	50 hp (37.3 kW) minimum	Cat. 1 and 2



Overseeder

Get the lush, green turf you demand with a Frontier Overseeder that allows placement of grass seed without reworking your lawn.

- High-precision metering seed cups
- Flow adjustment chart and lever
- iMatch compatible

Model	Drive	Working Width	PTO HP	Hitch
TR2058	PTO driven	58 in. (147.3 cm)	25 - 50 hp (18.6 - 37.3 kW)	Cat. 1



Food Plot Seeders

Create an attractive wildlife habitat with a Food Plot Seeder. Just a single pass can disk, cultivate, deposit seed, pack soil, cover, and level.

- 6, 8, or 12 heavy-duty notched disks
- 9 in. (22.9 cm) sweeps' standard. Chisel points and turning points available through John Deere Service Parts.
- Electric drop seeder and adjustable seed flow
- iMatch and/or Quick-Coupler compatible (except as noted in the table)

Model	Working Width	PTO HP	Hitch
FP2204	42 in. (106.7 cm)	30 - 50 hp (22.4 - 37.3 kW)	Cat. 1
FP2204L	42 in. (106.7 cm)	20 - 50 hp (14.9 - 37.3 kW)	Cat. 1
FP2204P	42 in. (106.7 cm)	18 - 40 hp (14.9 - 29.8 kW)	Pull-Type
FP2206	60 in. (152.4 cm)	45 - 75 hp (33.6 - 55.9 kW)	Cat. 1 and 2
FP2208	82 in. (208.3 cm)	60 - 100 hp (44.7 - 74.6 kW)	Cat. 1 and 2

*FP2204L One middle-breaker shank standard



Broadcast Spreaders

Cover a lot of ground in a hurry with a Broadcast Spreader. These spreaders distribute seed, lime, or fertilizer in an area up to 49 ft. (14.9 m) wide.

- Wide variety of sizes from 3.5 to 10.6 cu. ft. (0.1 to 0.3 m³)
- Non-corrosive polyethylene seamless hopper (SS20 and SS30 Series only)
- Two pull-type models available (SS1022B and SS1035B)
- Optional weather cover and remote gate control (SS10 and SS20 Series only)

Model	Working Width	PTO HP	Hitch
SS1022B	20 ft. (6.1 m) swath	16 - 30 hp (11.9 - 22.4 kW)	Pull-Type
SS1023B	23 ft. (7.0 m) swath	16 - 30 hp (11.9 - 22.4 kW)	Cat. 0 and 1
SS1035B	20 ft. (6.1 m) swath	16 - 45 hp (11.9 - 33.6 kW)	Pull-Type
SS1036B	23 ft. (7.0 m) swath	16 - 45 hp (11.9 - 33.6 kW)	Cat. 1
SS1067B	46 ft. (14.0 m) swath	16 - 55 hp (11.9 - 41.0 kW)	Cat. 1
SS2036B	23 ft. (7.0 m) swath	16 - 45 hp (11.9 - 33.6 kW)	Cat. 1
SS2067B	46 ft. (14.0 m) swath	16 - 55 hp (11.9 - 41.0 kW)	Cat. 1
SS3067B	49 ft. (14.9 m) swath	20 - 60 hp (14.9 - 44.7 kW)	Cat. 1



Pendular Spreaders

A precision Pendular Spreader provides uniform spreading, even if materials have different weights, sizes, and textures.

- Broad range of sizes, from 9.0 to 42.4 cu. ft. (0.25 to 1.20 m³)
- Durable reinforced fiberglass hopper
- Optional hydraulic control and sand/salt spout

Model	Working Width	PTO HP	Hitch
SS1079P	47 ft. (14.3 m) swath	20 - 60 hp (14.9 - 44.7 kW)	Cat. 1
SS1116P	47 ft. (14.3 m) swath	20 - 60 hp (14.9 - 44.7 kW)	Cat. 1 and 2
SS1180P	47 ft. (14.3 m) swath	20 - 60 hp (14.9 - 44.7 kW)	Cat. 1 and 2
SS1220P	47 ft. (14.3 m) swath	20 - 60 hp (14.9 - 44.7 kW)	Cat. 1 and 2

Cutting and Mowing Equipment



Keep your property looking smooth



Rotary Cutters

If you need a rugged, mid-priced rotary cutter that can handle heavy grass, thick brush, and weeds, a Frontier Rotary Cutter is worth a closer look.

- Four efficient models feature 4 to 7 ft. (121.9 to 213.4 cm) cutting widths
- iMatch compatible on RC2048, RC2060, and RC2072 only
- Category 2 Quick Hitch compatible on RC2084 only

Model	Working Width	PTO HP	Hitch
RC2048	48 in. (121.9 cm)	18 - 45 hp (13.4 - 33.6 kW)	Cat. 1 & adaptable to Cat. 2
RC2060	60 in. (152.4 cm)	20 - 65 hp (14.9 - 48.5 kW)	Cat. 1 & adaptable to Cat. 2
RC2072	72 in. (182.9 cm)	25 - 65 hp (18.6 - 48.5 kW)	Cat. 1 & adaptable to Cat. 2
RC2084	84 in. (213.4 cm)	45 - 90 hp (33.6 - 67.1 kW)	Cat. 2



Flex-Wing Grooming Mowers

Go with the Flex-Wing Grooming Mowers for a quality cut over uneven fields. Features wider working widths to make quick work at sod farms, golf courses, and parks.

- 12 to 20 ft. (3.7 to 6.1 m) cutting widths
- 8-gauge steel plate deck (10-gauge on FM3012)
- Auto-engage transport latch

Model	Working Width	PTO HP	Hitch
FM1012	12 ft. (3.7 m)	30 - 80 hp (22.4 - 59.7 kW)	Pull-Type
FM2012R	12 ft. (3.7 m)	25 - 80 hp (18.6 - 59.7 kW)	Pull-Type
FM2112R	12 ft. (3.7 m)	35 - 80 hp (26.1 - 59.7 kW)	Pull-Type
FM3012	12 ft. 6 in. (3.8 m)	25 - 60 hp (18.6 - 44.7 kW)	Pull-Type
FM1015	15 ft. (4.6 m)	35 - 80 hp (26.1 - 59.7 kW)	Pull-Type
FM2015R	15 ft. (4.6 m)	30 - 80 hp (22.4 - 59.7 kW)	Pull-Type
FM2115R	15 ft. (4.6 m)	35 - 80 hp (26.1 - 59.7 kW)	Pull-Type
FM1017	17 ft. (5.2 m)	40 - 80 hp (29.8 - 59.7 kW)	Pull-Type
FM2017R	17 ft. (5.2 m)	35 - 80 hp (26.1 - 59.7 kW)	Pull-Type
FM2117R	17 ft. (5.2 m)	35 - 80 hp (26.1 - 59.7 kW)	Pull-Type
FM2120R	20 ft. (6.1 m)	35 - 80 hp (26.1 - 59.7 kW)	Pull-Type



Grooming Mowers

The Grooming Mower delivers a smooth cut for lawns, sporting fields, and golf courses.

- 4 to 9 ft. (121.9 to about 279.4 cm) cutting widths
- Single- or dual-belt drive
- High blade speed for thorough cutting and uniform distribution
- Category 1 iMatch compatible with optional kit
- Rear discharge

Model	Working Width	PTO HP	Hitch
GM1048E	48 in. (121.9 cm)	16 - 30 hp (11.9 - 22.4 kW)	Cat. 1
GM1060E	60 in. (152.4 cm)	18 - 30 hp (13.4 - 22.4 kW)	Cat. 1
GM1072E	72 in. (182.9 cm)	22 - 30 hp (16.4 - 22.4 kW)	Cat. 1
GM1060	60 in. (152.4 cm)	15 - 40 hp (11.2 - 29.8 kW)	Cat. 1
GM2060R	60 in. (152.4 cm)	20 - 50 hp (14.9 - 37.3 kW)	Cat. 1
GM1072	72 in. (182.9 cm)	20 - 40 hp (14.9 - 29.8 kW)	Cat. 1
GM2072R	72 in. (182.9 cm)	20 - 50 hp (14.9 - 37.3 kW)	Cat. 1
GM1084	84 in. (213.4 cm)	25 - 40 hp (18.6 - 29.8 kW)	Cat. 1
GM2084R	84 in. (213.4 cm)	20 - 50 hp (14.9 - 37.3 kW)	Cat. 1
GM1190	90 in. (228.6 cm)	25 - 50 hp (18.6 - 37.3 kW)	Cat. 1
GM2190R	90 in. (228.6 cm)	30 - 70 hp (22.4 - 52.2 kW)	Cat. 1
GM2109R	110 in. (279.4 cm)	30 - 70 hp (22.4 - 52.2 kW)	Cat. 1
GM3054	54 in. (137.2 cm)	15 - 25 hp (11.2 - 18.6 kW)	Ltd. Cat. 1
GM3060	60 in. (152.4 cm)	25 - 35 hp (18.6 - 26.1 kW)	Cat. 1
GM3072	72 in. (182.9 cm)	25 - 35 hp (18.6 - 26.1 kW)	Cat. 1

Hay and Forage Equipment



It's about feed quality and value from start to finish



Heavy-Duty Wheel Rake

Rake more hay in less time with the Heavy-Duty Wheel Rake. Large, wind-panel rake wheels gather hay faster so you can start baling sooner.

- 60-inch (152.4 cm) diameter rake wheels with rubber-mounted teeth
- Cab-operated electric and hydraulic controls
- Adjustable raking beams from 0- to 8-degrees of pitch for working dry or wet crop

Model	Raking Width	Windrow Width	# of Wheels
WR5417	29 ft. (8.8 m) maximum	72 in. (182.9 cm) maximum	17 Wheels



High-Capacity Carted Wheel Rakes

High-Capacity Carted Wheel Rakes provide fast raking speed without sacrificing performance to maximize hay quality and retain feed value.

- Rake arm and rake wheel pivot joints provide flexibility over uneven ground
- Rake arms and beams designed for higher ground clearance maximize crop volume
- Rake with one or both arms as needed
- Standard 60in. rake wheels turn more slowly, reducing leaf loss

Model	Raking Width	Windrow Width	# of Wheels
WR3108	19 ft. (5.79 m) maximum	36 - 60 in. (91.4 - 152.4 cm)	8 Wheels
WR3110	22 ft. (6.71 m) maximum	48 - 72 in. (121.9 - 183 cm)	10 Wheels
WR3112	24 ft. 4 in. (7.32 m) maximum	48 - 72 in. (121.9 - 183 cm)	12 Wheels



High-Capacity Wheel Rakes

For commercial hay makers looking to shave a little time in the field, High-Capacity Wheel Rakes give you the performance and consistency to engage nearly any type of terrain.

- Wheel lift cylinders retract in the storage position
- Ratchet jack adjusts main frame so axle uprights are perpendicular to ground

Model	Raking Width	Windrow Width	# of Wheels
WR1212	24 ft. (7.3 m) maximum	38 - 58 in. (96.5 - 147.3 cm)	12 Wheels
WR1214	28 ft. (8.5 m) maximum	38 - 58 in. (96.5 - 147.3 cm)	14 Wheels
WR1216	32 ft. (9.8 m) maximum	38 - 58 in. (96.5 - 147.3 cm)	16 Wheels



Carted Wheel Rakes

Carted Wheel Rakes provide optimum maneuverability and extra down-pressure to adjust to land contours for tough raking jobs.

- Floating arms enable rake wheels to follow ground contour
- Adjustable ground pressure allows each rake beam to adapt to various crops and conditions
- Vary windrow width with simple 2-point position, pin-and-hole, or bolt adjustment

Model	Raking Width	Windrow Width	# of Wheels
WR0008	17 ft. 8 in. (5.4 m) maximum	24 - 51 in. (61 - 130 cm)	8 Wheels
WR0010	21 ft. (6.4 m) maximum	24 - 51 in. (61 - 130 cm)	10 Wheels
WR0012	24 ft. 4 in. (7.4 m) maximum	24 - 51 in. (61 - 130 cm)	12 Wheels
WR3008	15 - 19 ft. (4.6 - 5.8 m)	36 - 60 in. (91.4 - 152.4 cm)	8 Wheels
WR3010	18 - 22 ft. (5.5 - 6.7 m)	48 - 72 in. (121.9 - 182.9 cm)	10 Wheels
WR3012	20 - 24 ft. (6.1 - 7.3 m)	48 - 72 in. (121.9 - 182.9 cm)	12 Wheels

Hay and Forage Equipment



Rotary Rakes

With a gentle sweeping action, Rotary Rakes reduce dry-down time while keeping dirt and debris out of your windrows for higher-quality bales.

- Tilt rotor with front crank adjustment
- Adjustable tine height
- Removable tine arms and folding guards for transport and storage (except on RR2109)
- Constant-velocity overload clutch

Model	Raking Width	PTO HP	# of Tine Arms
RR2109	9 ft. (2.7 m)	30 hp (22.4 kW)	9
RR2211	11 ft. (3.4 m)	40 hp (29.8 kW)	11
RR2313	13 ft. (4.0 m)	40 hp (29.8 kW)	13
RR2324	24 ft. (7.3 m)	50 hp (29.8 kW)	26



Disc Mowers

Get a clean, even cut over rough ground with a rugged Disc Mower. Perfect for mowing through tough, thick crop.

- Quick-remove shear hub assembly
- iMatch and Quick Coupler compatible

Model	Cutting Width	PTO HP	Hitch
DM5050	6 ft. 6 in. (2.0 m)	40 hp (29.4 kW)	Cat. 1 or 2
DM5060	7 ft. 9 in. (2.4 m)	45 hp (33.1 kW)	Cat. 1 or 2
DM5070	9 ft. (2.7 m)	50 hp (40.5 kW)	Cat. 2



Hay Tedders

Improve feed quality and dry-down time with a Hay Tedder. They provide thorough conditioning and even distribution in all types of hay.

- Tine height adjustments allow you to match implement to crop conditions
- Flotation tires for smooth operation over irregular ground
- Standard transport safety chain and safety guards

Model	Tedding Width	PTO HP	# of Rotors
TD1316	16 ft. 5 in. (5.0 m)	20 hp (14.9 kW)	4
TD3418	18 ft. 2 in. (5.5 m)	30 hp (22.4 kW)	4
TD3427	27 ft. (8.2 m)	55 hp (41.0 kW)	6



Disc Mower Caddy

The Disc Mower Caddy makes mower hook up easier when it's time to mow.

- Level the caddy to fit your tractor with the adjustable height clevis
- Set cutting height with manual turnbuckle
- Add ballast weights for larger Disc Mowers with mounting brackets
- Dual-bearing tower design

Model	Minimum HP	PTO	Hitch	Disc Mower Compatibility
DC1000	15 hp (11.2 kW)	540 rpm	Pull-Type	Cat. 2



Inline Bale Wrappers

Protect silage bales from harsh weather and preserve feed value with Inline Bale Wrappers.

- Electric over hydraulic steering with optional remote control
- Fully automatic cycling
- Tongue conveniently folds and telescopes for easy hook-up and storage
- Film wrap sensor

Model	Power	Bale Capacity	Wrapping Capacity
LW1166	13 hp (9.7 kW)	5 ft. 6 in. (1.7 m) round	120 bales / hr
LW1266	13 hp (9.7 kW)	5 ft. 6 in. (1.7 m) round; 3 x 3 x 5 ft. 6 in. (.9 x .9 x 1.7 m) square	120 bales / hr



Bale Carriers

Shorten your workday with reliable Frontier Bale Carriers – a quick, convenient way to move multiple bales from field to storage, or to line them up evenly for wrapping.

- Adjustable bale arms
- Only requires two hydraulic selective control valves (SCV's)
- 45 degree dumping angle

Model	Towing Unit Minimum Weight	Bale Capacity	Loaded Capacity
BC1108	13,300 lb. (6,033 kg)	6 to 8 bales	20,000 lb. (9,072 kg)
BC1110	16,000 lb. (7,258 kg)	8 to 10 bales	24,000 lb. (10,886 kg)



Sickle Bar Mowers

Sickle Bar Mowers mow up or down hillsides with a blade angle that can be adjusted from -45 degrees to +90 degrees.

- Operate cylinder stop from tractor seat
- Double-action cutting bar with hydraulic lifting cylinder
- iMatch compatible

Model	Working Width	PTO HP	Hitch
SB3106	5 ft. 9 in. (1.8 m)	25 - 50 hp (18.6 - 37.3 kW)	Cat. 1 and Cat. 2
SB3107	6 ft. 9 in. (2.1 m)	25 - 50 hp (18.6 - 37.3 kW)	Cat. 1 and Cat. 2
SB3108	7 ft. 8 in. (2.3 m)	25 - 50 hp (18.6 - 37.3 kW)	Cat. 1 and Cat. 2



Hay Mergers

Combine multiple windrows into large, consistent windrows with a Hay Merger. Save valuable time by making baling and forage harvesting more efficient.

- Excellent for high-moisture forage crops
- Patented anti-wrap guard keeps material from wrapping around shafts
- Independent head flotation follows ground contours

Model	Pickup Width	PTO HP	Hydraulic Requirement
HM1109	9 ft. (2.7 m)	70 hp (52.2 kW)	16 GPM (U.S. Gallons)
HM1209	9 ft. (2.7 m)	70 hp (52.2 kW)	16 GPM (U.S. Gallons)
HM1212	12 ft. (3.7 m)	70 hp (52.2 kW)	16 GPM (U.S. Gallons)

Hay and Forage Equipment



3-Point Bale Handling

Transport large round bales effortlessly with a 3-Point Bale Handler. Use the hydraulic Bale Unroller to haul and unroll round bales for feeding.

- Steel-forged bale spear tines on HS20 Series models
- Durable, heavy-duty design
- Reduces hay loss while hauling

Model	Description	Bale Capacity	Hitch
HS2001	3 Pt. Bale Spear (single tine)	2200 lb. (997.9 kg)	Cat. 1 and 2
HS2002	3 Pt. Bale Spear (dual tine)	3000 lb. (1360.8 kg)	Cat. 2 and 3
HS2003	3 Pt. Large Square Bale Spear (triple tine)	3000 lb. (1360.8 kg)	Cat. 2 and 3
HS2004	3 Pt. Large Dual Round Bale Spear (quad tine)	4000 lb. (1814.4 kg)	Cat. 2 and 3
BU1060	3 Pt. Bale Unroller	2000 lb. (907.2 kg)	Cat. 1 and 2



Bale Spears

Round or square, whatever the job, there is a Frontier Bale Spear up to the task. Choose from a wide range of single- and triple-tine models to move and stack bales quickly and easily.

- Replaceable spears
- Multiple bale-handling sizes

Model	Bale Handling Capacity	Loader Series / Carrier
AB11(D, E, and G)	1 Large Round Bale 2000 lb. (907.2 kg)	300, 400, 500, 600, and 700 / Global Carrier
AB12 (A, D, E, and G)	1 Large Round or Square Bale 2000 lb. (907.2 kg)	300, 400, 500, 600, 700, and 800 / Global Carrier
AB13 (D, E, G, and K)	1 Large Round Bale 2500 lb. (1,134.0 kg)	300, 400, 500, 600, and 700 / Global and Cat. 2 Global Carrier
AB14 (A, D, G, and K)	1 Large Square or 2 Round Bales	600, 700, and 800 / Global and Cat. 2 Global Carrier
AB15 (A and K)	2 Large Square Bales	800 / Cat. 2 Global Carrier
AB18 (K)	3 Large Square Bales	Cat. 2 Global Carrier



Small Square-Bale Fork

Moving small square bales can be just as efficient as larger ones with a Small Square-Bale Fork. Move eight flat, or ten small indexed square bales in a single load to save time, fuel, and labor expenses.

- 32 engaging teeth for secure transporting
- Adjustable guide bar allows for multiple bale sizes
- Loader Quick-attach capabilities

Model	Bale Handling Capacity	Loader Series / Carrier
AB16 (A, D, and G)	Flat - Eight Small Square Bales, or 10 on edge	600, 700, and 800 / Global Carrier



Round-Bale Hugger

Don't lose volume or nutritional value while moving large round bales. Treat regular or silage bales with care with the gentle-grasping Round-Bale Hugger.

- Handles wrapped bales from 3 to 6 ft. (0.9 to 1.8 m) in diameter
- Single-cylinder configuration allows arms to grip with equal strength

Model	Bale Handling Capacity	Loader Series / Carrier
AH11 (A, D, and G)	1 Wrapped Bale	600, 700, and 800 / Global Carrier

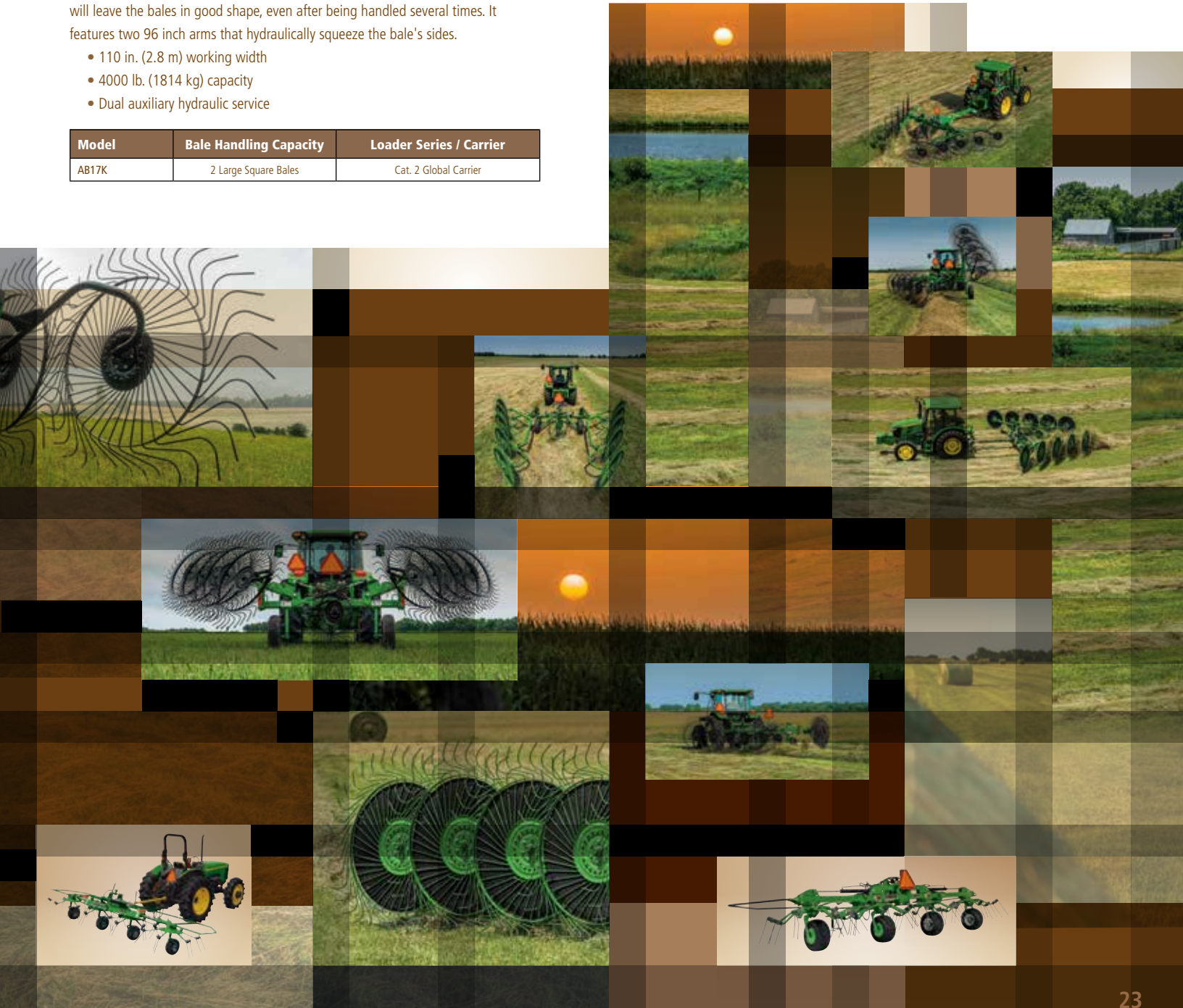


Large Square Bale Squeeze

If you handle lots of large square bales, Frontier's AB17K Large Square Bale Squeeze will leave the bales in good shape, even after being handled several times. It features two 96 inch arms that hydraulically squeeze the bale's sides.

- 110 in. (2.8 m) working width
- 4000 lb. (1814 kg) capacity
- Dual auxiliary hydraulic service

Model	Bale Handling Capacity	Loader Series / Carrier
AB17K	2 Large Square Bales	Cat. 2 Global Carrier



Cotton Equipment



Move it wherever you need it



Cotton Module Handler

Move cotton modules and place them precisely where you want them with the Cotton Module Handler. Optional masts enable operators to load bales directly on to flatbed trucks.

- Moves one large round cotton module at a time
- Flow divider valve ensures even arm actuation
- Standard side-shift feature for final bale adjustment

Model	Lift Height	Arm Opening Clearance	Hitch
CM1100	24 in. (61 cm) 72 in. with mast (182.9 cm)	81.68 in. (207.5 cm) 29.68 in. with mast (75.4 cm)	Cat. 3 or 4N

Header Transport Equipment



Making a smart move



Combine Header Transports

Conveniently move combine headers from field-to-field or farm-to-farm with a Combine Header Transport. They also protect headers between harvests by storing them off the ground.

- Choose standard 6,000 lb. (2,721 kg) or optional 7,000 lb.(3,175 kg) torsion flex axle rear suspension
- Standard adjustable slider brackets; optional adjustable draper brackets or windrower brackets
- Steel front fender prevents debris build-up on combine heads

Model	Description	Working Width	Hitch
HT1124	Farm maximum speed 20 MPH (32.2 KPH) ¹	24 ft. (7.3 m)	Clevis or Pintle
HT1128	Farm maximum speed 20 MPH (32.2 KPH) ¹	28 ft. (8.5 m)	Clevis or Pintle
HT1132	Farm maximum speed 20 MPH (32.2 KPH) ¹	32 ft. (9.8 m)	Clevis or Pintle
HT1138	Farm maximum speed 20 MPH (32.2 KPH) ¹	38 ft. (11.6 m)	Clevis or Pintle
HT1142	Farm maximum speed 20 MPH (32.2 KPH) ¹	42 ft. (12.8 m)	Clevis or Pintle
HT1224	Highway with lights ²	24 ft. (7.3 m)	Ball or Pintle
HT1228	Highway with lights ²	28 ft. (8.5 m)	Ball or Pintle
HT1232	Highway with lights ²	32 ft. (9.8 m)	Ball or Pintle
HT1238	Highway with lights ²	38 ft. (11.6 m)	Ball or Pintle
HT1242	Highway with lights ²	42 ft. (12.8 m)	Ball or Pintle
HT1248	Highway with lights ²	48 ft. (14.6 m)	Ball or Pintle

¹Tractor tow only ²Truck tow only

Livestock and Equine Equipment



From clean-up to green-up – we've got you covered



Side-Discharge Manure Spreader

Side-discharge spreaders provide uniform distribution and are adjustable for precise placement of material. They feature variable auger speed, tandem axles, and are PTO-driven.

- Auger and discharge gate position indicators
- 40 in. (101.6 cm) wide side-discharge expeller
- Automatic chain-oiler system

Model	Capacity	Minimum Tractor Weight	Hitch
MS2320	2000 gallons (7,571 L)	Minimum tractor weight 15,750 lb. (7,144 kg)	Pull-Type
MS2326	2600 gallons (9,842 L)	Minimum tractor weight 19,690 lb. (8,931 kg)	Pull-Type
MS2334	3400 gallons (12,870 L)	Minimum tractor weight 26,070 lb. (11,825 kg)	Pull-Type
MS2342	4200 gallons (15,898 L)	Minimum tractor weight 34,350 lb. (15,581 kg)	Pull-Type



Hydraulic-Push Manure Spreaders

When you need to cover a lot of ground in a hurry, opt for the Hydraulic-Push Manure Spreader. High-capacity spreader boxes and fast unload times reduce the expenditure of time, fuel, and labor.

- Structural floor beams spaced 95 in. (2.4 m) apart create maximum support
- Solid polyethylene floor and sides
- Shear-bolt protection
- Increase spreading width with optional vertical beaters

Model	Capacity	Minimum Tractor Weight	Hitch
MS1442	425 bushels	Minimum tractor weight 16,534 lb. (7,499.7 kg)	Pull-Type
MS1455	550 bushels	Minimum tractor weight 21,620 lb. (9,806.7 kg)	Pull-Type



Chain-Unloading Manure Spreaders

Spreading manure is both cost-effective and efficient with a Chain-Unloading Manure Spreader. It spreads material evenly to maximize nutrient value.

- 25 to 660 heaped bushel capacity
- Polyethylene bonded floor

Model	Capacity	Minimum Tractor Weight	Hitch
MS1102G	25 bushels	Minimum tractor weight 961 lb. (435.9 kg)	Pull-Type
MS1105G	50 bushels	Minimum tractor weight 2,176 lb. (987.0 kg)	Pull-Type
MS1108G	80 bushels	Minimum tractor weight 2,851 lb. (1,293.2 kg)	Pull-Type
MS1108	80 bushels	Minimum tractor weight 3,282 lb. (1,488.7 kg)	Pull-Type
MS1112	125 bushels	Minimum tractor weight 4,547 lb. (2,062.5 kg)	Pull-Type
MS1117	175 bushels	Minimum tractor weight 5,670 lb. (2,571.9 kg)	Pull-Type
MS1223	235 bushels	Minimum tractor weight 7,742 lb. (3,511.7 kg)	Pull-Type
MS1227	270 bushels	Minimum tractor weight 9,068 lb. (4,113.2 kg)	Pull-Type
MS1231	310 bushels	Minimum tractor weight 10,532 lb. (4,777.2 kg)	Pull-Type
MS1237	370 bushels	Minimum tractor weight 13,164 lb. (5,971.1 kg)	Pull-Type
MS1243	430 bushels	Minimum tractor weight 15,340 lb. (6,958.1 kg)	Pull-Type
MS1256	560 bushels	Minimum tractor weight 20,282 lb. (9,199.8 kg)	Pull-Type
MS1266	660 bushels	Minimum tractor weight 26,687 lb. (12,105.0 kg)	Pull-Type



Grinder-Mixer

Save time and money when feeding large herds with the Grinder-Mixer. The large-capacity chamber enables dairy and beef producers to mix their own rations in fewer loads.

- 14 in. (36 cm) mixing auger
- Pulley-driven pump, cyclonic reservoir and pressure-relief valve featured in self-contained hydraulic system
- Weight scale is optional

Model	Capacity	PTO HP
GX1117	135 bushels	50 - 145 hp (37.3 - 108.1 kW)



Manure Forks with Grapple

Move manure or clean up hay with a Manure Fork with Grapple.

- Compatible with a wide range of John Deere loaders
- Cylinders, hoses, and tips included

Model	Working Width	Loader Series / Carrier
AM11 (H)	60 in. (152.4 cm)	300 and 400 Series Loader
AM11 (E)	72 in. (182.9 cm)	300, 400, and 500 Series Loader
AM11 (D and G)	84 in. (213.4 cm)	600 and 700 Series Loader / Global Carrier
AM11 (D and G)	96 in. (243.8 cm)	600 and 700 Series Loader / Global Carrier



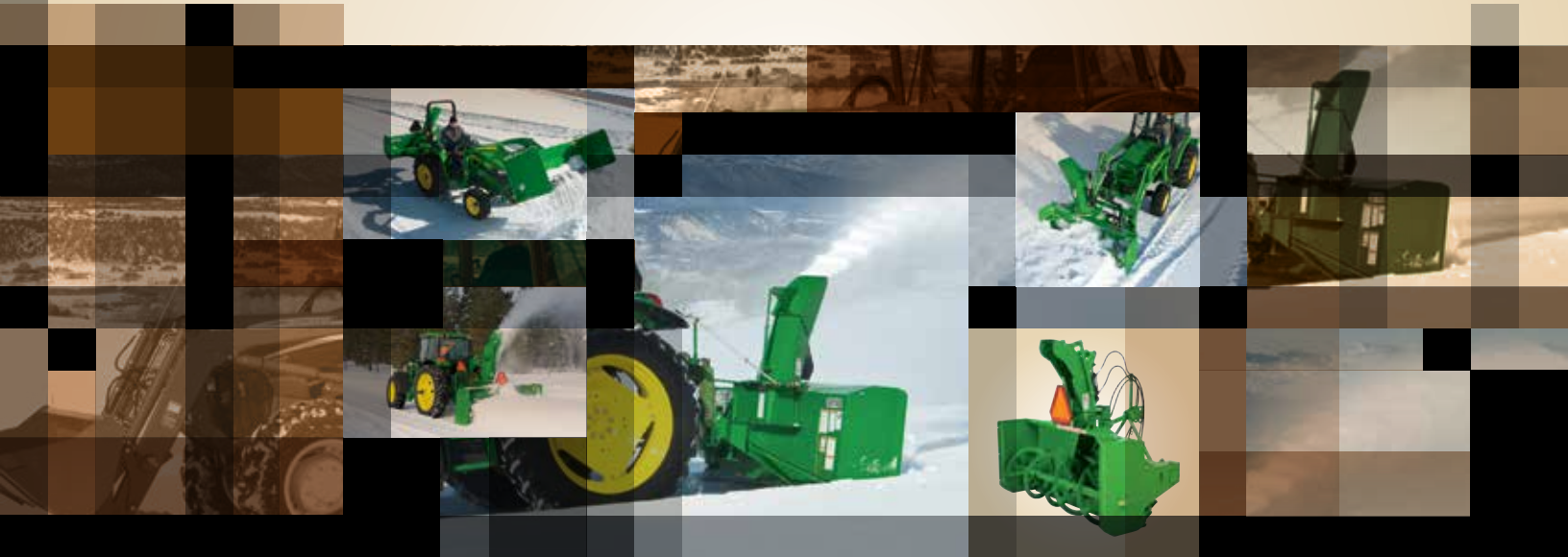
Free-Stall Scrapers

Maintain cleaner dairy pens with a handy Free-Stall Scraper. Clear out corners and hard-to-reach areas to make cleaning stalls less of a chore.

- Reversible and replaceable rubber edge
- Optional bolt-on back-drag
- Compatible with John Deere 300, 400, and 500 Series Loaders

Model	Working Width	Loader Series
AE11 (E)	60 in. (152.4 cm)	300, 400, and 500 Series Loader
AE11 (E)	72 in. (182.9 cm)	300, 400, and 500 Series Loader
AE11 (E)	84 in. (213.4 cm)	300, 400, and 500 Series Loader
AE11 (E)	96 in. (243.8 cm)	300, 400, and 500 Series Loader

Snow Removal Equipment



Put winter in its place

3-Point Snowblowers

Move snow out of the way so you can get on with your work with a powerful 3-Point Snow Blower. These blowers are the ideal size for large-property and commercial operations, clearing yards, parking lots, driveways, or sidewalks.

- Adjustable skid shoes
- Standard manual or optional hydraulic chute deflector
- Welded- or bolted-on reversible cutting edges
- Rotating drum equipped on SB13R Series
- iMatch and/or Quick-Coupler compatible¹



Model	Working Width	PTO HP	Hitch
SB1148	48 in. (121.9 cm)	16 - 35 hp (11.9 - 26.1 kW)	Cat. 1
SB1154	54 in. (137.2 cm)	16 - 35 hp (11.9 - 26.1 kW)	Cat. 1
SB1164	64 in. (162.6 cm)	20 - 50 hp (14.9 - 37.3 kW)	Cat. 1
SB1174	74 in. (188.0 m)	30 - 50 hp (22.4 - 37.3 kW)	Cat. 1
SB1184	84 in. (213.4 cm)	35 - 90 hp (26.1 - 67.1 kW)	Cat. 1 and 2
SB1194	94 in. (238.8 cm)	35 - 90 hp (26.1 - 67.1 kW)	Cat. 2
SB1274	74 in. (188.0 m)	30 - 80 hp (22.4 - 59.7 kW)	Cat. 1 and 2
SB1280	80 in. (203.2 cm)	30 - 80 hp (22.4 - 59.7 kW)	Cat. 1 and 2
SB1388	88 in. (223.5 cm)	55 - 95 hp (41.0 - 70.8 kW)	Cat. 2
SB1388R	88 in. (223.5 cm)	55 - 95 hp (41.0 - 70.8 kW)	Cat. 2
SB1392	92 in. (233.7 cm)	75 - 125 hp (55.9 - 93.2 kW)	Cat. 2
SB1392R	92 in. (233.7 cm)	75 - 125 hp (55.9 - 93.2 kW)	Cat. 2
SB1308	98 in. (248.9 cm)	100 - 150 hp (74.6 - 111.9 kW)	Cat. 2 and 3
SB1308R	98 in. (248.9 cm)	100 - 150 hp (74.6 - 111.9 kW)	Cat. 2 and 3
SB1309R	104 in. (264.2 cm)	100 - 150 hp (74.6 - 111.9 kW)	Cat. 2 and 3

¹Quick-Coupler optional on SB13 Series. Requires additional kit.

Snow Removal Equipment



Loader-Mount Snowblowers

Power through deep snowdrifts with Loader-Mount Snowblowers. Front mounting provides greater visibility and reduces operator fatigue.

- Powered by 3-pt. hydraulic power pack
- Adjustable skid shoes
- Standard hydraulic chute rotation
- Compatible with current John Deere 300 or 400 Series Loaders
- Optional hydraulic chute deflector

Model	Working Width	Loader Series
SB2164	64 in. (162.6 cm)	300 Series Loader
SB2176	76 in. (193.0 cm)	400 Series Loader

Hydraulic Power Packs

Model	Hydraulic Capacity	PTO HP
HP2025	16 GPM / 2,700 psi (60.57 LPM / 18,620 kPa)	25 - 35 hp (18.6 - 26.1 kW)
HP2134	20 GPM / 3,000 psi (75.71 LPM / 20,680 kPa)	35 - 65 hp (26.1 - 48.5 kW)



Front Blades

For small snow removal chores, Front Blades are a dependable solution. Curved blade edges roll snow rather than pushing it for smoother, easier moving.

- 72 to 120 in. (1.8 to 3.0 m) working widths
- Standard skid shoes
- Quick-attach capabilities

Model	Working Width	Loader Series / Carrier
AF11 (E)	72 in. (182.9 cm)	300, 400, and 500 Series Loader
AF11 (D, E, and G)	84 in. (213.4 cm)	300, 400, 500, 600, and 700 Series Loaders / Global Carrier
AF11 (D and G)	96 in. (243.8 cm)	600 and 700 Series Loader / Global Carrier
AF12 (D and G)	96 in. (243.8 cm)	600 and 700 Series Loader / Global Carrier
AF12 (D and G)	108 in. (274.3 cm)	600 and 700 Series Loader / Global Carrier
AF12 (D and G)	120 in. (304.8 cm)	600 and 700 Series Loader / Global Carrier



Loader-Mount Rotary Brooms

Sweep walks, driveways, parking lots, and other paved areas with a Loader-Mount Rotary Broom. These brooms can save valuable time in commercial applications.

- Powered by 3-point hydraulic power pack
- 32 in. (81.3 cm) diameter brush
- Hydraulic left or right 23-degree angling
- Optional dust suppression system features 15-gallon (56.8 l) tank
- Optional gauge wheels

Model	Working Width	Loader Series
SW2160	60 in. (152.4 cm)	300 Series Loader
SW2172	72 in. (182.9 cm)	300 or 400 Series Loader
SW2184	84 in. (213.4 cm)	400 Series Loader

Hydraulic Power Packs

Model	Hydraulic Capacity	PTO HP
HP2025	16 GPM / 2,700 psi (60.57 LPM / 18,620 kPa)	25 - 35 hp (18.6 - 26.1 kW)
HP2134	20 GPM / 3,000 psi (75.71 LPM / 20,680 kPa)	35 - 65 hp (26.1 - 48.5 kW)



Snow Push

The Snow Push is a fast, simple option for moving snow away from buildings, fences, and hard-to-reach areas.

- 6 to 10 ft. (1.8 to 3.05 m) working widths
- Welded skid shoes
- Up to 8.5 cu. ft. (2.6 m³) capacity
- Rubber or steel edges available on various models

Model	Working Width	Loader Series
AS10 (H)	72 in. (182.9 cm)	300 and 400 Series Loader
AS10 (H)	84 in. (213.4 cm)	300 and 400 Series Loader
AS10 (H)	96 in. (243.8 cm)	300 and 400 Series Loader
AS11 (E)	8 ft. (2.4 m)	300, 400, and 500 Series Loader
AS11 (E)	9 ft. (2.7 m)	300, 400, and 500 Series Loader
AS11 (E)	10 ft. (3.05 m)	300, 400, and 500 Series Loader

[illegible]

Get attached to improve productivity



Material Handling Equipment (Loader Attachments)

Material Handling Equipment (Loader Attachments)

Loader Compatibility

Model Code	Compatible John Deere Carriers
A	800 Series
D	600 and 700 Series
E	300, 400, and 500 Series
F	200 to 500 Series
G	Global Carriers
H	300 and 400 Series
K	Global Carrier - Category 2



Pallet Forks

Don't let heavy objects weigh down your workday. With Frontier Pallet Forks, you can lift pallets, load lumber, move bulky material, or clear construction sites quickly and efficiently.

- Fork capacity up to 5,500 lb. (2,494.8 kg)
- Replaceable fork tines
- Handles palletized products

Model	Description	Loader Series / Carrier
AP12 (A, D, F, G, and K)	Fixed	200, 300, 400, 500, 600, 700, and 800 Series Loader / Global and Cat. 2 Global
AP13 (D, F, G, and K)	Floating	200, 300, 400, 500, 600, and 700 Series Loader / Global and Cat. 2 Global



Bale Spears

Round or square, whatever the job, there is a Frontier Bale Spear up to the task. Choose from a wide range of single- and triple-tine models to move and stack bales quickly and easily.

- Replaceable spears
- Multiple bale-handling sizes

Model	Bale Handling Capacity	Loader Series / Carrier
AB11 (D, E, and G)	1 Large Round Bale 2000 lb. (907.2 kg)	300, 400, 500, 600, and 700 Series Loader / Global Carrier
AB12 (A, D, E, and G)	1 Large Round or Square Bale 2000 lb. (907.2 kg)	300, 400, 500, 600, 700, and 800 Series Loader / Global Carrier
AB13 (D, E, G, and K)	1 Large Round Bale 2500 lb. (1,134.0 kg)	300, 400, 500, 600, and 700 Series Loader / Global and Cat. 2 Global
AB14 (A, D, G, and K)	1 Large Square or 2 Round Bales	600, 700, and 800 Series Loader / Global and Cat. 2 Global
AB15 (A and K)	2 Large Square Bales	800 Series Loader / Cat. 2 Global
AB18 (K)	3 Large Square Bales	Cat. 2 Global



Round-Bale Hugger

Don't lose volume or nutritional value while moving large round bales. Treat regular or silage bales with care with the gentle-grasping Round-Bale Hugger.

- Handles wrapped bales from 3 to 6 ft. (0.9 to 1.8 m) in diameter
- Single-cylinder configuration allows arms to grip with equal strength

Model	Bale Handling Capacity	Loader Series / Carrier
AH11 (A, D, and G)	1 Wrapped Bale	600, 700, and 800 Series Loader / Global Carrier



Silage Defacer

Loosen silage while maintaining a smooth, compacted bunker space with the Silage Defacer. This unique tool pierces, separates, and rakes without cutting or reducing the size of the silage, helping to ensure complete blending.

- Quick cam adjustment for proper chain tension
- Full access to chain and sprockets with removable panels
- Easily replaceable tooth sections
- Loader Quick-attach capabilities

Model	Working Width	Loader Series / Carrier
AG10 (A, D, and G)	96 in. (243.8 cm)	600, 700, and 800 Series Loader / Global Carrier
AG11S	96 in. (243.8 cm)	Skid Steer
AG12S	96 in. (243.8 cm)	Skid Steer



Debris Grapples

Grounds maintenance workers and demolition crews can clean up worksites quickly and efficiently with a powerful Debris Grapple. The rugged construction enables operators to clutch heavy or bulky items more easily.

- Maximum clamping force keeps debris stable when transporting
- Slim design improves visibility
- Heavy-duty steel construction provides performance and long wear

Model	Working Width	Loader Series / Carrier
AD11 (H)	60 in. (152.4 cm)	300 and 400 Series Loader
AD11 (E)	72 in. (182.9 cm)	300, 400, and 500 Series Loader
AD12 (D and G)	76 in. (193.0 cm)	600 and 700 Series Loader / Global Carrier
AD12 (D and G)	82 in. (208.3 cm)	600 and 700 Series Loader / Global Carrier
AD12 (D and G)	88 in. (223.5 cm)	600 and 700 Series Loader / Global Carrier
AD12 (D and G)	96 in. (243.8 cm)	600 and 700 Series Loader / Global Carrier



Small Square-Bale Fork

Moving small square bales can be just as efficient as larger ones with a Small Square-Bale Fork. Move eight flat, or ten small indexed square bales in a single load to save time, fuel and labor expenses.

- 32 engaging teeth for secure transporting
- Adjustable guide bar allows for multiple bale sizes
- Quick-attach capabilities

Model	Bale Handling Capacity	Loader Series / Carrier
AB16 (A, D, and G)	Flat - Eight Small Square Bales, or 10 on edge	600, 700, and 800 Series Loader / Global Carrier



Manure Forks with Grapple

Simplify your material handling chores with a rugged Manure Fork. Along with the versatile grapple feature, you can move manure or clean up hay and light brush with less effort.

- Compatible with a wide range of John Deere loaders
- Cylinders, hoses, and tips included

Model	Working Width	Loader Series / Carrier
AM11 (H)	60 in. (152.4 cm)	300 and 400 Series Loader
AM11 (E)	72 in. (182.9 cm)	300, 400, and 500 Series Loader
AM11 (D and G)	84 in. (213.4 cm)	600 and 700 Series Loader / Global Carrier
AM11 (D and G)	96 in. (243.8 cm)	600 and 700 Series Loader / Global Carrier

Material Handling Equipment (Loader Attachments)



Root Grapples

Get rid of unwanted brush, rocks, logs, and other debris with a Root Grapple. It is the perfect tool for storm cleanup or clearing land of rubble and debris.

- Heavy-duty construction provides long life
- Fully enclosed mounting frame
- Protected hydraulic hoses

Model	Working Width	Loader Series / Carrier
AV20 (H)	60 in. (152.4 cm)	300 and 400 Series Loader
AV20 (E)	62 in. (157.5 cm)	100, 400, and 500 Series Loader
AV20 (D)	77 in. (195.6 cm)	600 and 700 Series Loader
AV20 (G)	77 in. (195.6 cm)	Global Carrier



4-In-1 Buckets

Move loose material, clear logs or debris, or grade and smooth driveways with the versatile 4-in-1 Bucket.

- Heavy-duty steel hinges resist bending and provide long wear life
- Sturdy bucket clam seals shut to secure material in transport

Model	Working Width	Loader Series / Carrier
AY11 (H)	60 in. (152.4 cm)	300 and 400 Series Loader
AY11 (E)	72 in. (182.9 cm)	300, 400, and 500 Series Loader
AY12 (D and G)	72 in. (182.9 cm)	600 and 700 Series Loader / Global Carrier
AY12 (D and G)	78 in. (198.1 cm)	600, 700, and 800 Series Loader / Global Carrier
AY12 (D and G)	84 in. (213.4 cm)	600 and 700 Series Loader / Global Carrier



Rock Buckets

Clear your land of rocks while leaving the soil in place with a Rock Bucket. They sift out soil while picking up heavy rocks or large debris.

- Standard- or heavy-duty models available
- Compatible with wide range of John Deere loaders

Model	Working Width	Loader Series / Carrier
AR10 (H)	55 in. (139.7 cm)	300 and 400 Series Loader
AR10 (E)	66 in. (167.6 cm)	300, 400, and 500 Series Loader
AR10 (D, E, and G)	75 in. (190.5 cm)	300, 400, 500, 600, and 700 Series Loader / Global Carrier
AR12 (A, D, and G)	84 in. (213.4 cm)	600, 700, and 800 Series Loader / Global Carrier
AR12 (A, D, and G)	93 in. (236.2 cm) /	600, 700, and 800 Series Loader / Global Carrier



Free-Stall Scrapers

Maintain cleaner dairy pens with a handy Free-Stall Scraper. Clear out corners and hard-to-reach areas to make cleaning stalls less of a chore.

- Reversible and replaceable rubber edge
- Optional bolt-on back-drag
- Compatible with 300, 400, and 500 Series Loaders

Model	Working Width	Loader Series
AE11 (E)	60 in. (152.4 cm)	300, 400, and 500 Series Loader
AE11 (E)	72 in. (182.9 cm)	300, 400, and 500 Series Loader
AE11 (E)	84 in. (213.4 cm)	300, 400, and 500 Series Loader
AE11 (E)	96 in. (243.8 cm)	300, 400, and 500 Series Loader

Loader-Mount Implements

Make Loaders Work Harder

John Deere Loaders already provide great value, but they work harder than ever with innovative Loader Mount Tools and Accessories. A Frontier hydraulic power pack powers several loader-mount implements to remove snow, dirt, and debris, or take on other tough challenges.



Hydraulic Power Packs

The HP2025 and HP2134 Hydraulic Power Packs feature internal thermal switches for protecting the hydraulic system and optional oil coolers to regulate hydraulic oil temperature.

Model	Hydraulic Capacity	PTO HP
HP2025	16 GPM / 2,700 psi (60.57 LPM / 18,620 kPa)	25 - 35 hp (18.6 - 26.1 kW)
HP2134	20 GPM / 3,000 psi (75.71 LPM / 20,680 kPa)	35 - 65 hp (26.1 - 48.5 kW)



Loader-Mount Debris Blower

Remove dirt and debris quickly and easily with the Loader-Mount Debris Blower. It's a great tool for contractors and business owners looking to clear commercial property quickly and efficiently.

- Powered by 3-point hydraulic power pack
- 141 mph (227 kph) maximum air velocity
- 6,000 CFM (169.9 m³/min) maximum air flow
- Discharge outlet is adjustable from side to side

Model	Loader Series
BL2130	300 or 400 Series Loader



Loader-Mount Snowblowers

Power through deep snowdrifts with Loader-Mount Snowblowers. Front mounting provides greater visibility and reduces operator fatigue.

- Powered by 3-point hydraulic power pack
- Adjustable skid shoes
- Standard hydraulic chute rotation
- Compatible with current John Deere 300 or 400 Series Loaders
- Hydraulic chute deflector optional

Model	Working Width	Loader Series
SB2164	64 in. (162.6 cm)	300 Series Loader
SB2176	76 in. (193.0 cm)	400 Series Loader



Loader-Mount Rotary Brooms

Loader-Mount Rotary Brooms. Sweep off walk routes, driveways, parking lots, and other paved areas.

- Powered by 3-point hydraulic power pack
- 32 in. (81.3 cm) diameter brush
- Hydraulic left or right 23-degree angling
- Optional dust suppression system features 15-gallon (56.8 L) tank
- Optional gauge wheels

Model	Working Width	Loader Series
SW2160	60 in. (152.4 cm)	300 Series Loader
SW2172	72 in. (182.9 cm)	300 or 400 Series Loader
SW2184	84 in. (213.4 cm)	400 Series Loader

Material Handling Equipment (Loader Attachments)



Snow Push

The Snow Push does just what the name implies – push snow away from buildings, fences, and hard-to-reach areas quickly and easily.

- 6 to 10 ft. (1.8 to 3.1 m) working widths
- Welded skid shoes
- Up to 8.5 cu. ft. (2.6 m³) capacity
- Rubber or steel edges available on various models

Model	Working Width	Loader Series
AS10 (H)	72 in. (182.9 cm)	300 and 400 Series Loader
AS10 (H)	84 in. (213.4 cm)	300 and 400 Series Loader
AS10 (H)	96 in. (243.8 cm)	300 and 400 Series Loader
AS11 (E)	8 ft. (2.4 m)	300, 400, and 500 Series Loader
AS11 (E)	9 ft. (2.7 m)	300, 400, and 500 Series Loader
AS11 (E)	10 ft. (3.0 m)	300, 400, and 500 Series Loader



Front Blades

For small snow removal chores, Front Blades are a dependable solution. Curved blade edges roll snow rather than pushing it for smoother, easier moving.

- 72 to 84 in. (1.8 to 2.1 m) working widths
- Standard skid shoes
- Quick-attach capabilities

Model	Working Width	Loader Series / Carrier
AF11 (E)	72 in. (182.9 cm)	300, 400, and 500 Series Loader
AF11 (D, E, and G)	84 in. (213.4 cm)	300, 400, 500, 600, and 700 Series Loaders / Global Carrier
AF11 (D and G)	96 in. (243.8 cm)	600 and 700 Series Loader / Global Carrier
AF12 (D and G)	96 in. (243.8 cm)	600 and 700 Series Loader / Global Carrier
AF12 (D and G)	108 in. (274.3 cm)	600 and 700 Series Loader / Global Carrier
AF12 (D and G)	120 in. (304.8 cm)	600 and 700 Series Loader / Global Carrier



Large Square Bale Squeeze

If you handle lots of large square bales, Frontier's AB17K Large Square Bale Squeeze will leave the bales in good shape, even after being handled several times. It features two 96 inch arms that hydraulically squeeze the bale's sides.

- 110 in. (2.8 m) working width
- 4000 lb. (1814 kg) capacity
- Dual auxiliary hydraulic service

Model	Bale Handling Capacity	Loader Series / Carrier
AB17K	2 Large Square Bales	Cat. 2 Global Carrier

Government and Commercial Equipment



Working Performance. Durability. Value.



Box Blades - Hydraulic Scarifiers

Level uneven ground and simplify grading tasks with a durable Box Blade.

- Fixed or floating tailgate
- Replaceable shanks
- Equipped with Hydraulic Scarifiers
- Available in green or construction yellow
- iMatch or Quick-Hitch compatible

Model	Working Width	PTO HP	Hitch
BB4178	78 in. (198.1 cm)	90 hp (67.1 kW) maximum	Cat. 1 and 2
BB4184	84 in. (213.4 cm)	90 hp (67.1 kW) maximum	Cat. 1 and 2
BB4196	96 in. (243.8 cm)	90 hp (67.1 kW) maximum	Cat. 1 and 2



Box Scrapers

These heavy-duty scrapers stand up to even those really tough jobs. These Box Scrapers can smooth driveways, yards, and fields.

- Draw bar and single SCV compatibility
- Optional notched cutting edge for hard soil
- Optional rear attachments

Model	Working Width	PTO HP	Drawn
LL1372	6 ft. (1.8 m)	35 - 100 hp (26.1 - 74.6 kW)	Pull-Type / Clevis
LL1384	7 ft. (2.1 m)	35 - 125 hp (26.1 - 93.2 kW)	Pull-Type / Clevis
LL1396	8 ft. (2.5 m)	35 - 125 hp (26.1 - 93.2 kW)	Pull-Type / Clevis



Land Planes

Level driveways, fill potholes, or recondition gravel areas with an all-purpose Land Plane. Durable frame allows you to smooth over challenging terrain. Standard- or heavy-duty options available.

- Pull-type or 3-point-hitch-mounted models
- Two cutting edges promote ground leveling
- Adjustable skid shoes optional with LP Series
- iMatch and/or Quick-Hitch compatible

Model	Working Width	PTO HP	Hitch
LP1160	60 in. (152.4 cm)	18 - 50 hp (13.4 - 37.3 kW)	Cat. 1
LP1172	72 in. (182.9 cm)	18 - 50 hp (13.4 - 37.3 kW)	Cat. 1
LP1184	84 in. (213.4 cm)	22 - 75 hp (16.4 - 55.9 kW)	Cat. 1 and 2
LP1196	96 in. (243.8 cm)	22 - 75 hp (16.4 - 55.9 kW)	Cat. 1 and 2
LP1207	84 in. (213.4 cm)	35 - 75 hp (29.8 - 59.7 kW)	Cat. 1 and 2
LP1208	96 in. (243.8 cm)	50 - 95 hp (29.8 - 59.7 kW)	Cat. 1 and 2
LP1210	120 in. (304.8 cm)	50 - 105 hp (44.7 - 74.6 kW)	Cat. 2



Rear Blades

Sturdy Rear Blades quickly put gardening, landscaping, driveway, and ditch maintenance chores behind you.

- Hydraulic tilt, angle, and offset function available
- Adjustable blades for easy grading and leveling
- iMatch or Quick-Hitch compatible
- Hydraulic tilt, angle, and offset function available

Model	Duty / Working Width	PTO HP	Hitch
RB2307 ¹	Heavy / 84 in. (213.4 cm)	120 hp (89.5 kW) maximum	Cat. 2
RB2308 ¹	Heavy / 96 in. (243.8 cm)	120 hp (89.5 kW) maximum	Cat. 2
RB2309 ¹	Heavy / 108 in. (274.3 cm)	120 hp (89.5 kW) maximum	Cat. 2
RB2310 ¹	Heavy / 120 in. (304.8 cm)	120 hp (89.5 kW) maximum	Cat. 2

¹Reduce the hp requirement by 10 hp if the tractor has MFWD



Power Rakes

Cultivate, level, grade, or restore soil surfaces quickly and conveniently with a versatile, easy to use Power Rake.

- Carbide tooth roller
- Manually adjustable rollback barrier
- Hydraulically adjustable angle
- iMatch compatible

Model	Working Width	PTO HP	Hitch
PR1160	Hydraulic / 60 in. (152.4 cm)	18 - 35 hp (13.4 - 26.1 kW)	Cat. 1
PR1172	Hydraulic / 72 in. (182.9 cm)	30 - 40 hp (22.4 - 29.8 kW)	Cat. 1



Power Rake Seeder Attachments

You can level, till, and seed in one pass with the Power Rake Seeder Attachment, the ideal finishing tool.

- Attaches to Frontier PR1160 or PR1172 Power Rakes
- Standard roller basket ensures good seed to soil contact

Compatibility	Capacity	Working Width	Seed Rate
PR1160	3.75 bushel	60 in. (152.4 cm)	Adjustable
PR1172	4.5 bushel	72 in. (182.9 cm)	Adjustable



Sickle Bar Mowers

Sickle Bar Mowers combine performance and value. Mow up or down hillsides with a blade angle that can be adjusted from -45 degrees to +90 degrees.

- Operate cylinder stop from tractor seat
- Double-action cutting bar with hydraulic lifting cylinder
- iMatch compatible

Model	Working Width	PTO HP	Hitch
SB3106	5 ft. 9 in. (1.8 m)	25 - 50 hp (18.6 - 37.3 kW)	Cat. 1 and Cat. 2
SB3107	6 ft. 9 in. (2.1 m)	25 - 50 hp (18.6 - 37.3 kW)	Cat. 1 and Cat. 2
SB3108	7 ft. 8 in. (2.3 m)	25 - 50 hp (18.6 - 37.3 kW)	Cat. 1 and Cat. 2



Flex-Wing Grooming Mowers

Flex-Wing Grooming Mowers feature wider working widths to make quick work at sod farms, golf courses, and parks.

- 12 to 20 ft. (3.7 to 6.1 m) cutting widths
- 8-gauge steel plate deck
- Auto-engage transport latch

Model	Working Width	PTO HP	Hitch
FM1012	12 ft. (3.7 m)	30 - 80 hp (22.4 - 59.7 kW)	Pull-Type
FM1015	15 ft. (4.6 m)	35 - 80 hp (26.1 - 59.7 kW)	Pull-Type
FM1017	17 ft. (5.2 m)	40 - 80 hp (29.8 - 59.7 kW)	Pull-Type
FM2120R	20 ft. (6.1 m)	35 - 80 hp (26.1 - 59.7 kW)	Pull-Type



Government and Commercial Equipment



Grooming Mowers

Keep lawns, sporting fields, and golf courses looking their best with a smooth cutting Grooming Mower.

- 5 to 9 ft. (152.4 to about 279.4 cm) cutting widths
- Single- or dual-belt drive
- High blade speed for thorough cutting and uniform distribution
- Category 1 iMatch compatible with optional kit
- Rear discharge

Model	Working Width	PTO HP	Hitch
GM1060E	60 in. (152.4 cm)	15 - 40 hp (11.2 - 29.8 kW)	Cat. 1
GM1072E	72 in. (182.9 cm)	20 - 40 hp (14.9 - 29.8 kW)	Cat. 1
GM1084R	84 in. (213.4 cm)	25 - 40 hp (18.6 - 29.8 kW)	Cat. 1
GM1190R	90 in. (228.6 cm)	25 - 50 hp (18.6 - 37.3 kW)	Cat. 1
GM2190	90 in. (228.6 cm)	30 - 70 hp (22.4 - 52.2 kW)	Cat. 1
GM2109	110 in. (279.4 cm)	30 - 70 hp (22.4 - 52.2 kW)	Cat. 1



Core Aerators

Keep your lawn, park, athletic field, or golf course healthy with a Core Aerator. These tools help reduce soil compaction, and promote air, water, and nutrient circulation.

- Reduces compaction to increase turf vitality
- Two bronze bushings per rotor for wear resistance
- Penetrates to depth of 4.5 in. (11.4 cm)
- iMatch compatible

Model	Duty / Working Width	PTO HP	Hitch
CA2060	Economy / 60 in. (152.4 cm)	25 - 70 hp (18.6 - 52.2 kW)	Cat. 1 and 2
CA2072	Standard / 72 in. (182.9 cm)	25 - 70 hp (18.6 - 52.2 kW)	Cat. 1 and 2



Landscape Rakes

From debris and brush removal to surface leveling and final seed preparation, the Landscape Rake makes cleaning up and grooming landscapes as simple as raking leaves.

- Rugged tubular steel frame
- Long-lasting steel spring tines
- iMatch compatible

Model	Duty / Working Width	PTO HP	Hitch
LR2172	Medium / 72 in. (182.9 cm)	25 - 55 hp (18.6 - 41.0 kW)	Cat. 1
LR2184	Medium / 84 in. (213.4 cm)	23 - 55 hp (17.2 - 41.0 kW)	Cat. 1
LR2196	Medium / 96 in. (243.8 cm)	27 - 55 hp (20.1 - 41.0 kW)	Cat. 1



Loader Attachments

Frontier Loader Attachments are built to handle your heavy-duty tasks. Lift, stack, move, push, load, or unload. Includes Pallet Forks, Rock Buckets, Root Grapples, Front Blades, and other durable tools.

- Compatible with a wide range of John Deere loaders
- Attachments for diverse, seasonal jobs

Model	Description / Working Width	Loader Series / Carrier*
AP12	Pallet Fork Fixed	200, 300, 400, 500, 600, 700, and 800 Series Loader / Global and Cat. 2 Global
AP13	Pallet Fork Floating	200, 500, 600, 700, Global
AY11	4 - in - 1 Bucket / 60 - 72 in. (152.4 - 182.9 cm)	300, 400, and 500 (AY11E only) Series Loader
AD11	Debris Grapple / 60 - 72 in. (152.4 - 182.9 cm)	300, 400, and 500 Series Loader
AV20	Root Grapple / 60 - 77 in. (152.4 - 195.6 cm)	300, 400, 500, 600, and 700 Series Loader Global depending on the model
AF11	Front Blade / 72 - 96 in. (182.9 - 243.8 cm)	300, 400, 500, 600, and 700 Series Loader Global depending on the model
AS10	Snow Push Blade / 72 - 96 in. (182.9 - 243.8 cm)	300 and 400 Series Loader
AR10	Rock Bucket / 55 in. - 75 in. (139.7 - 190.5 cm).	300, 400, 500, 600, and 700 Series Loader depending on the model / Global depending on the model

*See Material Handling Equipment (Loader Attachments) section for a complete list and specific details



End-Wheel Grain Drills

End-Wheel Grain Drills offer a popularly priced seeding solution for conventional tillage applications.

- 8 to 13 ft. (2.5 to 4.0 m) working widths
- Drill cereal grains, legumes, and forage crops
- Standard hydraulic lift cylinder raises and lowers the openers
- Optional combination seed/fertilizer box available

Model	Working Width	PTO HP	Hitch
BD1108	8 ft. (2.4 m) Wide, 6 & 7.5 in. (15 & 19 cm) row spacings	42 hp (31.3 kW) minimum	Pull-Type
BD1110	10 ft. 6 in. (3.2 m) Wide, 6 & 7.5 in. (15 & 19 cm) row spacings	42 hp (31.3 kW) minimum	Pull-Type
BD1113	13 ft. (4.0 m) Wide, 6 & 7.5 in. (15 & 19 cm) row spacings	42 hp (31.3 kW) minimum	Pull-Type



Conservation Seeders

Renovate pastures or landscape roadsides with a Conservation Seeder. It makes quick work of any type of seeding, from native prairie grasses to large legumes.

- Work at speeds up to 7 mph (11.2 kph)
- Full-width coverage to prevent "pinstripe" effect
- Reinforced nylon or cast-iron rear cultipacker rings
- Includes various combinations of standard large-grain, native grass, small-seed legume, and stainless-steel fertilizer boxes
- iMatch and Quick-Coupler compatible (iMatch compatible CS1360 only)

Model	Working Width	PTO HP	Hitch
CS1360	5 ft. (1.5 m)	30 hp (22.4 kW) minimum	Cat. 1 and 2
CS1384	7 ft. (2.1 m)	50 hp (37.3 kW) minimum	Cat. 1 and 2



Overseeders

Get the lush, green turf you expect with a Frontier Overseeder. This implement provides exceptional placement of grass seed without reworking your lawn.

- High-precision metering seed cups
- Flow-adjustment chart and lever
- iMatch compatible

Model	Drive	Working Width	PTO HP	Hitch
TR2058	PTO driven	58 in. (147.3 cm)	25 - 50 hp (18.6 - 37.3 kW)	Cat. 1



3-Point Debris Blower

Remove dirt and light debris with the 3-Point Debris Blower. Ideal for sidewalks, driveways, lawns, and golf courses.

- 141 mph (227 kph) maximum air velocity
- 6,000 CFM (169.9 m³/min) maximum air flow
- Discharge outlet is adjustable from side to side

Model	PTO HP	Hitch
BL1130	25 hp (18.6 kW) minimum	Cat. 1 & 2

Government and Commercial Equipment



Pendular Spreaders

Spread material of different weights, sizes, and textures more accurately with Frontier Pendular Spreaders.

- Broad range of sizes, from 12.4 to 42.4 cu. ft. (3.8 to 12.9 m³)
- Durable reinforced fiberglass hopper
- Optional hydraulic control and sand/salt spout

Model	Working Width	PTO HP
SS1079P	47 ft. (14.3 m) swath	20 - 60 hp (14.9 - 44.7 kW)
SS1116P	47 ft. (14.3 m) swath	20 - 60 hp (14.9 - 44.7 kW)
SS1180P	47 ft. (14.3 m) swath	20 - 60 hp (14.9 - 44.7 kW)
SS1220P	47 ft. (14.3 m) swath	20 - 60 hp (14.9 - 44.7 kW)



Loader-Mount Snowblowers

Power through deep snowdrifts with Loader-Mount Snowblowers. Front mounting provides greater visibility and reduces operator fatigue.

- Powered by 3-point hydraulic power pack
- Adjustable skid shoes
- Standard hydraulic chute rotation
- Compatible with current John Deere 300 or 400 Series Loaders
- Optional hydraulic chute deflector

Model	Working Width	Loader
SB2164	64 in. (162.6 cm)	300 Series Loader
SB2176	76 in. (193.0 cm)	400 Series Loader

Hydraulic Power Packs

Model	Hydraulic Capacity	PTO HP
HP2025	16 GPM / 2,700 psi (60.57 LPM / 18,620 kPa)	25 - 35 hp (18.6 - 26.1 kW)
HP2134	20 GPM / 3,000 psi (75.71 LPM / 20,680 kPa)	35 - 65 hp (26.1 - 48.5 kW)



Broadcast Spreaders

Versatile and easy-to-use, Broadcast Spreaders distribute seed, lime, or fertilizer up to 49 ft. (14.9 m) wide.

- Non-corrosive polyethylene seamless hopper (SS20 Series only)
- Optional weather cover and remote gate control

Model	Working Width	PTO HP
SS2036B	23 ft. (7.0 m) swath	16 - 45 hp (11.9 - 33.6 kW)
SS2067B	46 ft. (14.0 m) swath	16 - 55 hp (11.9 - 41.0 kW)
SS3067B	49 ft. (14.9 m) swath	20 - 60 hp (14.9 - 44.7 kW)



3-Point Snowblowers

Move snow out of the way so you can get on with your work with a powerful 3-Point Snow Blower. These blowers are the ideal size for large-property and commercial operations, clearing yards, parking lots, driveways, or sidewalks.

- Adjustable skid shoes
- Standard manual or optional hydraulic chute deflector
- Welded- or bolted-on reversible cutting edges
- Rotating drum equipped on SB13R Series
- iMatch and/or Quick-Coupler compatible¹

Model	Working Width	PTO HP	Hitch
SB1274	74 in. (188.0 cm)	30 - 80 hp (22.4 - 59.7 kW)	Cat. 1 and 2
SB1280	80 in. (203.2 cm)	30 - 80 hp (22.4 - 59.7 kW)	Cat. 1 and 2
SB1388	88 in. (223.5 cm)	55 - 95 hp (41.0 - 70.8 kW)	Cat. 2
SB1388R	88 in. (223.5 cm)	55 - 95 hp (41.0 - 70.8 kW)	Cat. 2
SB1392	92 in. (233.7 cm)	75 - 125 hp (55.9 - 93.2 kW)	Cat. 2
SB1392R	92 in. (233.7 cm)	75 - 125 hp (55.9 - 93.2 kW)	Cat. 2
SB1308	98 in. (248.9 cm)	100 - 150 hp (74.6 - 111.9 kW)	Cat. 2 and 3
SB1308R	98 in. (248.9 cm)	100 - 150 hp (74.6 - 111.9 kW)	Cat. 2 and 3
SB1309R	104 in. (264.2 cm)	100 - 150 hp (74.6 - 111.9 kW)	Cat. 2 and 3

¹Quick-Coupler optional on SB13 Series. Requires additional kit.



Loader-Mount Rotary Brooms

Commercial customers will find life a little easier with the time-saving Loader-Mount Rotary Brooms. Sweep off walkways, driveways, parking lots, and other paved areas.

- Powered by 3-pt. hydraulic power pack
- 32 in.x (81.3 cm) diameter brush
- Hydraulic left or right 23-degree angling
- Optional dust suppression system features 15-gallon (56.8 l) tank
- Optional gauge wheels

Model	Working Width	Loader
SW2160	60 in. (152.4 cm)	300 Series Loader
SW2172	72 in. (182.9 cm)	300 or 400 Series Loader
SW2184	84 in. (213.4 cm)	400 Series Loader

Hydraulic Power Packs

Model	Hydraulic Capacity	PTO HP	Hitch
HP2025	16 GPM / 2,700 psi (60.57 LPM / 18,620 kPa)	25 - 35 hp (18.6 - 26.1 kW)	Cat. 1
HP2134	20 GPM / 3,000 psi (75.71 LPM / 20,680 kPa)	35 - 65 hp (26.1 – 48.5 kW)	Cat. 1 and 2

Loader-Mount Debris Blower

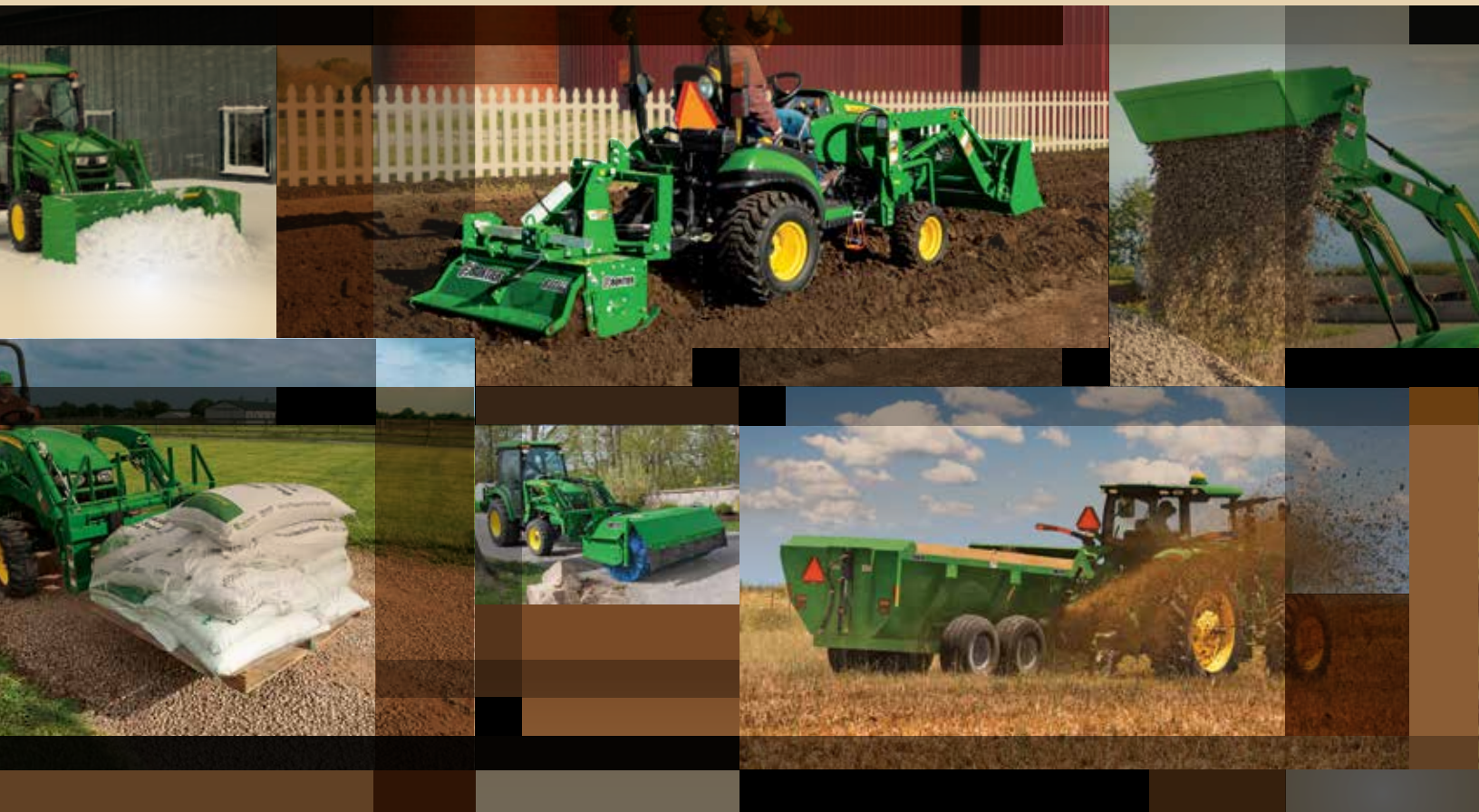
Get rid of dirt and heavy debris quickly and easily with the Loader-Mount Debris Blower. A must-have for contractors and business owners looking to clear commercial property.

- Powered by 3-pt. hydraulic power pack
- 141 mph (227 kph) maximum air velocity
- 6,000 CFM (169.9 m³/min) maximum air flow
- Discharge outlet is adjustable from side to side

Model	Loader
BL2130	300 or 400 Series Loader

Hydraulic Power Packs

Model	Hydraulic Capacity	PTO HP	Hitch
HP2025	16 GPM / 2,700 psi (60.57 LPM / 18,620 kPa)	25 - 35 hp (18.6 - 26.1 kW)	Cat. 1
HP2134	20 GPM / 3,000 psi (75.71 LPM / 20,680 kPa)	35 - 65 hp (26.1 – 48.5 kW)	Cat. 1 and 2



FRONTIER

U.S.A www.BuyFrontier.com ■ Canada www.BuyFrontier.ca
Available exclusively at your John Deere dealership

This literature has been compiled for worldwide circulation. While general information, pictures and descriptions are provided, some illustrations and text may include finance, credit, insurance, and product options/accessories available at an additional cost that may not be available in all regions. CONTACT YOUR LOCAL JOHN DEERE DEALER FOR DETAILS. The iMatch Quick-Hitch does not work with all tractor series or with all implements. See your John Deere dealer to determine which tractors and implements are compatible with the iMatch. Frontier Equipment reserves the right to change specifications and design of products described in this literature without notice. John Deere, the leaping deer symbol, and John Deere's green and yellow trade dress are the trademarks of Deere & Company. Copyright 2016 , Frontier Equipment.

